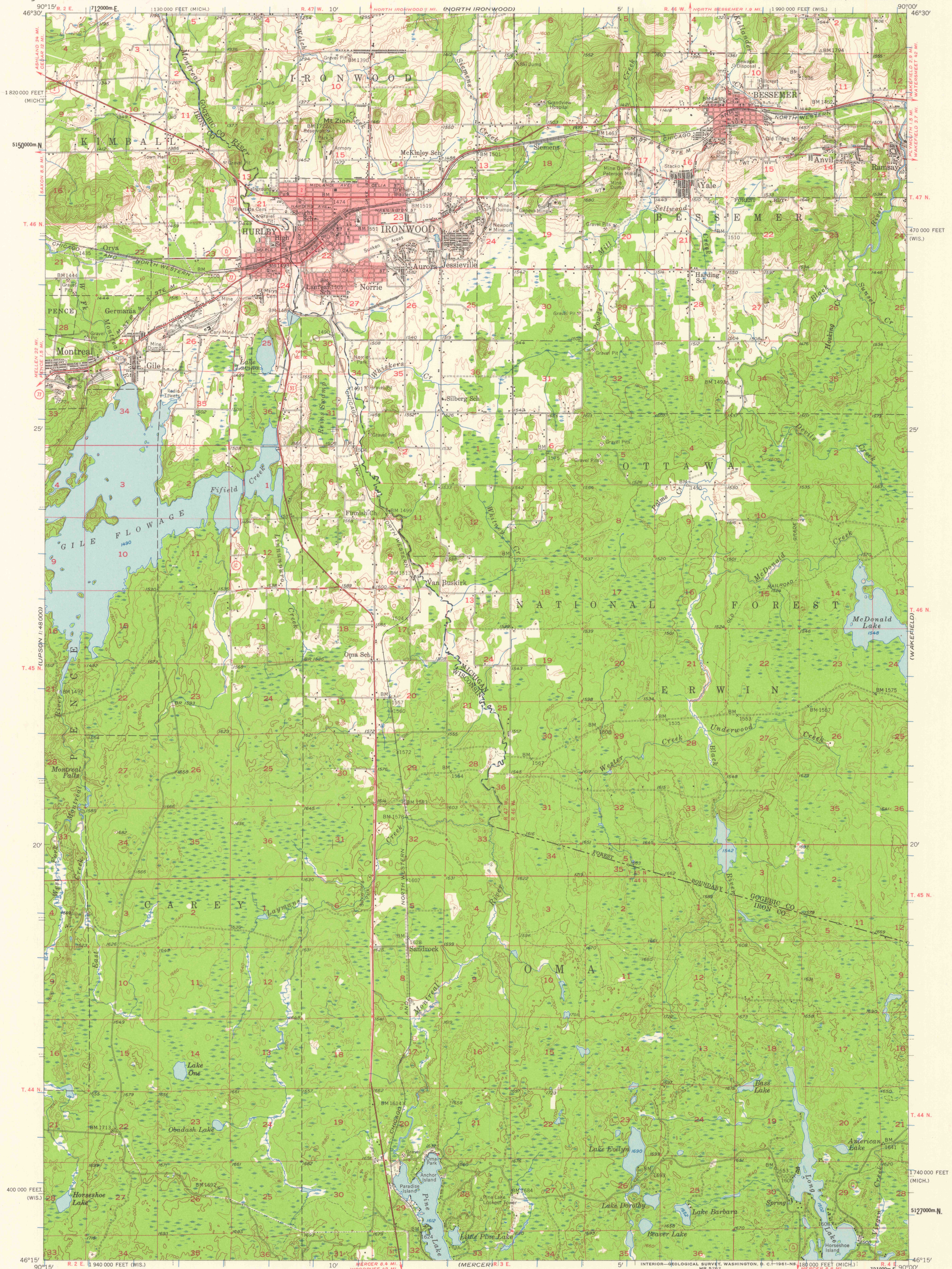


UNITED STATES  
DEPARTMENT OF THE INTERIOR  
GEOLOGICAL SURVEY

IRONWOOD QUADRANGLE  
WISCONSIN-MICHIGAN  
15 MINUTE SERIES (TOPOGRAPHIC)



Mapped, edited, and published by the Geological Survey

Control by USGS and USC&GS

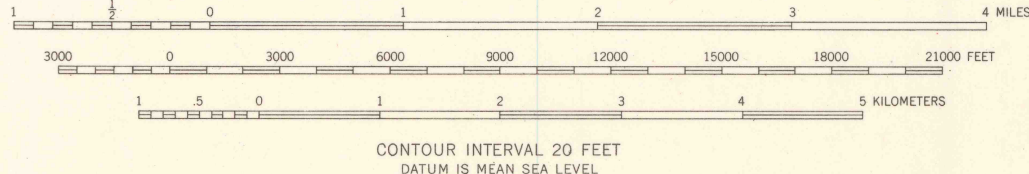
Topography from aerial photographs by Kelsh plotter

Aerial photographs taken 1951. Field check 1955

Polyconic projection. 1927 North American datum  
10,000-foot grid based on Wisconsin coordinate system,  
north zone, and Michigan coordinate system, west zone  
1000-meter Universal Transverse Mercator grid ticks,  
zone 15, shown in blue

Red tint indicates areas in which only  
landmark buildings are shown

TRUE NORTH  
MAGNETIC NORTH  
APPROXIMATE MEAN  
DECLINATION, 1955



ROAD CLASSIFICATION  
Heavy-duty ——— Light-duty ———  
Medium-duty ——— Unimproved dirt ———  
U.S. Route ——— State Route ———



The north half of this area also covered  
by 1:24,000 scale maps of Bessemer and  
Ironwood, 7.5 minute quadrangles, surveyed 1955.  
IRONWOOD, WIS.-MICH.  
N 4615—W 9000/15

1955

THIS MAP COMPLIES WITH NATIONAL MAP ACCURACY STANDARDS  
FOR SALE BY U. S. GEOLOGICAL SURVEY, WASHINGTON 25, D. C.  
AND BY THE WISCONSIN GEOLOGICAL AND NATURAL HISTORY SURVEY, MADISON 6, WISCONSIN  
A FOLDER DESCRIBING TOPOGRAPHIC MAPS AND SYMBOLS IS AVAILABLE ON REQUEST

RT-F FILE COPY