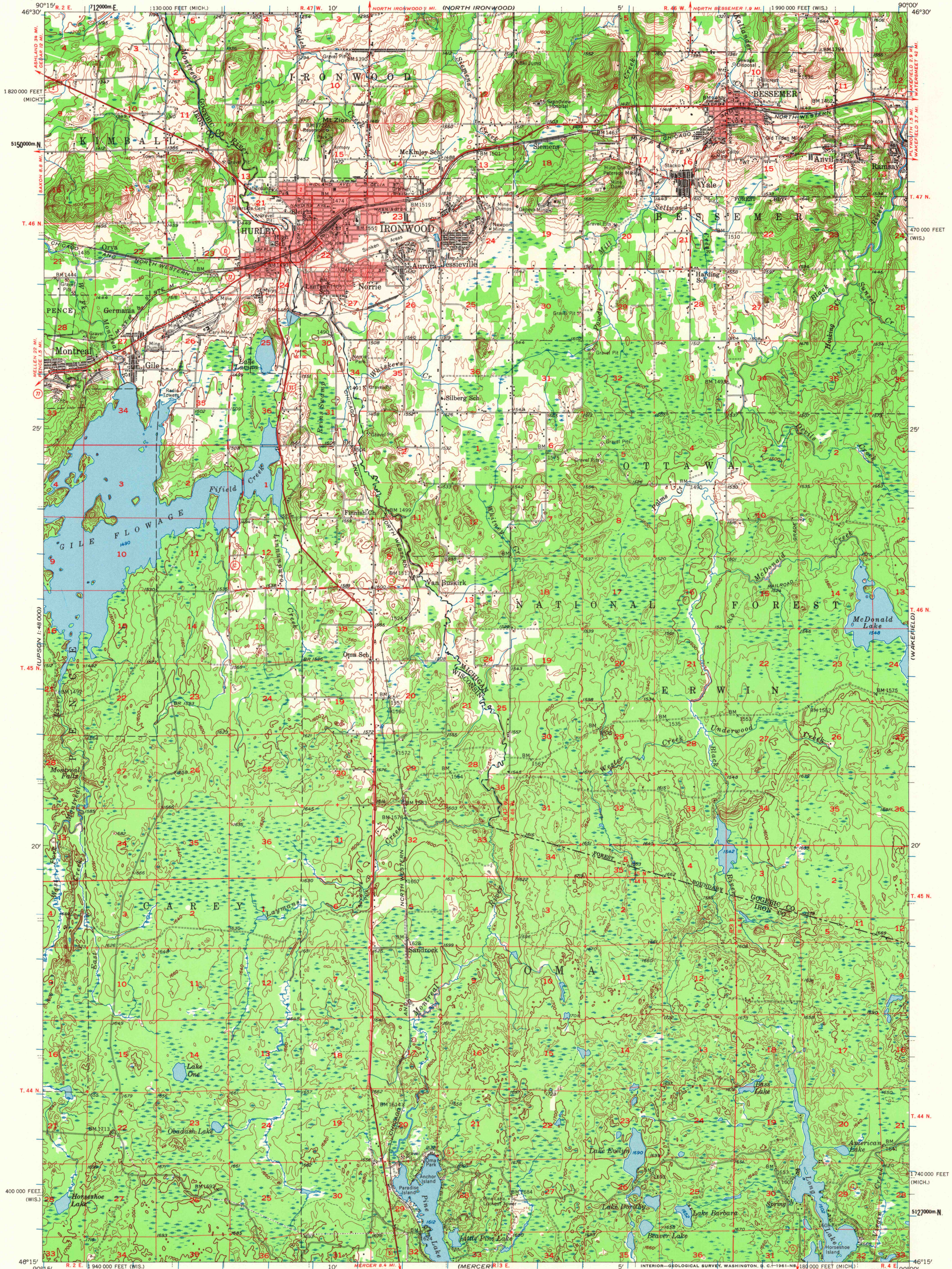
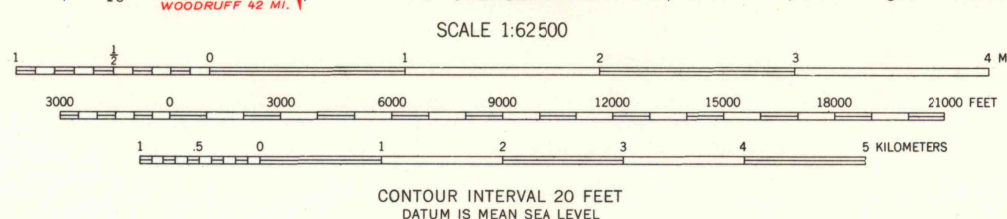


UNITED STATES  
DEPARTMENT OF THE INTERIOR  
GEOLOGICAL SURVEY

IRONWOOD QUADRANGLE  
WISCONSIN-MICHIGAN  
15 MINUTE SERIES (TOPOGRAPHIC)



Mapped, edited, and published by the Geological Survey  
Control by USGS and USC&GS  
Topography from aerial photographs by Kelsh plotter  
Aerial photographs taken 1951. Field check 1955  
Polyconic projection. 1927 North American datum  
10,000-foot grids based on Wisconsin coordinate system,  
north zone, and Michigan coordinate system, west zone  
1000-meter Universal Transverse Mercator grid ticks,  
zone 15, shown in blue  
Red tint indicates areas in which only  
landmark buildings are shown



ROAD CLASSIFICATION  
Heavy-duty ——— Light-duty ———  
Medium-duty ——— Unimproved dirt ———  
U.S. Route ——— State Route ———

The north half of this area also covered  
by 1:24,000 scale maps of Bessemer and  
Ironwood, 7.5 minute quadrangles, surveyed 1955.  
IRONWOOD, WIS.-MICH.  
N 4615-W 9000/15

1955

USCS  
Historical File  
Topographic Division

JUN 05 1974

1690