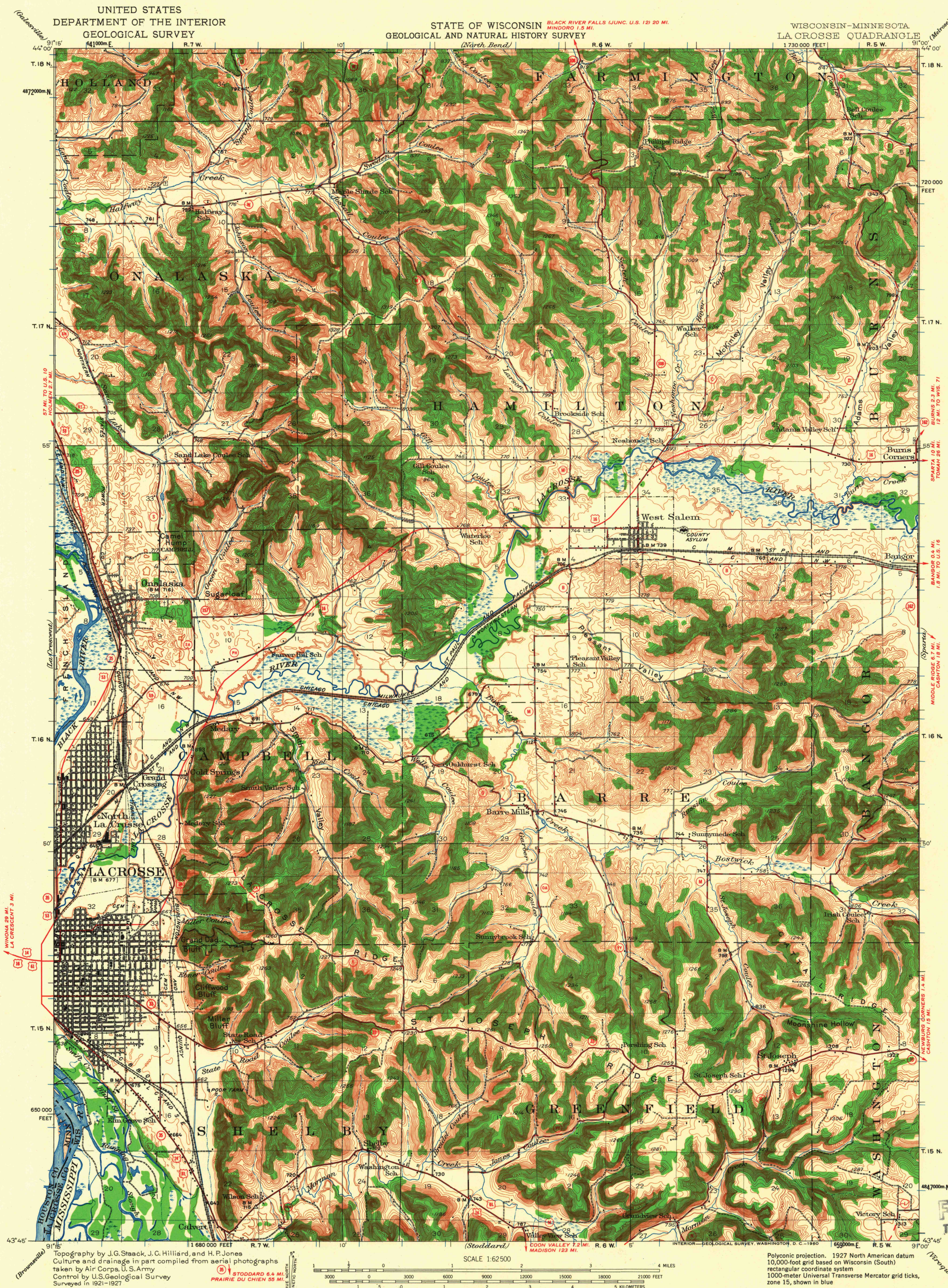


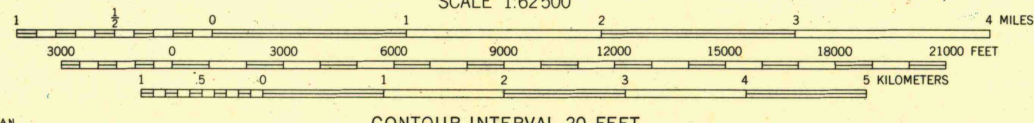
UNITED STATES
DEPARTMENT OF THE INTERIOR
GEOLOGICAL SURVEY

STATE OF WISCONSIN
GEOLOGICAL AND NATURAL HISTORY SURVEY

WISCONSIN-MINNESOTA
LA CROSSE QUADRANGLE



Topography by J.G. Staack, J.C. Hilliard, and H.P. Jones
Culture and drainage in part compiled from aerial photographs
taken by Air Corps, U.S. Army
Control by U.S. Geological Survey
Surveyed in 1921-1927



Polyconic projection. 1927 North American datum
10,000-foot grid based on Wisconsin (South)
rectangular coordinate system
1000-meter Universal Transverse Mercator grid ticks,
zone 15, shown in blue

ROAD CLASSIFICATION
Heavy-duty ——— Light-duty ———
Medium-duty ——— Unimproved dirt ———
U.S. Route ——— State Route ———

APPROXIMATE MEAN
DECLINATION, 1927

FOR SALE BY U.S. GEOLOGICAL SURVEY, DENVER 25, COLORADO OR WASHINGTON 25, D. C.
AND BY THE WISCONSIN GEOLOGICAL AND NATURAL HISTORY SURVEY, MADISON 6, WISCONSIN
A FOLDER DESCRIBING TOPOGRAPHIC MAPS AND SYMBOLS IS AVAILABLE ON REQUEST

LA CROSSE, WIS.-MINN.
N 4345-W 9100/15

U.S.G.S.
Historical File
Topographic Division

OCT 24 1960

1470