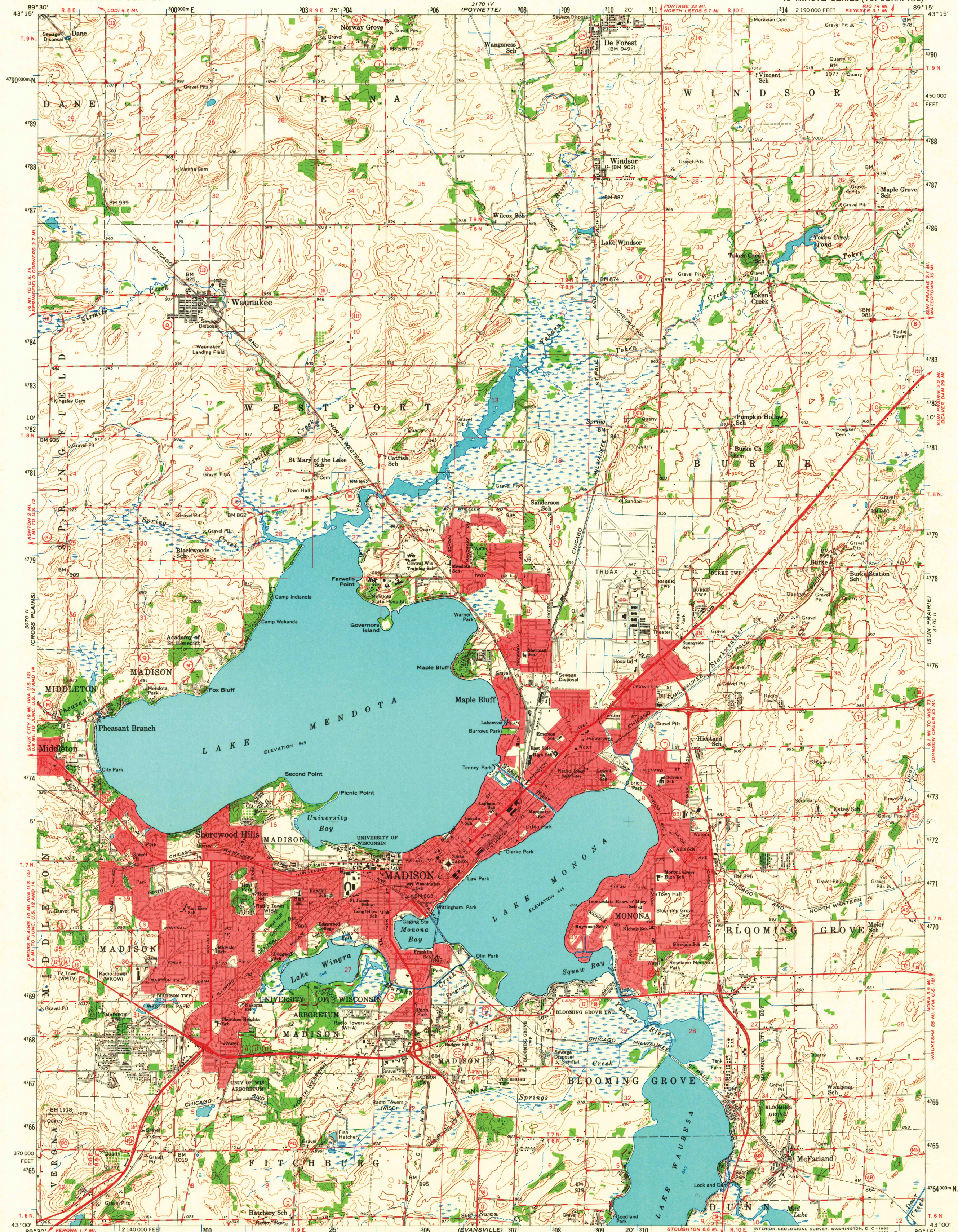


UNITED STATES
DEPARTMENT OF THE INTERIOR
GEOLOGICAL SURVEY

MADISON QUADRANGLE
WISCONSIN-DANE CO.
15 MINUTE SERIES (TOPOGRAPHIC)



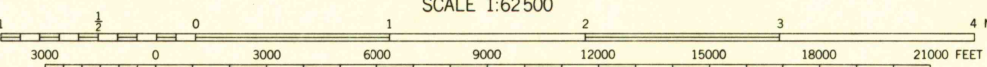
Mapped, edited, and published by the Geological Survey

Control by USGS and USC&GS

Compiled in 1960 from 1:24 000-scale maps of De Forest, Waunakee, Madison West, and Madison East 7.5 minute quadrangles, surveyed 1959
Topography from aerial photographs by photogrammetric methods. Aerial photographs taken 1957

Polyconic projection. 1927 North American datum
10,000-foot grid based on Wisconsin coordinate system, south zone
1000-meter Universal Transverse Mercator grid ticks, zone 16, shown in blue

Red tint indicates areas in which only landmark buildings are shown



CONTOUR INTERVAL 20 FEET
DATUM IS MEAN SEA LEVEL

THIS MAP COMPLIES WITH NATIONAL MAP ACCURACY STANDARDS
FOR SALE BY U. S. GEOLOGICAL SURVEY, WASHINGTON 25, D. C.
AND BY THE WISCONSIN GEOLOGICAL AND NATURAL HISTORY SURVEY, MADISON 6, WISCONSIN
A FOLDER DESCRIBING TOPOGRAPHIC MAPS AND SYMBOLS IS AVAILABLE ON REQUEST

ROAD CLASSIFICATION

- Heavy-duty
- Medium-duty
- Light-duty
- Unimproved dirt
- U. S. Route
- State Route

This area also covered by 1:24 000-scale maps of De Forest, Waunakee, Madison West, and Madison East 7.5 minute quadrangles, surveyed 1959



QUADRANGLE LOCATION

U.S.G.S.

MADISON, WIS.
N4300-W8915/15

1959

FILE COPY
TOPOGRAPHIC DIVISION

AMS 3170 III-SERIES V761

MAR 22 1965

6995