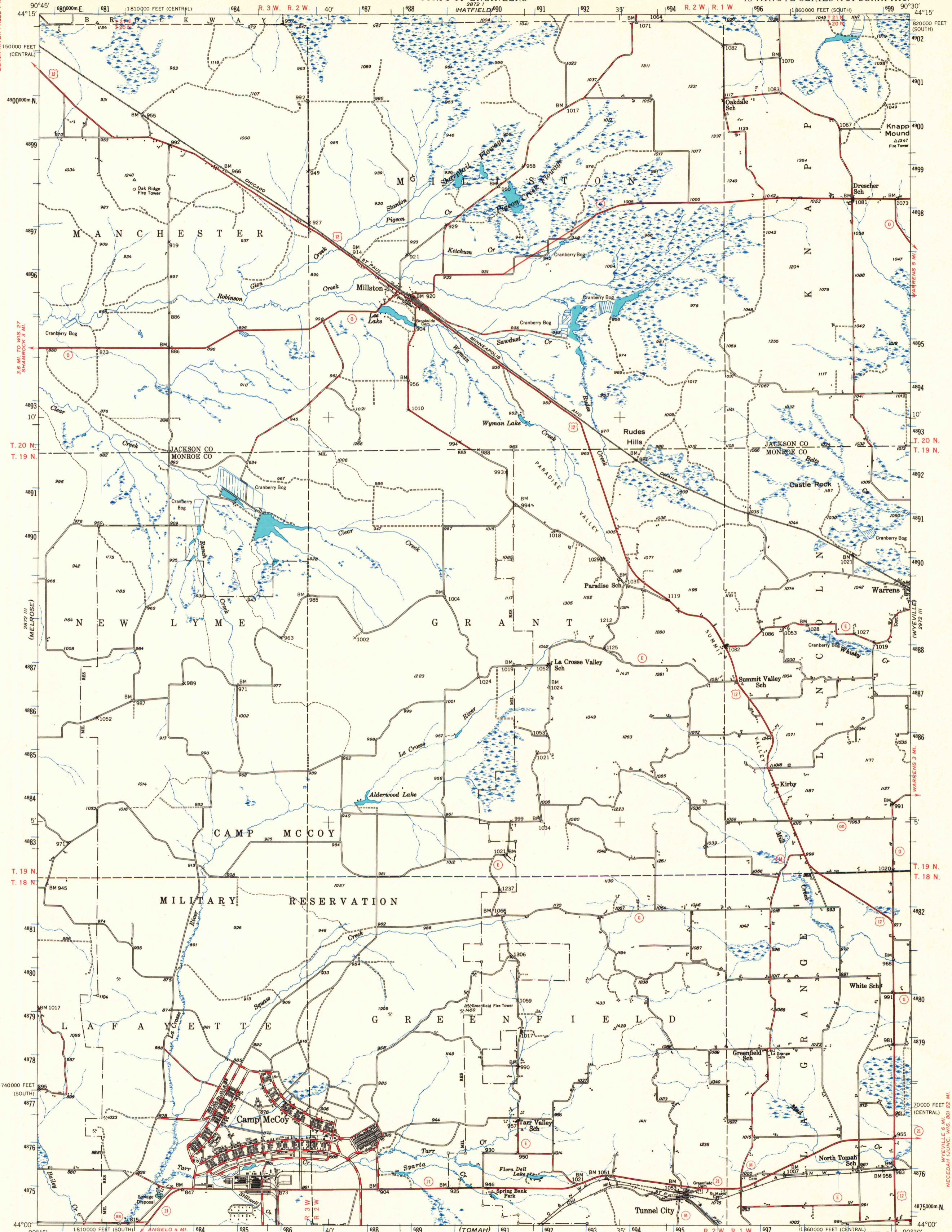


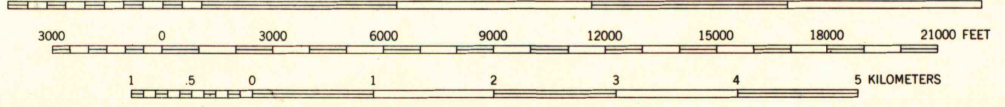
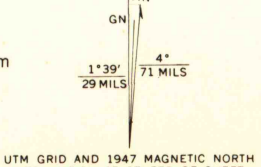
BLACK RIVER FALLS

CITY POINT



Mapped, edited, and published by the Geological Survey
Control by USGS, USC&GS, and USED

Topography from aerial photographs by multiplex methods
Aerial photographs taken 1946. Field check 1947.
Transverse Mercator projection. 1927 North American datum
10000-foot grids based on Wisconsin coordinate system,
central and south zones
1000-meter Universal Transverse Mercator grid ticks,
zone 15, shown in blue



CONTOUR INTERVAL 20 FEET
DASHED LINES REPRESENT HALF-INTERVAL CONTOURS
DATUM IS MEAN SEA LEVEL

ROAD CLASSIFICATION
Heavy-duty ——— Light-duty
Medium-duty ——— Unimproved dirt
U.S. Route ——— State Route



MILLSTON, WIS.
N4400-W9030/15

A.H. ROBINSON
MAP LIBRARY
NOV 25 1997
University of Wisconsin
Madison

SPECIAL PRINTING
Contours and woodland symbols omitted

1947
Copy
1-2