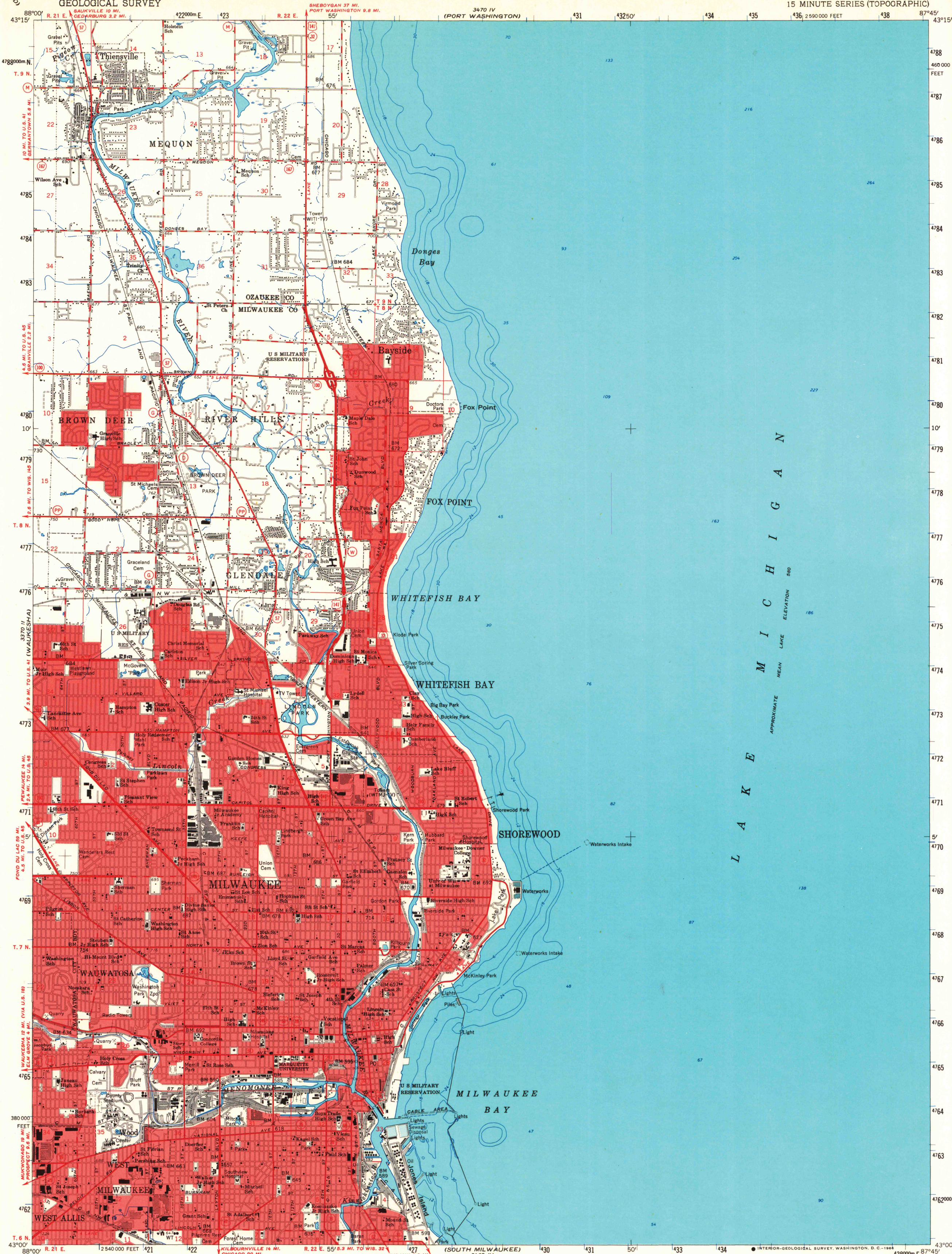


(WEST BEND)

UNITED STATES  
DEPARTMENT OF THE INTERIOR  
GEOLOGICAL SURVEY

MILWAUKEE QUADRANGLE  
WISCONSIN  
15 MINUTE SERIES (TOPOGRAPHIC)



Mapped, edited, and published by the Geological Survey

Control by USGS, USC&GS, and City of Milwaukee

Compiled in 1959 from 1:24,000-scale maps of Thiensville

and Milwaukee 7.5 minute quadrangles, surveyed 1958

Topography from aerial photographs by photogrammetric methods

Aerial photographs taken 1954-1955

Hydrography compiled from U.S. Lake Survey charts

74 and 743 (1957)

Polyconic projection. 1927 North American datum

10,000-foot grid based on Wisconsin coordinate system, south zone

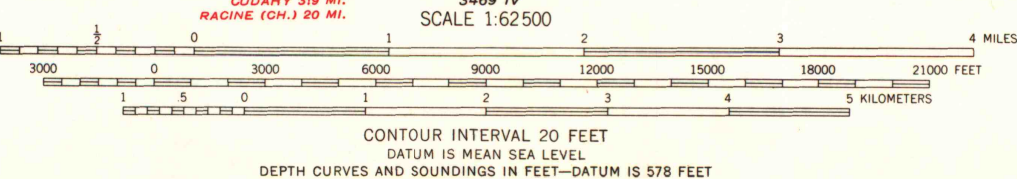
1000-meter Universal Transverse Mercator grid ticks,

zone 16, shown in blue

Red tint indicates areas in which only

landmark buildings are shown

UTM GRID AND 1958 MAGNETIC NORTH  
DECLINATION AT CENTER OF SHEET



THIS MAP COMPLIES WITH NATIONAL MAP ACCURACY STANDARDS  
FOR SALE BY U.S. GEOLOGICAL SURVEY, WASHINGTON, D. C. 20242,  
AND BY THE WISCONSIN GEOLOGICAL AND NATURAL HISTORY SURVEY, MADISON, WISCONSIN  
A FOLDER DESCRIBING TOPOGRAPHIC MAPS AND SYMBOLS IS AVAILABLE ON REQUEST



ROAD CLASSIFICATION  
Heavy-duty ——— Light-duty ———  
Medium-duty ——— Unimproved dirt ———  
U.S. Route ——— State Route ———

The W 1/2 of this area also covered by 1:24,000-scale  
maps of the Thiensville and Milwaukee 7.5 minute  
quadrangles, surveyed 1958

MILWAUKEE, WIS.

N 4300—W 8745/15

1958

AMS 3470 III—SERIES V761

SPECIAL PRINTING  
Contours and woodland symbols omitted

A.H. ROBINSON  
MAP LIBRARY

NOV 25 1957

University of Wisconsin  
Madison

1958  
Copy  
1-2

3-223