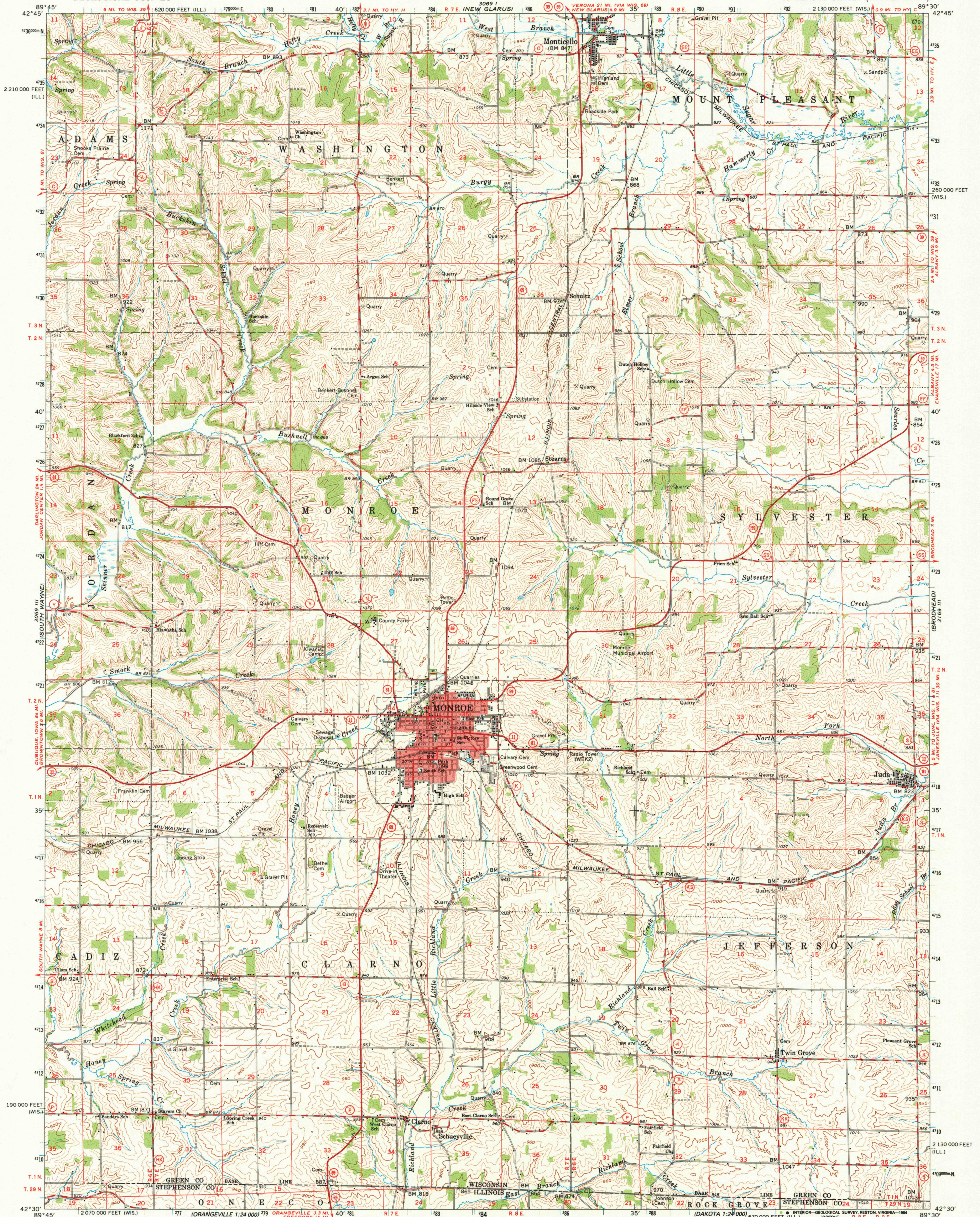


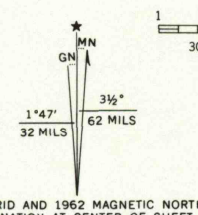
UNITED STATES
DEPARTMENT OF THE INTERIOR
GEOLOGICAL SURVEY

STATE OF WISCONSIN

MONROE QUADRANGLE
WISCONSIN-ILLINOIS
15 MINUTE SERIES (TOPOGRAPHIC)



Maped, edited, and published by the Geological Survey
in cooperation with State of Wisconsin agencies
Control by USGS and USC&GS
Topography by photogrammetric methods from aerial
photographs taken 1961. Field checked 1962
Polyconic projection. 1927 North American datum
10,000-foot grid based on Wisconsin coordinate system, south zone
and Illinois coordinate system, west zone
1000-meter Universal Transverse Mercator grid ticks,
zone 16, shown in blue
To place on the predicted North American Datum 1983,
move the projection lines 4 meters north and 9 meters east
Red tint indicates areas in which only landmark buildings are shown



SCALE 1:62,500
CONTOUR INTERVAL 20 FEET
NATIONAL GEODETIC VERTICAL DATUM OF 1929

ROAD CLASSIFICATION
Heavy-duty ——— Light-duty ———
Medium-duty ——— Unimproved dirt ———
State Route ———



THIS MAP COMPLIES WITH MAP ACCURACY STANDARDS
FOR SALE BY U.S. GEOLOGICAL SURVEY, RESTON, VIRGINIA 22092
WISCONSIN GEOLOGICAL AND NATURAL HISTORY SURVEY, MADISON, WISCONSIN 53706
AND ILLINOIS GEOLOGICAL SURVEY, CHAMPAIGN, ILLINOIS 61820
A FOLDER DESCRIBING TOPOGRAPHIC MAPS AND SYMBOLS IS AVAILABLE ON REQUEST

This area also covered by 7.5-minute, 1:24,000-scale
maps: Monticello 1962, Monroe NW 1962, Monroe 1962,
and Jude 1962
MONROE, WIS.-ILL.
N4230-W8930/15
1962
AMS 3069 II—SERIES V761

RETURN TO:
USGS AND HISTORICAL MAP ARCHIVES