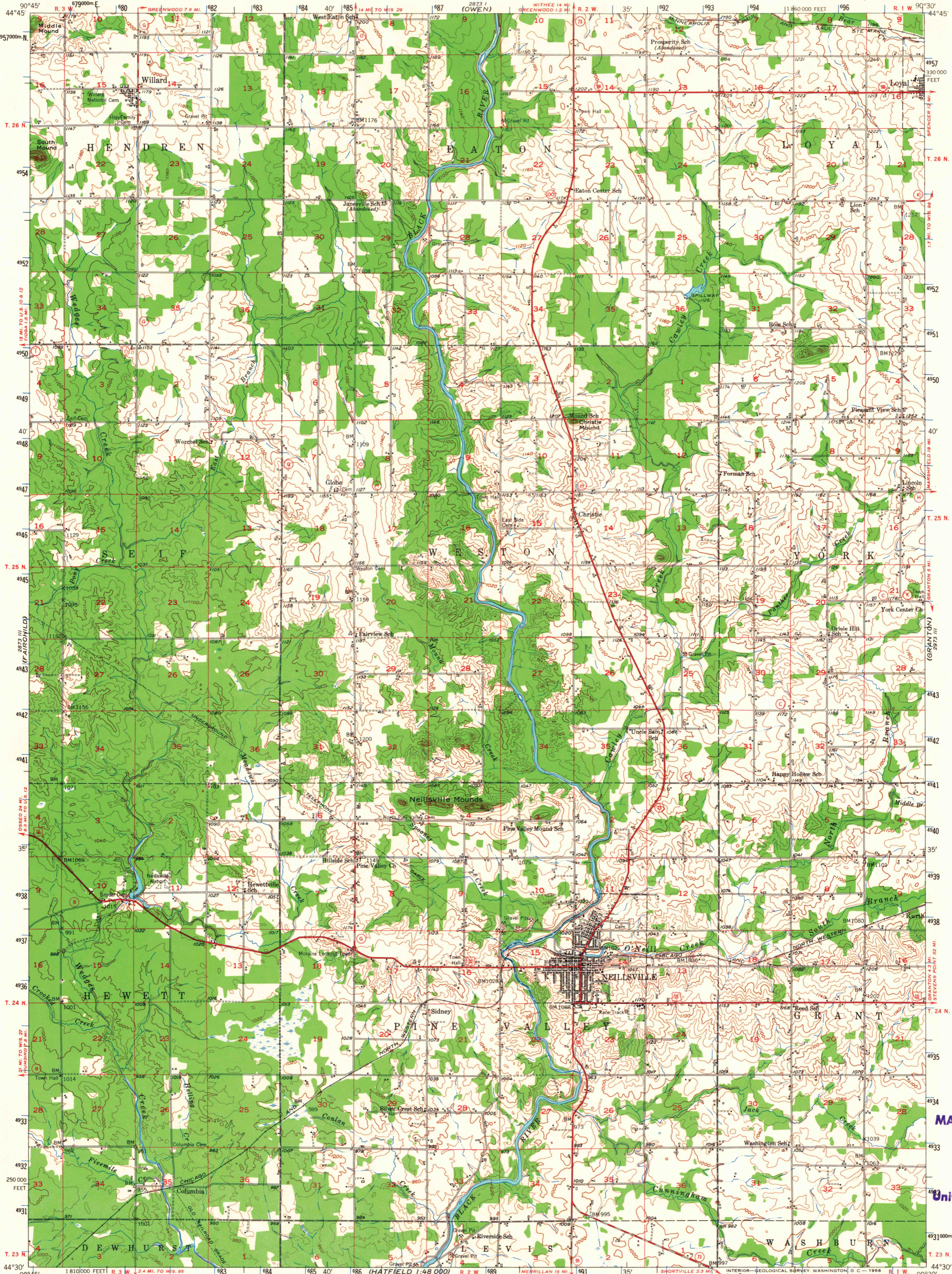
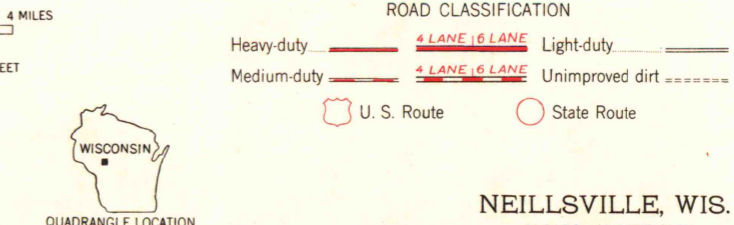
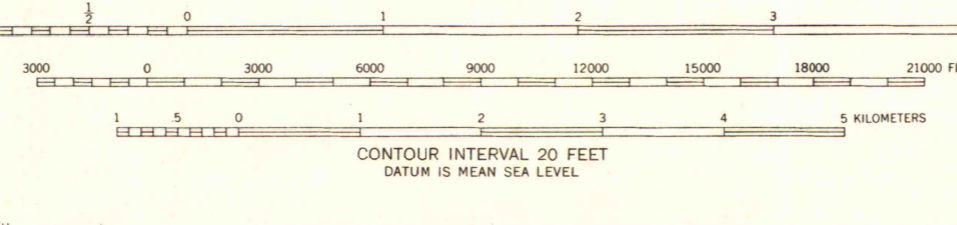
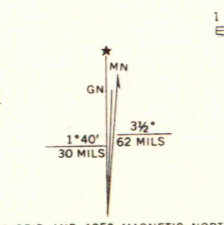


2873 IV  
(STANLEY)

2873 IV  
(ABBOTSFORD)



Maped, edited, and published by the Geological Survey in cooperation with State of Wisconsin Agencies  
Control by USGS and USC&GS  
Topography from aerial photographs by Kelsh plotter and by plane-table surveys 1953. Aerial photographs taken 1951  
Polyconic projection. 1927 North American datum  
10,000-foot grid based on Wisconsin coordinate system, central zone  
1000-meter Universal Transverse Mercator grid ticks, zone 15, shown in blue



MAP AND AIR PHOTO LIBRARY  
FEB 8 1972  
University of Wisconsin

1953 Copy 1-2

NEILLSVILLE, WIS.  
N4430-W9030/15

1953

AMS 2873 II—SERIES V761

(BLACK RIVER FALLS)  
2892 IV

CITY POINT  
2892 IV