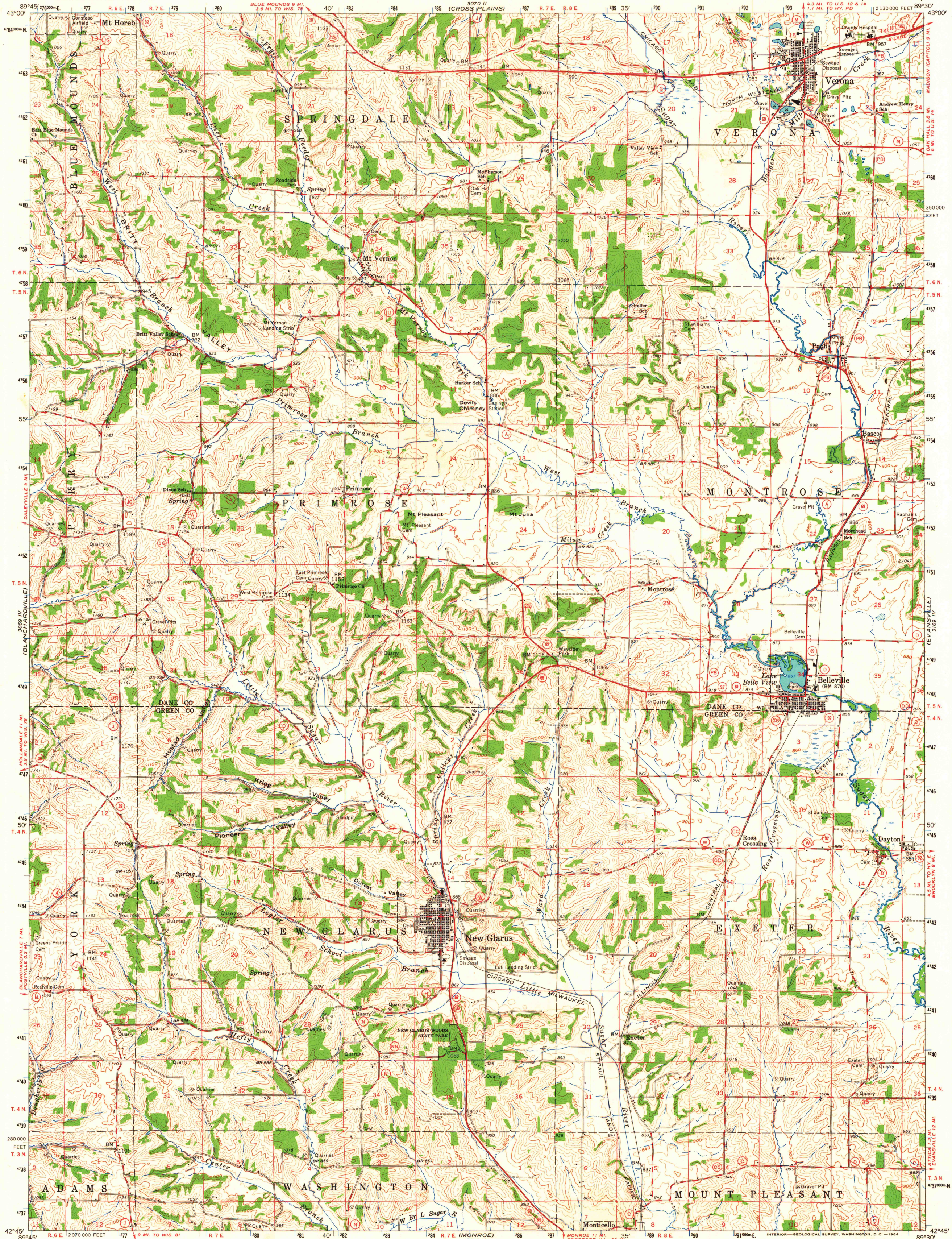


UNITED STATES
DEPARTMENT OF THE INTERIOR
GEOLOGICAL SURVEY

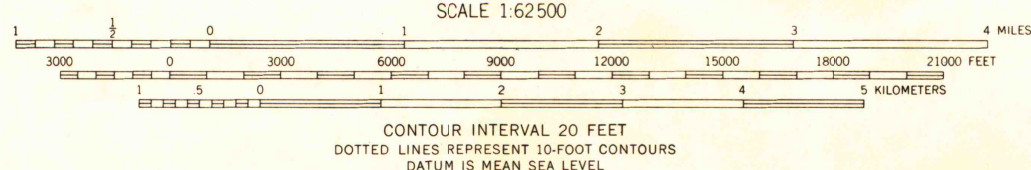
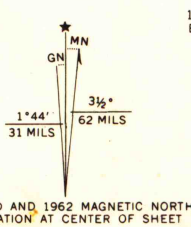
STATE OF WISCONSIN

NEW GLARUS QUADRANGLE
WISCONSIN
15 MINUTE SERIES (TOPOGRAPHIC)



Mapped, edited, and published by the Geological Survey
in cooperation with State of Wisconsin agencies
Control by USGS and USC&GS

Topography by photogrammetric methods from aerial
photographs taken 1961. Field checked 1962
Polyconic projection. 1927 North American datum
10,000-foot grid based on Wisconsin coordinate system, south zone
1000-meter Universal Transverse Mercator grid ticks,
zone 16, shown in blue



THIS MAP COMPLIES WITH NATIONAL MAP ACCURACY STANDARDS
FOR SALE BY U. S. GEOLOGICAL SURVEY, WASHINGTON 25, D. C.
AND BY THE WISCONSIN GEOLOGICAL AND NATURAL HISTORY SURVEY, MADISON 6, WISCONSIN
A FOLDER DESCRIBING TOPOGRAPHIC MAPS AND SYMBOLS IS AVAILABLE ON REQUEST



ROAD CLASSIFICATION
Heavy-duty ——— Light-duty ———
Medium-duty ——— Unimproved dirt ———

U. S. Route — State Route —

This area also covered by 7.5-minute, 1:24,000-scale
maps: Verona 1962; Mt. Vernon 1962; New Glarus 1962,
and Belleville 1962

NEW GLARUS, WIS.
N4245—W8930/15

1962
AMS 3069 I—SERIES V761

MAP AND AIR PHOTO LIBRARY
University of Wisconsin

LIBRARY USE ONLY

1962
Copy
1-1