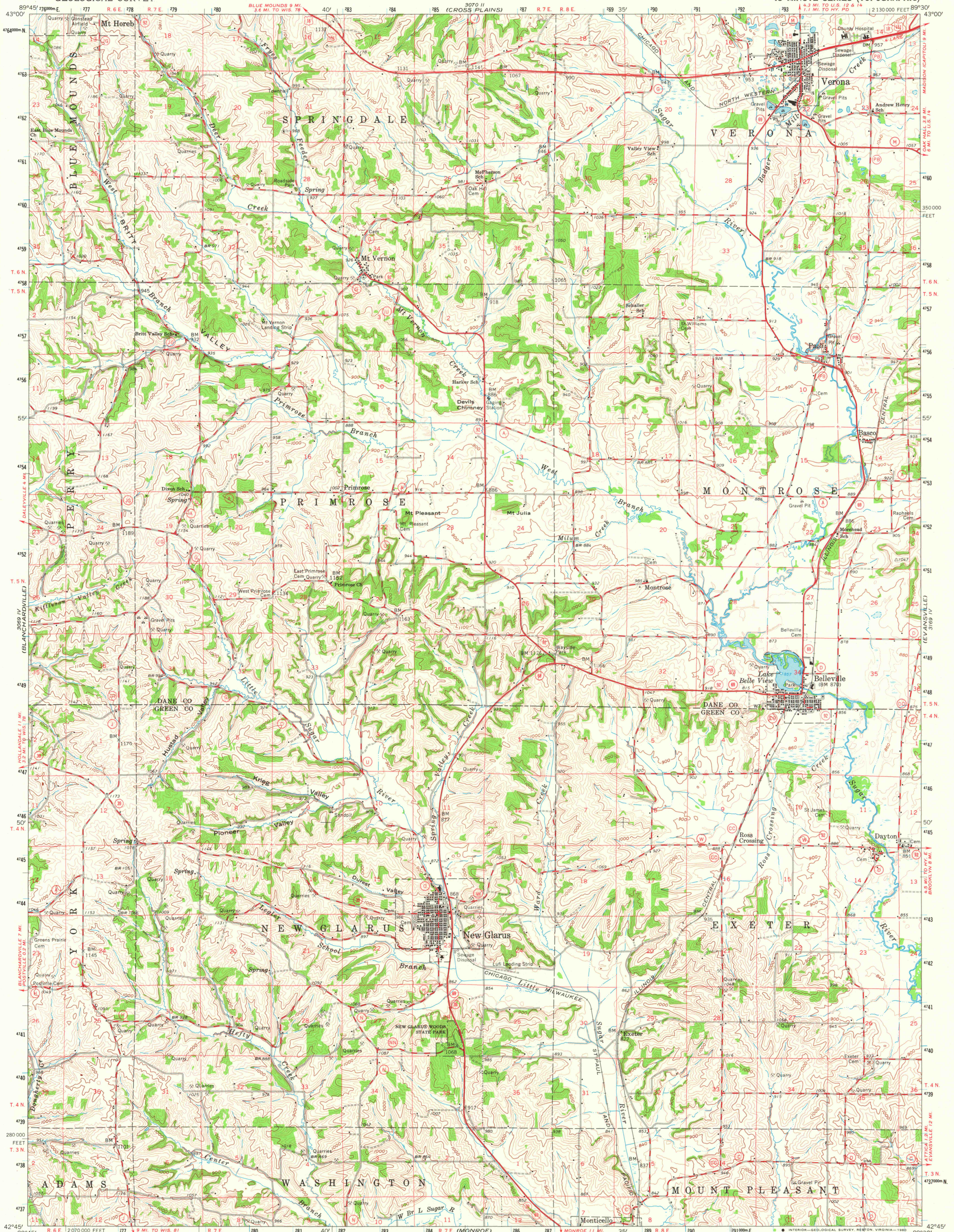


UNITED STATES  
DEPARTMENT OF THE INTERIOR  
GEOLOGICAL SURVEY

STATE OF WISCONSIN

NEW GLARUS QUADRANGLE  
WISCONSIN  
15 MINUTE SERIES (TOPOGRAPHIC)

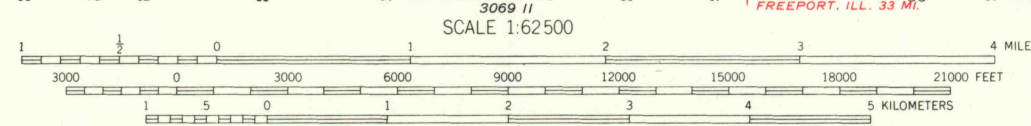


Maped, edited, and published by the Geological Survey  
in cooperation with State of Wisconsin agencies  
Control by USGS and USC&GS

Topography by photogrammetric methods from aerial  
photographs taken 1961. Field checked 1962  
Polyconic projection. 1927 North American datum  
10,000-foot grid based on Wisconsin coordinate system, south zone  
1000-meter Universal Transverse Mercator grid ticks,  
zone 16, shown in blue

To place on the predicted North American Datum 1983 move  
the projection lines 4 meters north and 10 meters east

There may be private inholdings within the boundaries of  
the National or State reservations shown on this map



CONTOUR INTERVAL 20 FEET  
DOTTED LINES REPRESENT 10-FOOT CONTOURS  
NATIONAL GEODETIC VERTICAL DATUM OF 1929

THIS MAP COMPLIES WITH NATIONAL MAP ACCURACY STANDARDS  
FOR SALE BY U. S. GEOLOGICAL SURVEY, RESTON, VIRGINIA 22092  
AND WISCONSIN GEOLOGICAL AND NATURAL HISTORY SURVEY, MADISON, WISCONSIN 53706  
A FOLDER DESCRIBING TOPOGRAPHIC MAPS AND SYMBOLS IS AVAILABLE ON REQUEST

ROAD CLASSIFICATION  
Heavy-duty ——— Light-duty ———  
Medium-duty ——— Unimproved dirt ———

U. S. Route ——— State Route ———

This area also covered by 7.5-minute, 1:24,000-scale  
maps: Verona 1962, Mt. Vernon 1962, New Glarus 1962,  
and Belleville 1962

NEW GLARUS, WIS.  
N4245—W8930/15

1962

AMS 3069 I—SERIES V761