

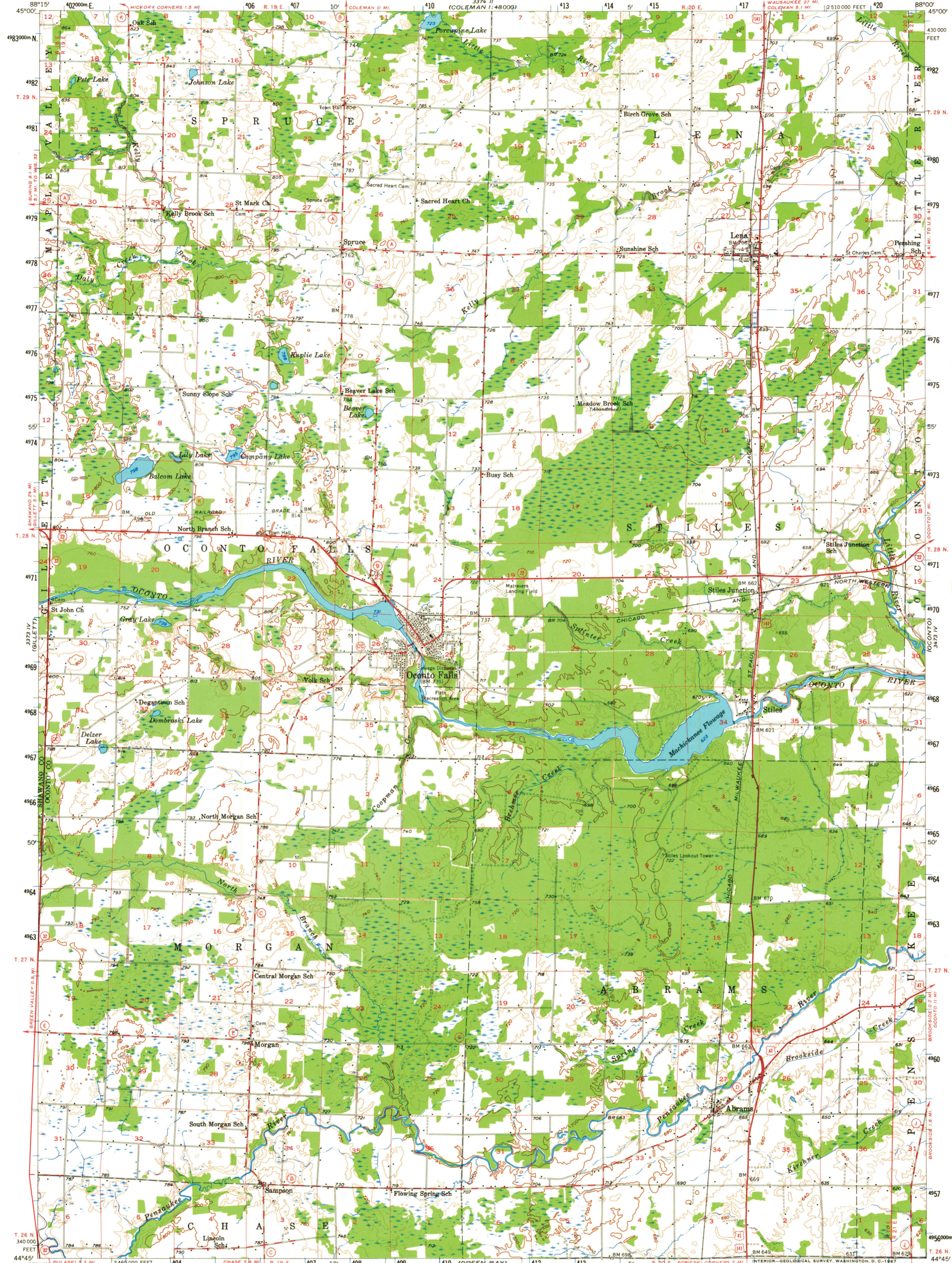
(MILWAUKEE 21 MI.)
(MILWAUKEE 21 MI.)

UNITED STATES
DEPARTMENT OF THE INTERIOR
GEOLOGICAL SURVEY

STATE OF WISCONSIN

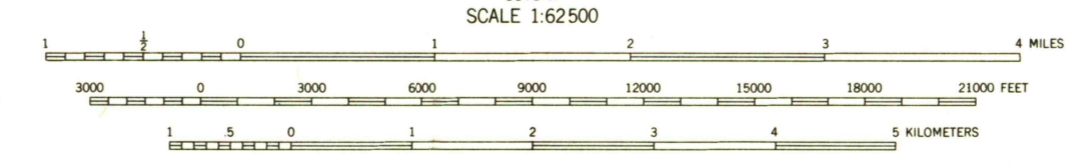
OCONTO FALLS QUADRANGLE
WISCONSIN
15 MINUTE SERIES (TOPOGRAPHIC)

(PORTERFIELD 18 MI.)
(PORTERFIELD 18 MI.)



(SEYMOUR 22 MI.)
(SEYMOUR 22 MI.)

Mapped, edited, and published by the Geological Survey
in cooperation with State of Wisconsin agencies
Control by USGS and USC&GS
Topography from aerial photographs by Kelsh plotters
Aerial photographs taken 1951-1952. Field check 1956
Polyconic projection. 1927 North American datum
10,000-foot grid based on Wisconsin coordinate system, central zone
1,000-meter Universal Transverse Mercator grid ticks,
zone 16, shown in blue



CONTOUR INTERVAL 20 FEET
DOTTED LINES REPRESENT 10-FOOT CONTOURS
DATUM IS MEAN SEA LEVEL

ROAD CLASSIFICATION

Heavy-duty	Light-duty
Medium-duty	Unimproved dirt
U. S. Route	State Route



OCONTO FALLS, WIS.
N4445-W8800/15
1956
AMS 3373 I-SERIES V761

THIS MAP COMPLIES WITH NATIONAL MAP ACCURACY STANDARDS
FOR SALE BY U. S. GEOLOGICAL SURVEY, WASHINGTON, D. C. 20242
AND WISCONSIN GEOLOGICAL AND NATURAL HISTORY SURVEY, MADISON, WISCONSIN 53706
A FOLDER DESCRIBING TOPOGRAPHIC MAPS AND SYMBOLS IS AVAILABLE ON REQUEST

FILE COPY
TOPOGRAPHIC DIVISION

2675
JUN 5 1967