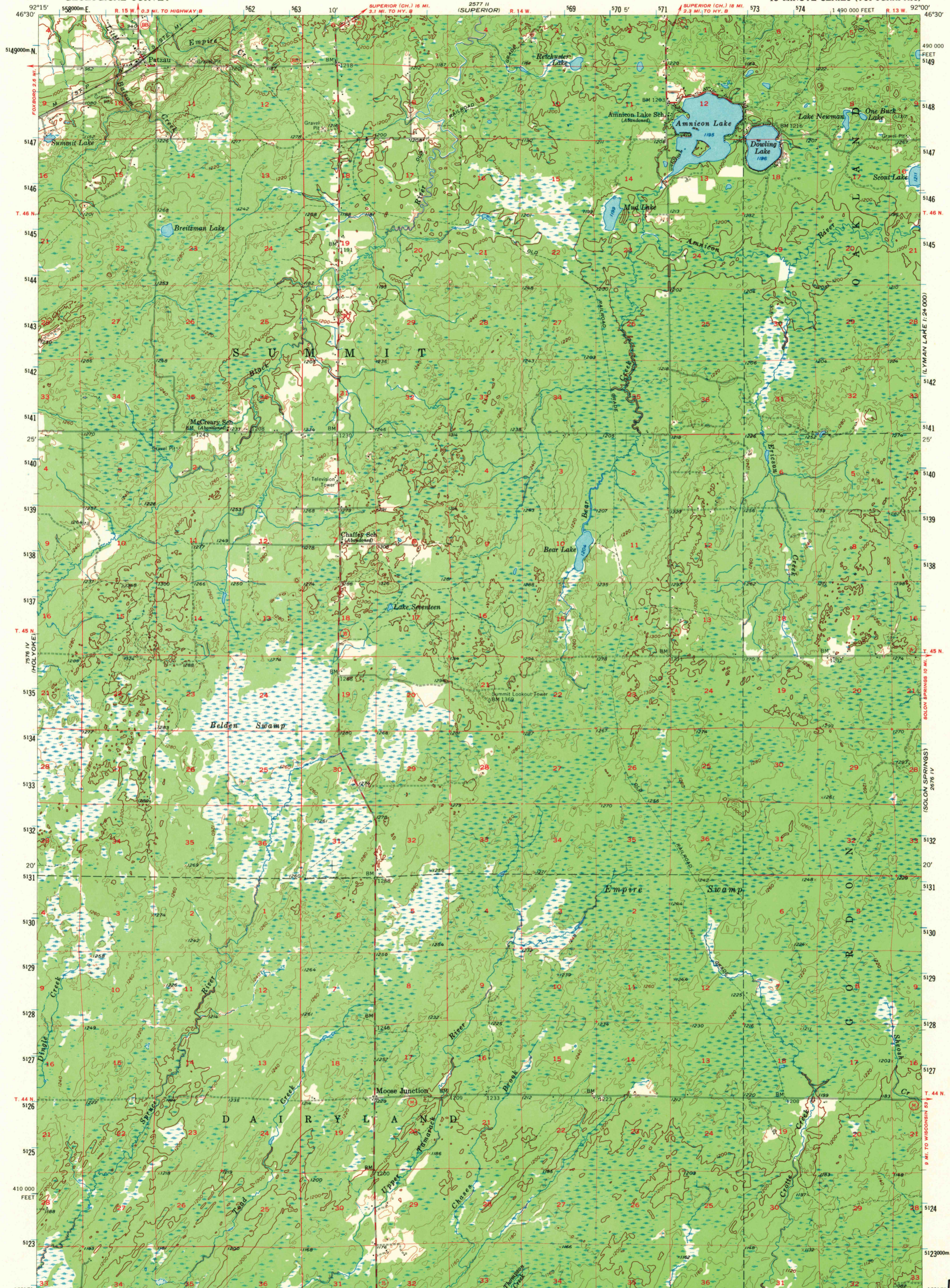


UNITED STATES
DEPARTMENT OF THE INTERIOR
GEOLOGICAL SURVEY

PATZAU QUADRANGLE
WISCONSIN-DOUGLAS CO.
15 MINUTE SERIES (TOPOGRAPHIC)

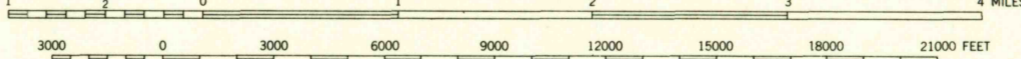


Mapped, edited, and published by the Geological Survey
Control by USGS and USC&GS

Topography from aerial photographs by Kelsh plotter
Aerial photographs taken 1952-1953. Field check 1954-1955

Polyconic projection. 1927 North American datum
10,000-foot grid based on Wisconsin coordinate system, north zone
1000-meter Universal Transverse Mercator grid ticks,
zone 15, shown in blue

SCALE 1:62500



CONTOUR INTERVAL 20 FEET
DATUM IS MEAN SEA LEVEL

ROAD CLASSIFICATION

Medium-duty ——— Light-duty ———
Unimproved dirt - - - - -
State Route ○

The north half of this area also covered by 1:24,000
scale maps of Amnicon Lake and Patzau, 7.5 minute
quadrangles, surveyed 1954.

PATZAU, WIS.
N4615-W9200/15

1955

AMS 2576 I-SERIES V761

U.S.G.S.
FILE COPY
TOPOGRAPHIC DIVISION

2005

JUL 7 1970

THIS MAP COMPLIES WITH NATIONAL MAP ACCURACY STANDARDS
FOR SALE BY U. S. GEOLOGICAL SURVEY, WASHINGTON, D. C. 20242
AND WISCONSIN GEOLOGICAL AND NATURAL HISTORY SURVEY, MADISON, WISCONSIN 53706
A FOLDER DESCRIBING TOPOGRAPHIC MAPS AND SYMBOLS IS AVAILABLE ON REQUEST