

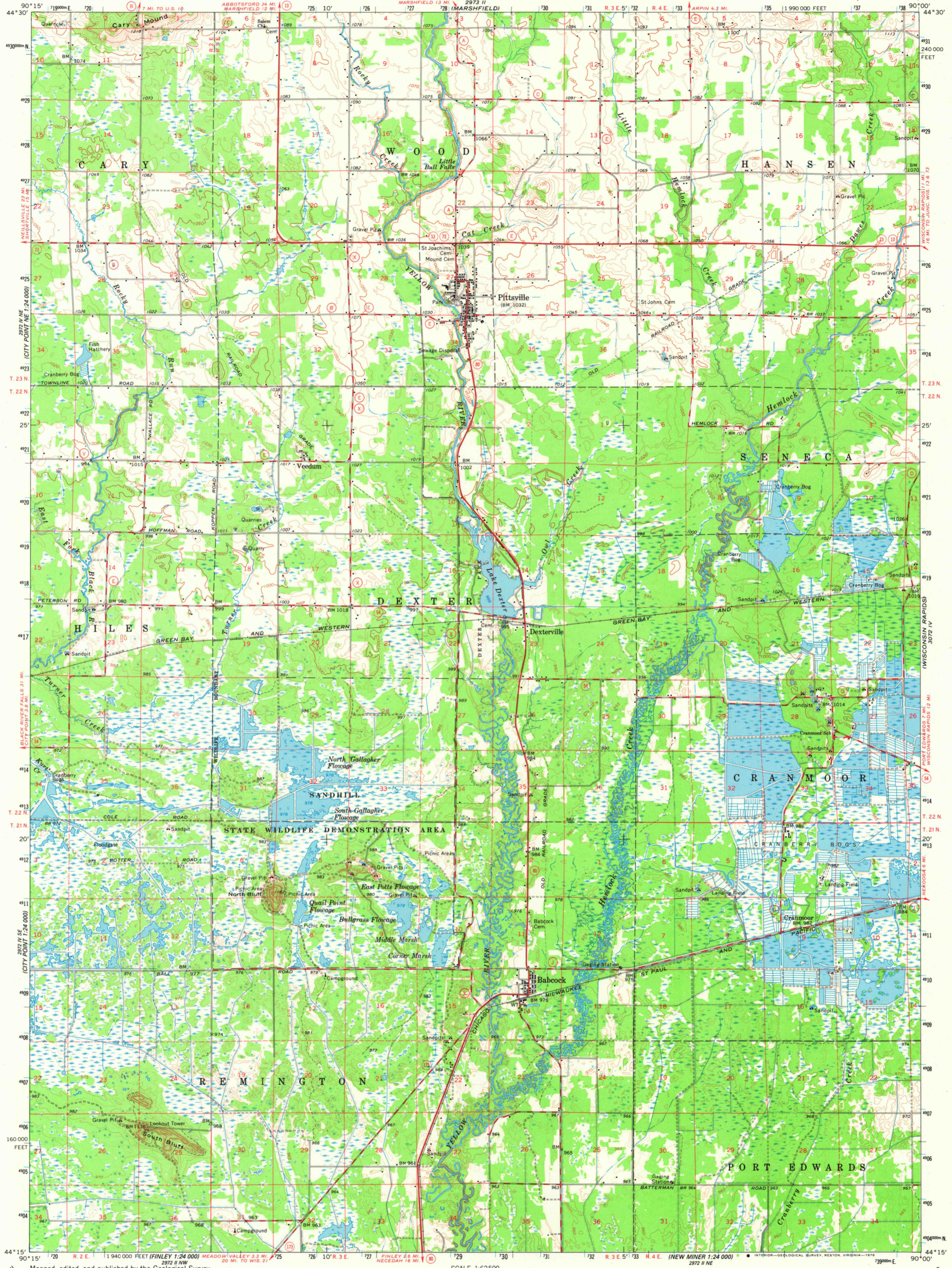
292.15
16842000

UNITED STATES
DEPARTMENT OF THE INTERIOR
GEOLOGICAL SURVEY

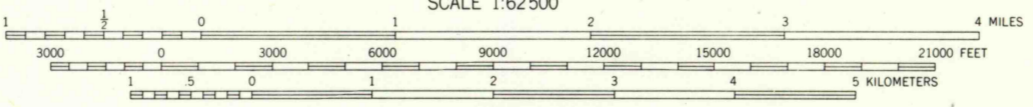
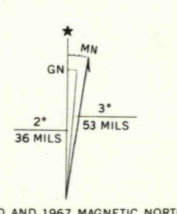
STATE OF WISCONSIN
STATE HIGHWAY COMMISSION
GEOLOGICAL AND NATURAL HISTORY SURVEY

PITTSVILLE QUADRANGLE
WISCONSIN - WOOD CO.
15 MINUTE SERIES (TOPOGRAPHIC)

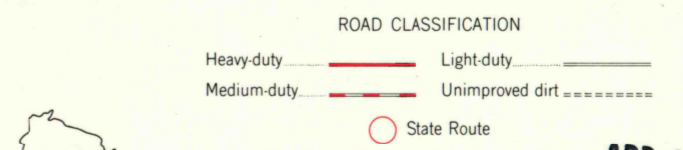
30 30 W W
16842000



Mapped, edited, and published by the Geological Survey in cooperation with the Wisconsin Highway Commission and Wisconsin Geological and Natural History Survey Control by USGS and USC&GS
Topography by photogrammetric methods from aerial photographs taken 1966 and planetable surveys 1967 Supersedes planimetric map dated 1957
Polyconic projection. 1927 North American datum 10,000-foot grid based on Wisconsin coordinate system, central zone
1000-meter Universal Transverse Mercator grid ticks, zone 15, shown in blue



SCALE 1:62500
CONTOUR INTERVAL 10 FEET
DOTTED LINES REPRESENT 5-FOOT CONTOURS
NATIONAL GEODETIC VERTICAL DATUM OF 1929
THIS MAP COMPLIES WITH NATIONAL MAP ACCURACY STANDARDS FOR SALE BY U. S. GEOLOGICAL SURVEY, RESTON, VIRGINIA 22092 AND WISCONSIN GEOLOGICAL AND NATURAL HISTORY SURVEY, MADISON, WISCONSIN 53706 A FOLDER DESCRIBING TOPOGRAPHIC MAPS AND SYMBOLS IS AVAILABLE ON REQUEST



APR 28 1978
PITTSVILLE, WIS.
N4415-W9000/15
1967
AMS 2972 I -SERIES V761

USGS
Historical File
Topographic Division

5270