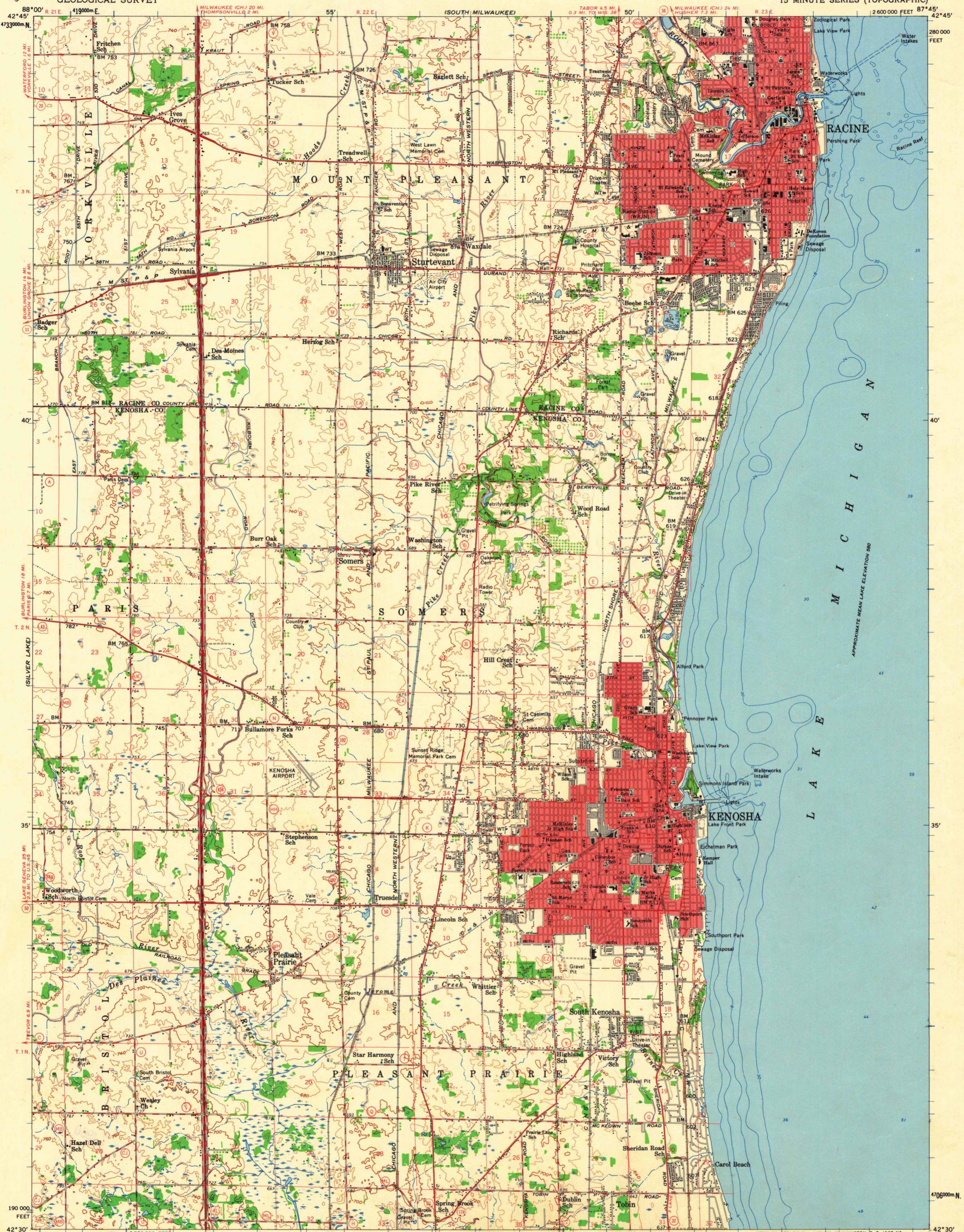


UNITED STATES
DEPARTMENT OF THE INTERIOR
GEOLOGICAL SURVEY

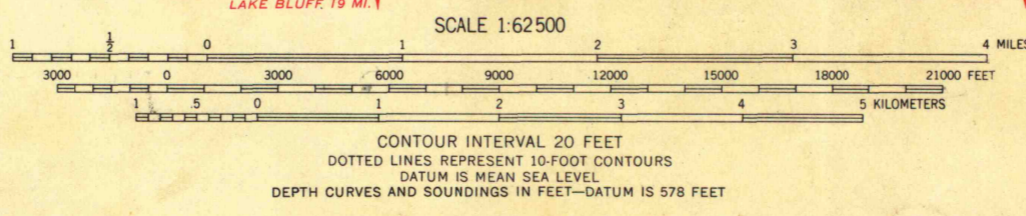
RACINE QUADRANGLE
WISCONSIN
15 MINUTE SERIES (TOPOGRAPHIC)



Maped, edited, and published by the Geological Survey
Control by USGS, USC&GS, and U. S. Lake Survey
Compiled in 1960 from 1:24 000-scale maps of
Racine South, Sturtevant, Pleasant Prairie, and
Kenosha 7.5 minute quadrangles, surveyed 1958-1959
Topography from aerial photographs by photogrammetric methods
Aerial photographs taken 1955
Hydrography compiled from U. S. Lake Survey charts 74 (1950)
and 745 (1957)

Polyconic projection. 1927 North American datum
10,000-foot grid based on Wisconsin coordinate system, south zone
100-meter Universal Transverse Mercator grid ticks,
zone 16, shown in blue
Red tint indicates areas in which only
landmark buildings are shown

TRUE NORTH
MAGNETIC NORTH
APPROXIMATE MEAN
DECLINATION, 1959



CONTOUR INTERVAL 20 FEET
DOTTED LINES REPRESENT 10-FOOT CONTOURS
DATUM IS MEAN SEA LEVEL
DEPTH CURVES AND SOUNDINGS IN FEET-DATUM IS 578 FEET

THIS MAP COMPLIES WITH NATIONAL MAP ACCURACY STANDARDS
FOR SALE BY U. S. GEOLOGICAL SURVEY, WASHINGTON 25, D. C.
AND BY THE WISCONSIN GEOLOGICAL AND NATURAL HISTORY SURVEY, MADISON 6, WISCONSIN
A FOLDER DESCRIBING TOPOGRAPHIC MAPS AND SYMBOLS IS AVAILABLE ON REQUEST



QUADRANGLE LOCATION

ROAD CLASSIFICATION
Heavy-duty ——— Light-duty ———
Medium-duty ——— Unimproved dirt - - - - -
U. S. Route State Route

This area also covered by 1:24 000-scale maps of
Racine South 1958, Sturtevant 1959, Pleasant Prairie 1958,
and Kenosha 1958 7.5 minute quadrangles

RACINE, WIS.
N4230-W8745/15

MAP AND AIR PHOTO LIBRARY
University of Wisconsin

FOR LIBRARY USE
ONLY

1959
Copy
1-1