

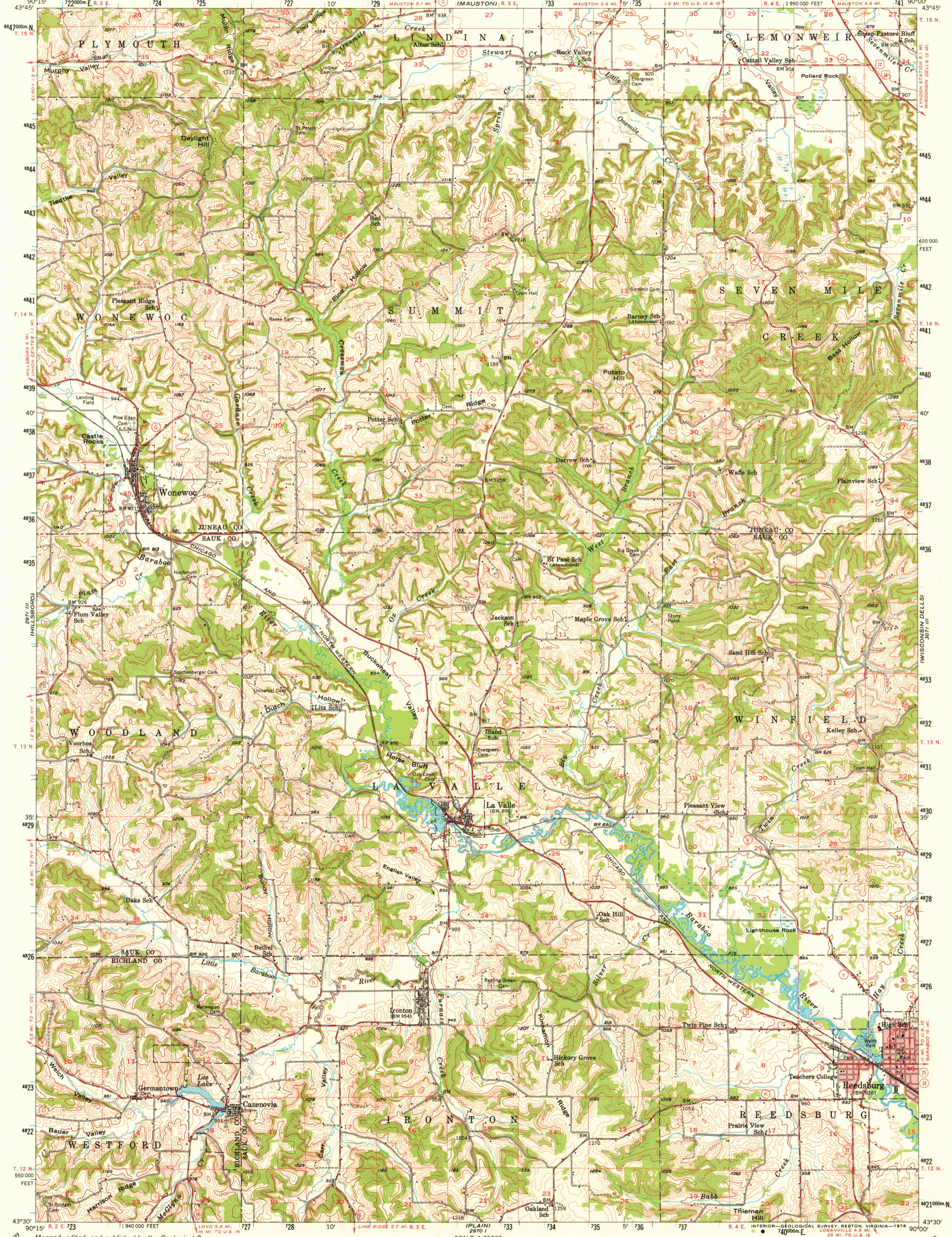
291 AL
(RELAND AL)

UNITED STATES
DEPARTMENT OF THE INTERIOR
GEOLOGICAL SURVEY

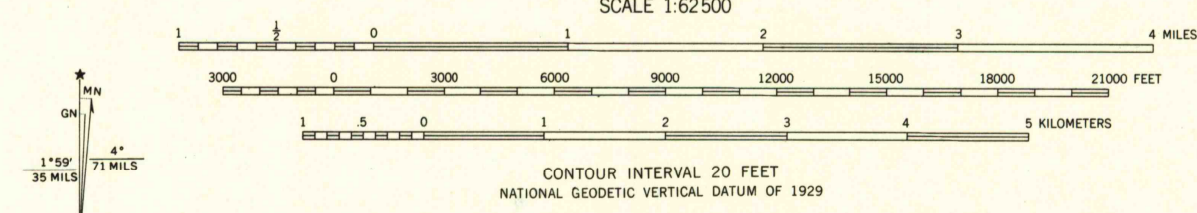
STATE OF WISCONSIN

REEDSBURG QUADRANGLE
WISCONSIN
15 MINUTE SERIES (TOPOGRAPHIC)

291 IV
(ADAMS)



Mapped, edited, and published by the Geological Survey in cooperation with State of Wisconsin agencies
Control by USGS and USC&GS
Topography from aerial photographs by multiple methods
Aerial photographs taken 1954. Field check 1956
Polyconic projection. 1927 North American datum
10,000-foot grid based on Wisconsin coordinate system, south zone
1,000-meter Universal Transverse Mercator grid ticks, zone 15, shown in blue
Red tint indicates areas in which only landmark buildings are shown



ROAD CLASSIFICATION
Heavy-duty ——— Light-duty ———
Medium-duty ——— Unimproved dirt ———
U.S. Route (circle with number) State Route (circle with number)
This area also covered by 7.5-minute, 1:24,000-scale maps: Plato Hill 1975, Wausau 1975, La Valle 1975, and Reedsburg West 1975
REEDSBURG, WIS.
N4330-W9000/15
1956
AMS 2971 II—SERIES V761

THIS MAP COMPLIES WITH NATIONAL MAP ACCURACY STANDARDS FOR SALE BY U.S. GEOLOGICAL SURVEY, RESTON, VIRGINIA 22092 AND BY THE WISCONSIN GEOLOGICAL AND NATURAL HISTORY SURVEY, MADISON, WISCONSIN 53706 A FOLDER DESCRIBING TOPOGRAPHIC MAPS AND SYMBOLS IS AVAILABLE ON REQUEST

(RICHLAND CENTER)
2970 IV

(NORTH FREDON)
2971 IV

