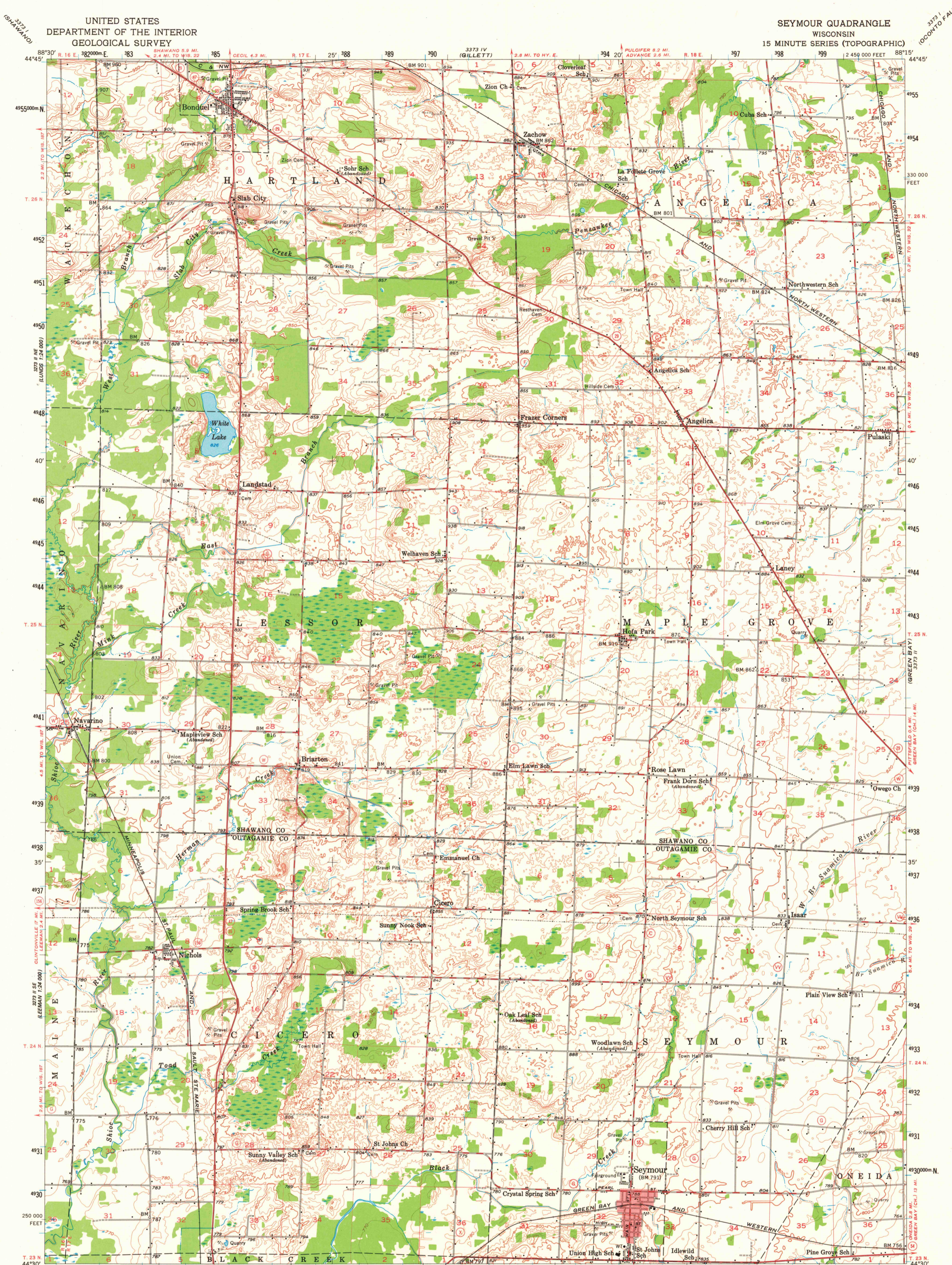
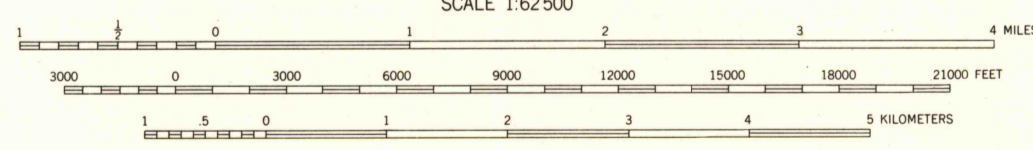
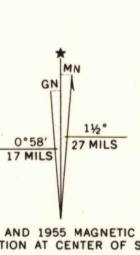


UNITED STATES
DEPARTMENT OF THE INTERIOR
GEOLOGICAL SURVEY

SEYMOUR QUADRANGLE
WISCONSIN
15 MINUTE SERIES (TOPOGRAPHIC)



Mapped, edited, and published by the Geological Survey
Control by USGS and USC&GS
Topography from aerial photographs by Kelsch plotter and by
planetab surveys 1955. Aerial photographs taken 1953
Polyconic projection. 1927 North American datum
10,000-foot grid based on Wisconsin coordinate system, central zone
1000 meter Universal Transverse Mercator Grid ticks,
Zone 16, shown in blue
Red tint indicates area in which only
landmark buildings are shown
To place on the predicted North American Datum 1983 move
the projection lines 5 meters north and 8 meters east



CONTOUR INTERVAL 10 FEET
NATIONAL GEODETIC VERTICAL DATUM OF 1929



ROAD CLASSIFICATION
Heavy-duty ——— Light-duty ———
Medium-duty ——— Unimproved dirt - - - - -
○ State Route

This area also covered by 7.5-minute, 1:24 000-scale
maps: Zachow 1974, Bonduel 1974, Nichols 1974,
and Seymour 1974

SEYMOUR, WIS.
N4430-W8815/15
1955
AMS 3373 III—SERIES V761

THIS MAP COMPLIES WITH NATIONAL MAP ACCURACY STANDARDS
FOR SALE BY U. S. GEOLOGICAL SURVEY, RESTON, VIRGINIA 22092
AND WISCONSIN GEOLOGICAL AND NATURAL HISTORY SURVEY, MADISON, WISCONSIN 53706
A FOLDER DESCRIBING TOPOGRAPHIC MAPS AND SYMBOLS IS AVAILABLE ON REQUEST