

2275
(47E)J

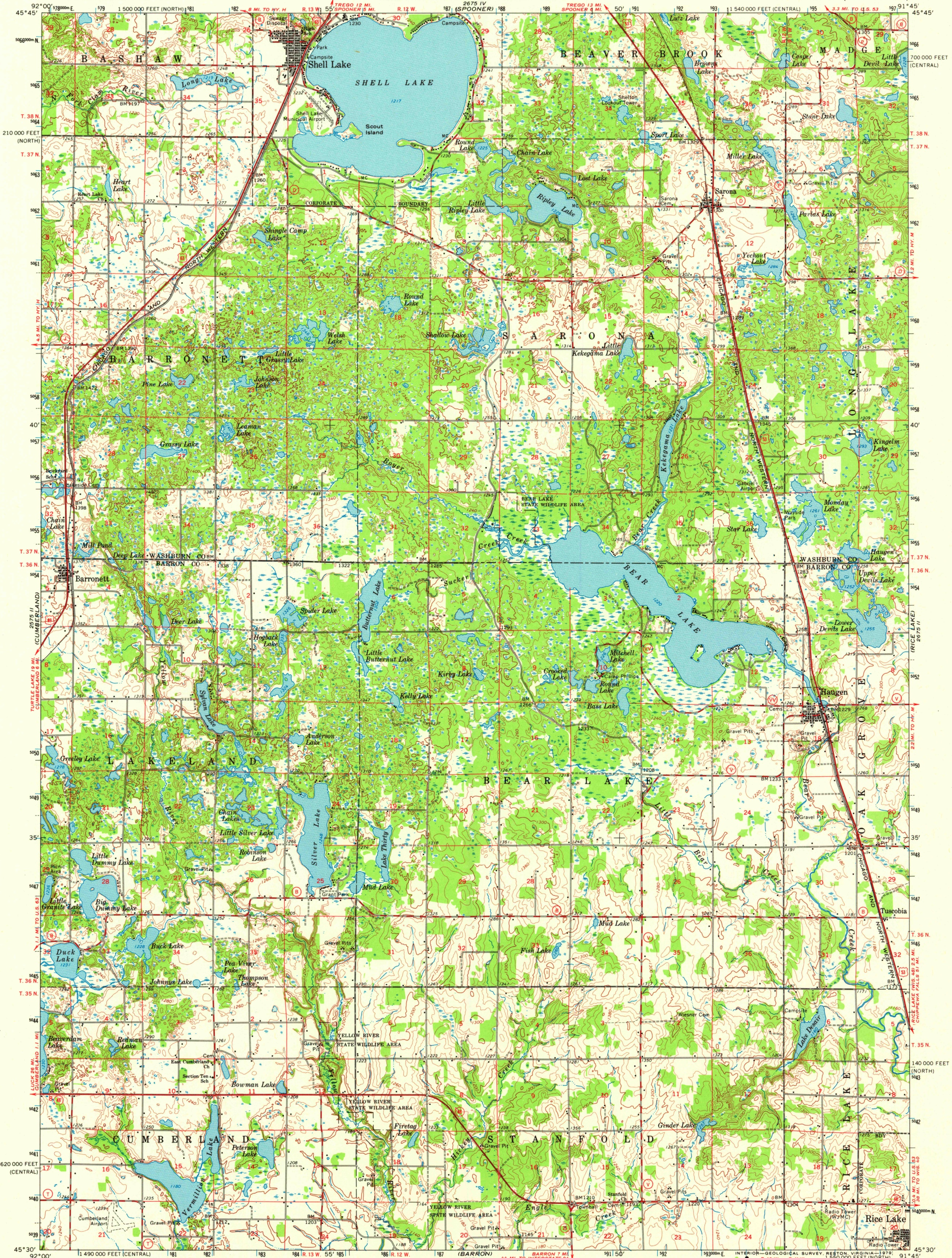
UNITED STATES
DEPARTMENT OF THE INTERIOR
GEOLOGICAL SURVEY



STATE OF WISCONSIN
STATE HIGHWAY COMMISSION
GEOLOGICAL AND NATURAL HISTORY SURVEY

SHELL LAKE QUADRANGLE
WISCONSIN
15 MINUTE SERIES (TOPOGRAPHIC)

2281 15W
10740 LAKE 1:24 000



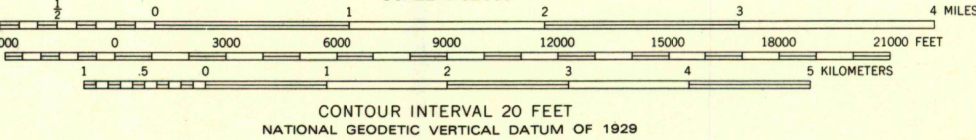
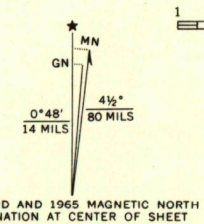
(TURTLE LAKE)
2274 15E

Mapped, edited, and published by the Geological Survey
in cooperation with the Wisconsin Highway Commission
and Wisconsin Geological and Natural History Survey
Control by USGS and USC&GS

Topography by photogrammetric methods from aerial
photographs taken 1963-64. Field checked 1965
Supersedes planimetric map dated 1949

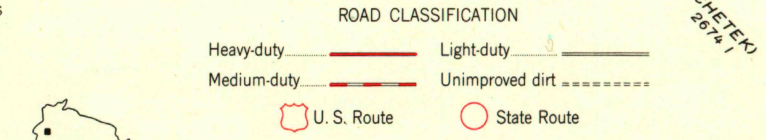
Polyconic projection. 1927 North American datum
10,000-foot grids based on Wisconsin coordinate system,
central and north zones
1000-meter Universal Transverse Mercator grid ticks,
zone 15, shown in blue

There may be private inholdings within the boundaries of
the National or State reservations shown on this map



CONTOUR INTERVAL 20 FEET
NATIONAL GEODETIC VERTICAL DATUM OF 1929

THIS MAP COMPLIES WITH NATIONAL MAP ACCURACY STANDARDS
FOR SALE BY U.S. GEOLOGICAL SURVEY, RESTON, VIRGINIA 22092
AND WISCONSIN GEOLOGICAL AND NATURAL HISTORY SURVEY, MADISON, WISCONSIN 53706
A FOLDER DESCRIBING TOPOGRAPHIC MAPS AND SYMBOLS IS AVAILABLE ON REQUEST



SHELL LAKE, WIS.
N4530—W9145/15
1965

AMS 2675 III—SERIES V761