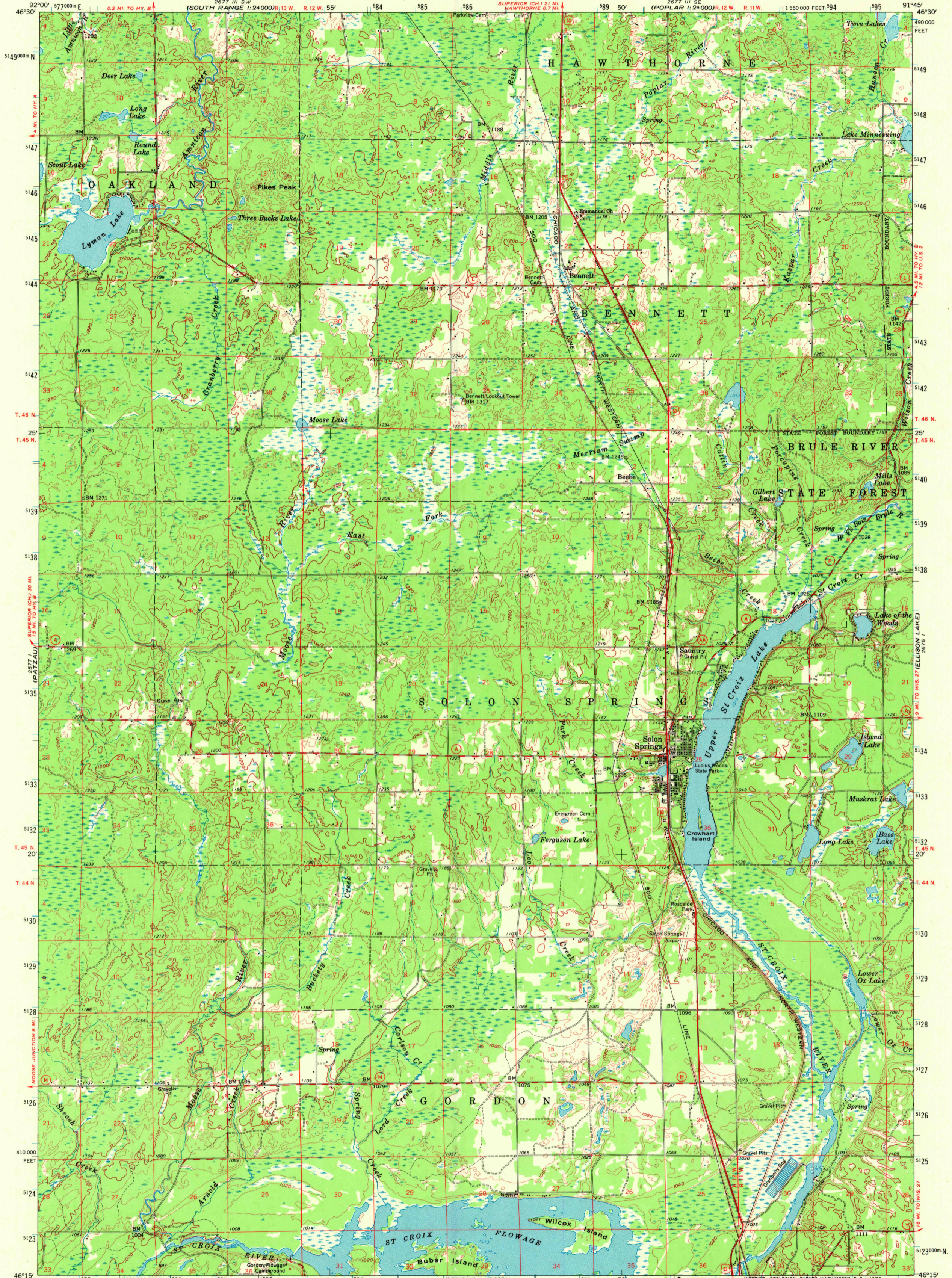


277' W (SUPERIOR)

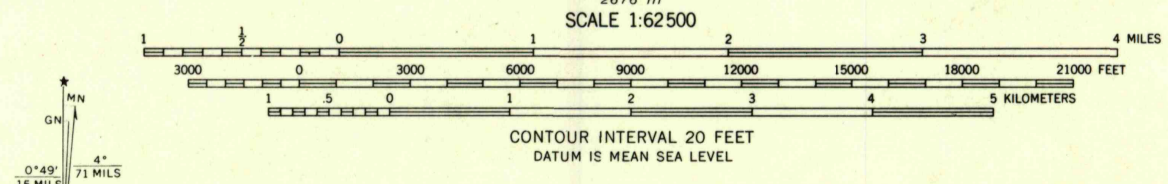
UNITED STATES
DEPARTMENT OF THE INTERIOR
GEOLOGICAL SURVEY

SOLON SPRINGS QUADRANGLE
WISCONSIN-DOUGLAS CO.
15 MINUTE SERIES (TOPOGRAPHIC)

277' E (BRULE)



Mapped, edited, and published by the Geological Survey
Control by USGS and USC&GS
NW quarter compiled in 1963 from 1:24 000-scale
map dated 1961. NE quarter and south half
topography by photogrammetric methods from aerial
photographs taken 1959. Field checked 1961
Polyconic projection. 1927 North American datum
10,000-foot grid based on Wisconsin coordinate system, north zone
1000-meter Universal Transverse Mercator grid ticks,
zone 15, shown in blue



ROAD CLASSIFICATION
Heavy-duty ——— Light-duty ———
Medium-duty ——— Unimproved dirt - - - - -
U.S. Route (red circle) State Route (white circle)
The NW 1/4 of this area also covered by 7.5 minute,
1:24 000-scale map: Lyman Lake 1961

THIS MAP COMPLIES WITH NATIONAL MAP ACCURACY STANDARDS
FOR SALE BY U. S. GEOLOGICAL SURVEY, WASHINGTON, D. C. 20242
AND WISCONSIN GEOLOGICAL AND NATURAL HISTORY SURVEY, MADISON, WISCONSIN 53706
A FOLDER DESCRIBING TOPOGRAPHIC MAPS AND SYMBOLS IS AVAILABLE ON REQUEST

SOLON SPRINGS, WIS.
N4615-W9145/15

1961

AMS 2676 IV-SERIES V761