

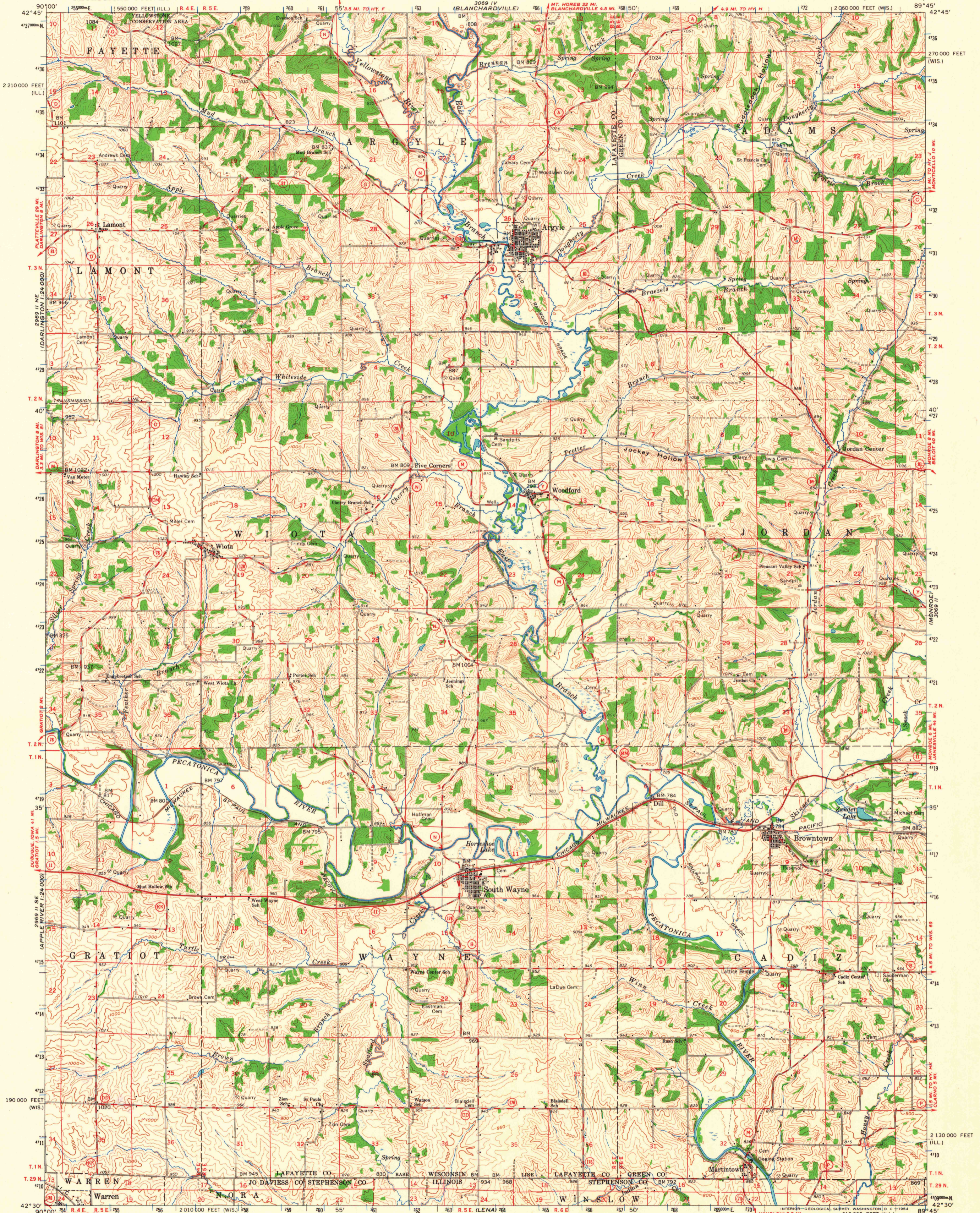
3068 IV  
1:24,000

UNITED STATES  
DEPARTMENT OF THE INTERIOR  
GEOLOGICAL SURVEY

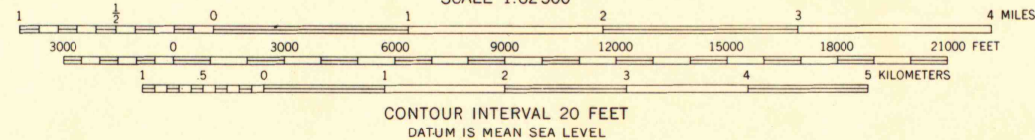
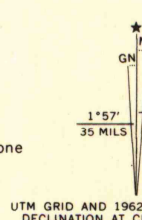
STATE OF WISCONSIN

SOUTH WAYNE QUADRANGLE  
WISCONSIN-ILLINOIS  
15 MINUTE SERIES (TOPOGRAPHIC)

3069 I  
NEW GLAUSI



Maped, edited, and published by the Geological Survey in cooperation with State of Wisconsin agencies  
Control by USGS and USC&GS  
Topography by photogrammetric methods from aerial photographs taken 1961. Field checked 1962  
Polyconic projection. 1927 North American datum  
10,000-foot grids based on Wisconsin coordinate system, south zone and Illinois coordinate system, west zone  
1000-meter Universal Transverse Mercator grid ticks, zone 16, shown in blue



ROAD CLASSIFICATION

Heavy-duty	Light-duty
Medium-duty	Unimproved dirt

State Route

THIS MAP COMPLIES WITH NATIONAL MAP ACCURACY STANDARDS FOR SALE BY U. S. GEOLOGICAL SURVEY, WASHINGTON 25, D. C. THE WISCONSIN GEOLOGICAL AND NATURAL HISTORY SURVEY, MADISON 6, WISCONSIN AND BY THE STATE GEOLOGICAL SURVEY, URBANA, ILLINOIS A FOLDER DESCRIBING TOPOGRAPHIC MAPS AND SYMBOLS IS AVAILABLE ON REQUEST  
MAP AND AIR PHOTO LIBRARY  
University of Wisconsin



QUADRANGLE LOCATION  
SOUTH WAYNE, WIS.-ILL.  
N4230-W894546

LIBRARY USE ONLY

1962  
AMS 3068 III-SERIES V761

1962  
COPY  
1-1