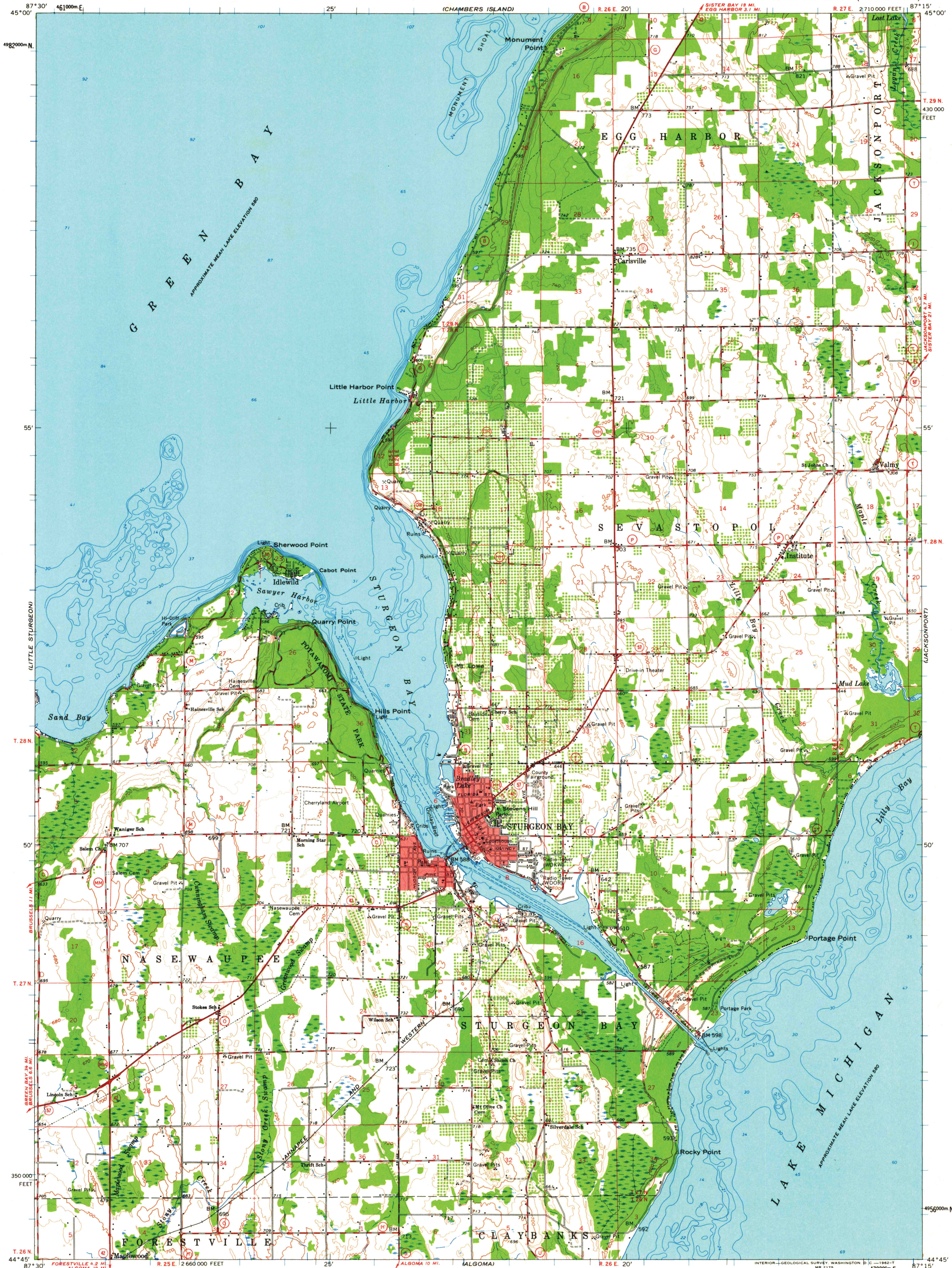


MARINETTE
1:25000

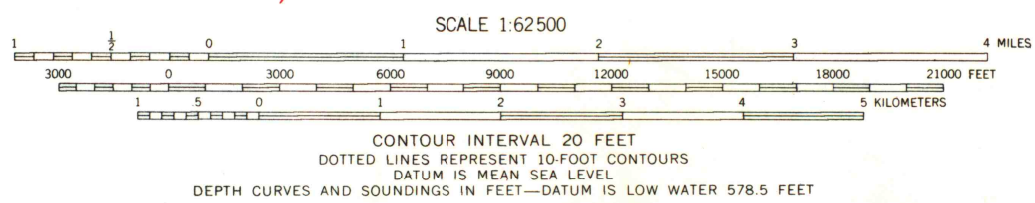
UNITED STATES
DEPARTMENT OF THE INTERIOR
GEOLOGICAL SURVEY

STURGEON BAY QUADRANGLE
WISCONSIN—DOOR CO.
15 MINUTE SERIES (TOPOGRAPHIC)

SISTER BAY



Mapped, edited, and published by the Geological Survey
Control by USGS and USC&GS, and U. S. Lake Survey
Topography by photogrammetric methods from aerial
photographs taken 1954-1955. Field checked 1960
Selected hydrographic data compiled from U. S. Lake Survey
Charts 703 and 728 (1954). This information is not intended
for navigational purposes
Polyconic projection. 1927 North American datum
10,000-foot grid based on Wisconsin coordinate system, central zone
1000-meter Universal Transverse Mercator grid ticks,
zone 16, shown in blue
Red tint indicates areas in which only landmark buildings are shown



ROAD CLASSIFICATION
Heavy-duty ——— Light-duty ———
Medium-duty ——— Unimproved dirt ———
○ State Route



STURGEON BAY, WIS.
N4445—W8715/15
1960

THIS MAP COMPLIES WITH NATIONAL MAP ACCURACY STANDARDS
FOR SALE BY U. S. GEOLOGICAL SURVEY, WASHINGTON 25, D. C.
AND BY THE WISCONSIN GEOLOGICAL AND NATURAL HISTORY SURVEY, MADISON 6, WISCONSIN
A FOLDER DESCRIBING TOPOGRAPHIC MAPS AND SYMBOLS IS AVAILABLE ON REQUEST

1960
Copy
1-1

MAP AND AIR PHOTO
LIBRARY

SEP 21 1971

University of Wisconsin

repl
①