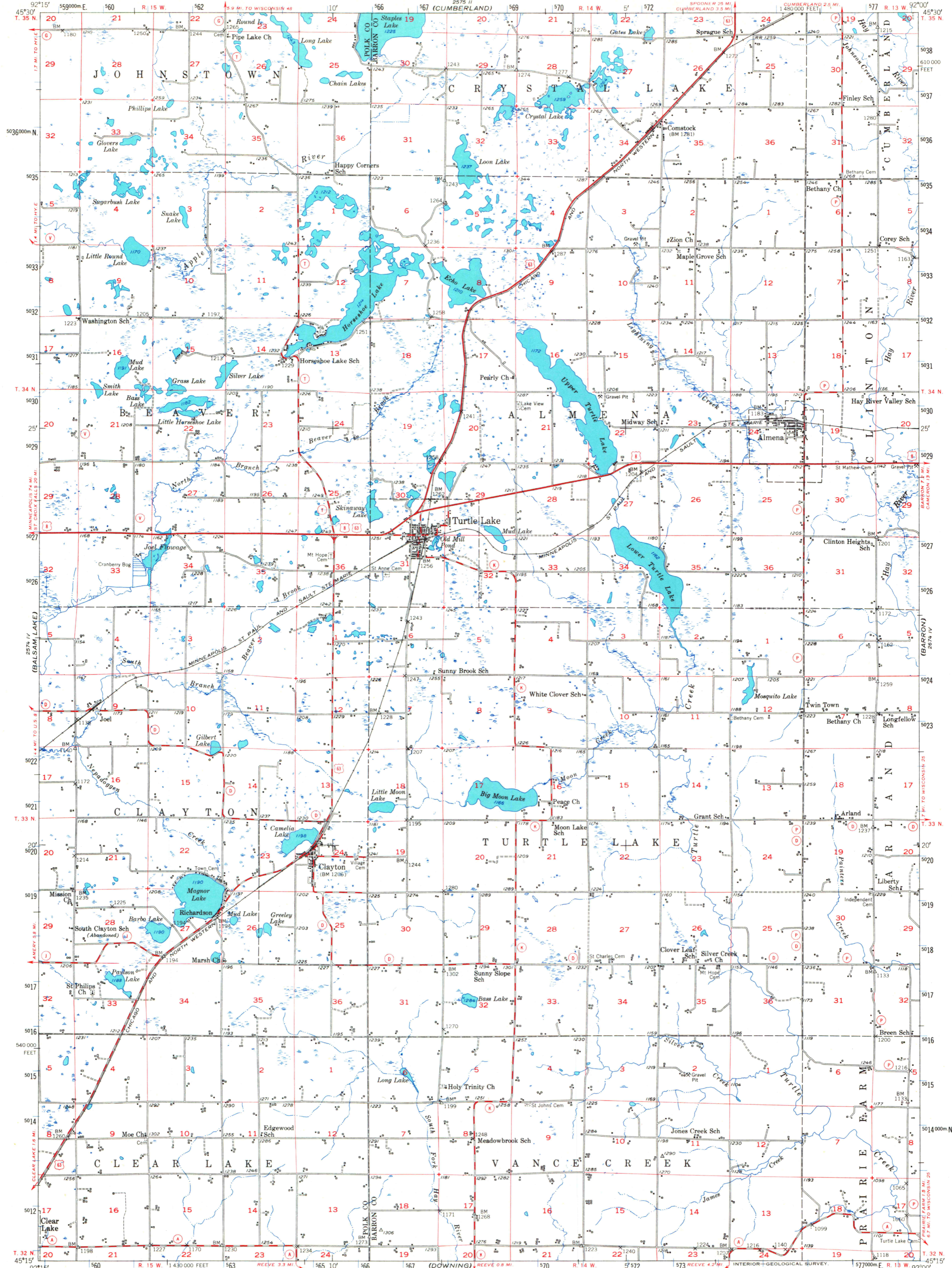


UNITED STATES
DEPARTMENT OF THE INTERIOR
GEOLOGICAL SURVEY

TURTLE LAKE QUADRANGLE
WISCONSIN
15 MINUTE SERIES (TOPOGRAPHIC)



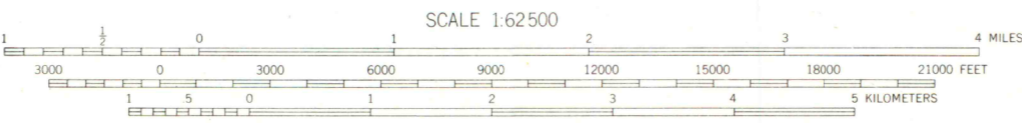
Mapped, edited, and published by the Geological Survey

Control by USGS and USC&GS

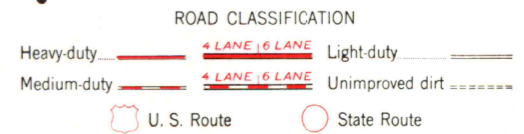
Topography from aerial photographs by multiple methods
Aerial photographs taken 1947. Field check 1950

Polyconic projection. 1927 North American datum
10,000-foot grid based on Wisconsin coordinate system,
central zone

1000-meter Universal Transverse Mercator grid ticks,
zone 15, shown in blue



SCALE 1:62,500



CONTOUR INTERVAL 20 FEET
DATUM IS MEAN SEA LEVEL

THIS MAP COMPLIES WITH NATIONAL MAP ACCURACY STANDARDS
FOR SALE BY U. S. GEOLOGICAL SURVEY, WASHINGTON, D. C. 20242
AND WISCONSIN GEOLOGICAL AND NATURAL HISTORY SURVEY, MADISON, WISCONSIN 53706
A FOLDER DESCRIBING TOPOGRAPHIC MAPS AND SYMBOLS IS AVAILABLE ON REQUEST

TURTLE LAKE, WIS.
N4515-W9200/15
1950
AMS 2574 I-SERIES V761

SPECIAL PRINTING
Contours and woodland symbols omitted

A.H. ROBINSON
MAP LIBRARY

NOV 7 6 1997

University of Wisconsin
Madison

1950
Copy
1-2

4-440