

2711  
LA CROSSE

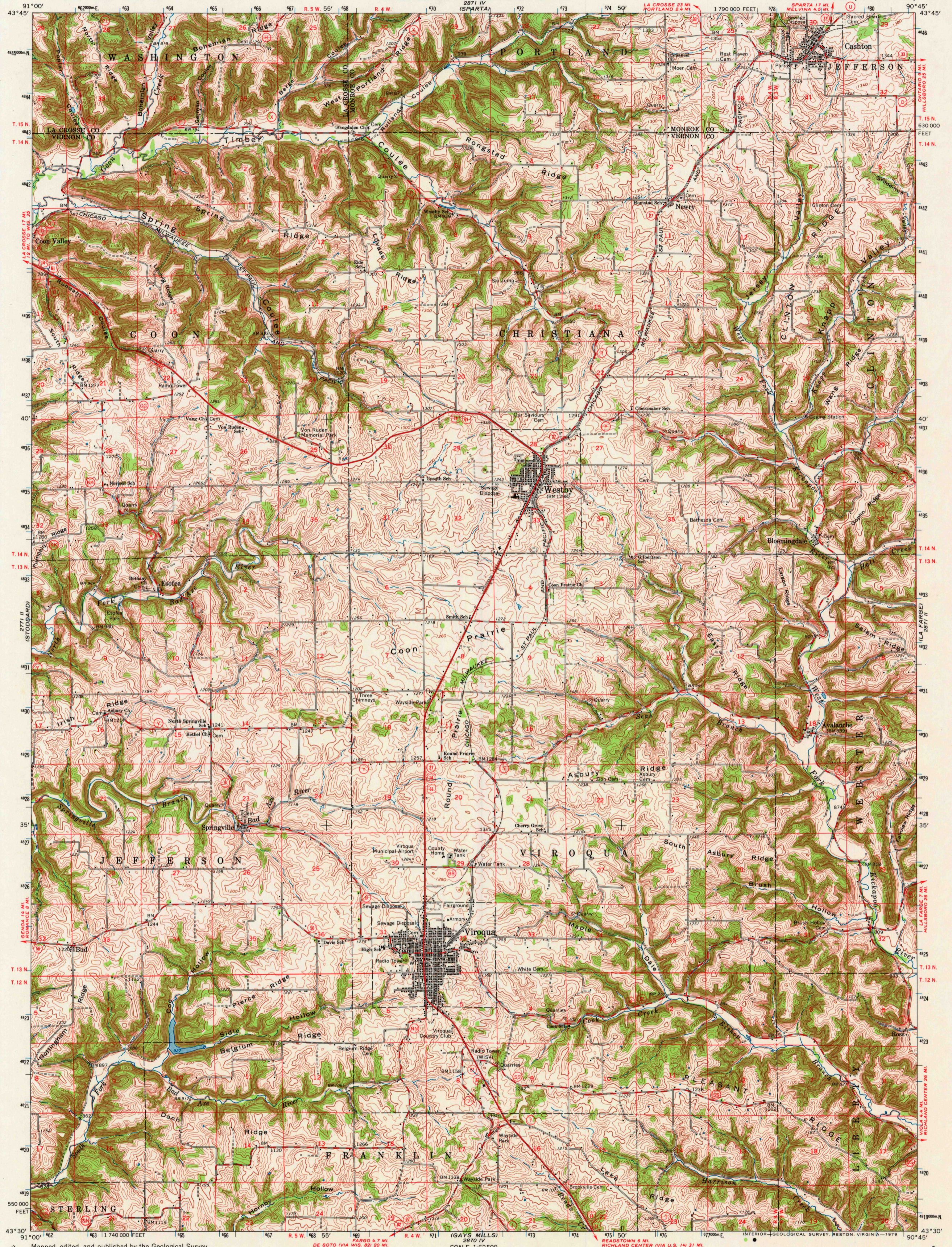
UNITED STATES  
DEPARTMENT OF THE INTERIOR  
GEOLOGICAL SURVEY



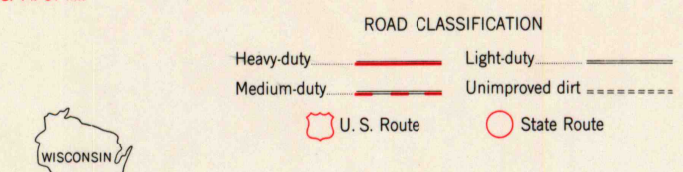
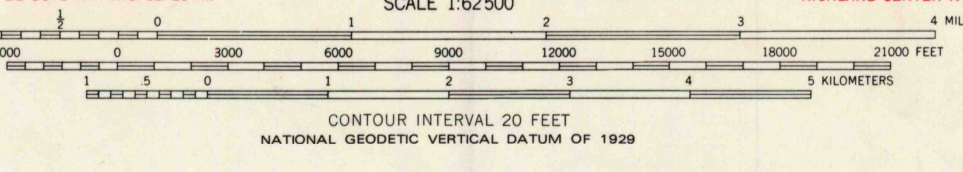
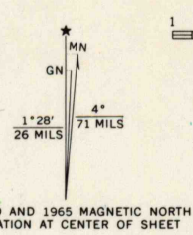
STATE OF WISCONSIN  
STATE HIGHWAY COMMISSION  
GEOLOGICAL AND NATURAL HISTORY SURVEY  
(SPARTA)

VIROQUA QUADRANGLE  
WISCONSIN  
15 MINUTE SERIES (TOPOGRAPHIC)

2771  
FOWAN



Mapped, edited, and published by the Geological Survey in cooperation with the Wisconsin Highway Commission and Wisconsin Geological and Natural History Survey. Control by USGS and USC&GS. Topography by photogrammetric methods from aerial photographs taken 1963-64. Field checked 1965. Supersedes map dated 1923. Polyconic projection. 1927 North American datum. 10,000-foot grid based on Wisconsin coordinate system, south zone. 1000-meter Universal Transverse Mercator grid ticks, zone 15, shown in blue.



VIROQUA, WIS.  
N4330-W9045/15  
1965  
DMA 2871 III -SERIES V761

THIS MAP COMPLIES WITH NATIONAL MAP ACCURACY STANDARDS FOR SALE BY U. S. GEOLOGICAL SURVEY, RESTON, VIRGINIA 22092 AND WISCONSIN GEOLOGICAL AND NATURAL HISTORY SURVEY, MADISON, WISCONSIN 53706. A FOLDER DESCRIBING TOPOGRAPHIC MAPS AND SYMBOLS IS AVAILABLE ON REQUEST.

JUN 26 1979

USGS  
Historical File  
Topographic Division

2500