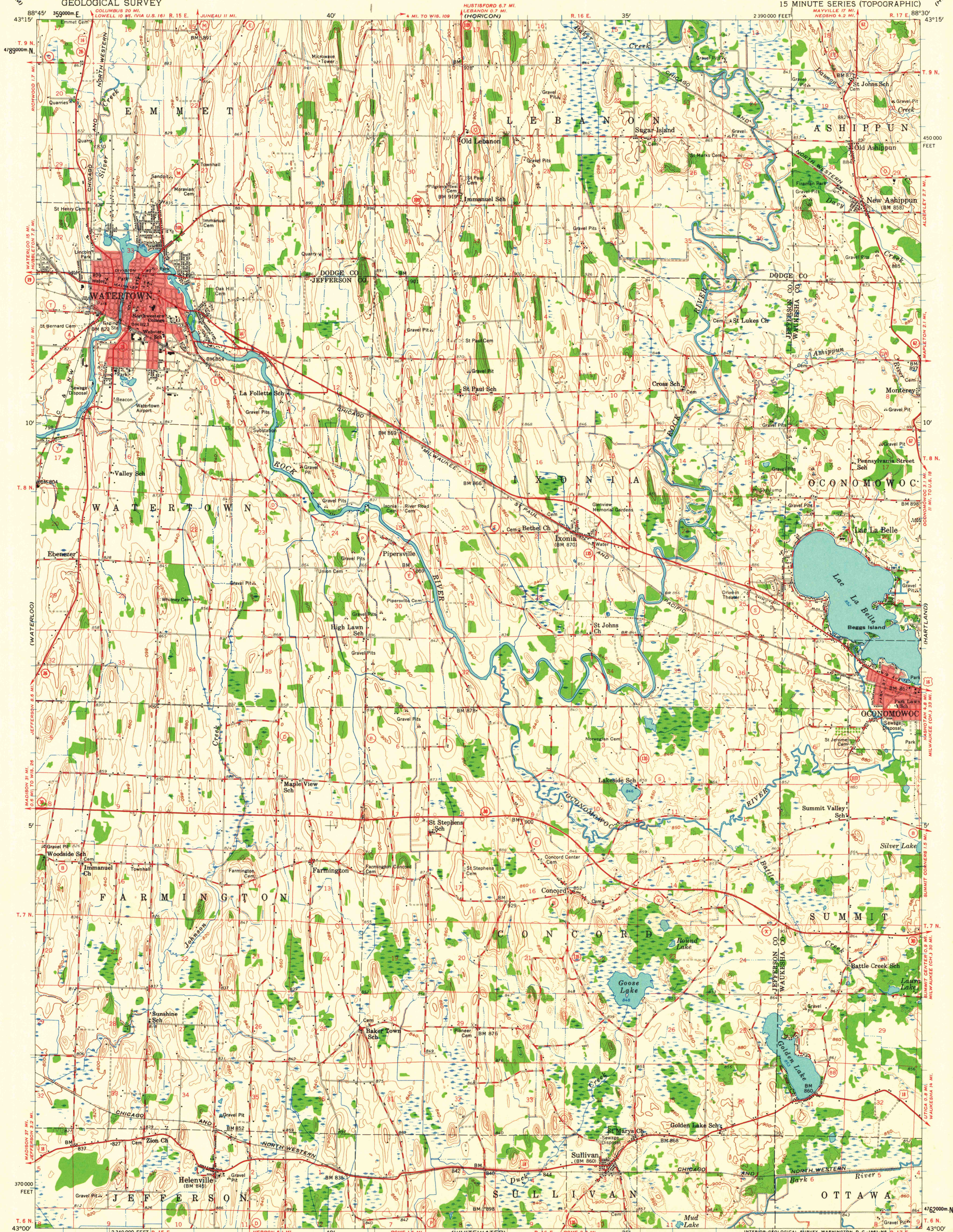
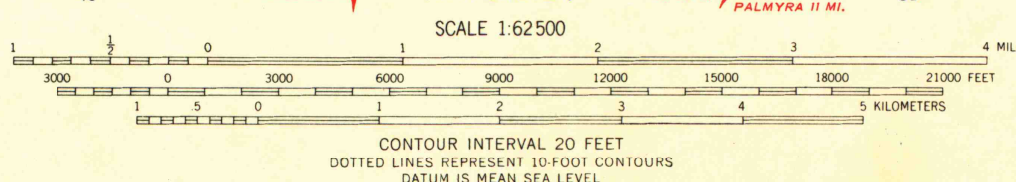


UNITED STATES  
DEPARTMENT OF THE INTERIOR  
GEOLOGICAL SURVEY

WATERTOWN QUADRANGLE  
WISCONSIN  
15 MINUTE SERIES (TOPOGRAPHIC)



Mapped, edited, and published by the Geological Survey  
Control by USGS and USC&GS  
Compiled in 1960 from 1:24 000-scale maps of Ixonia, Watertown, Helenville, and Oconomowoc West 7.5 minute quadrangles, surveyed 1959  
Topography from aerial photographs by photogrammetric methods  
Aerial photographs taken 1954-1955  
Polyconic projection. 1927 North American datum  
10,000-foot grid based on Wisconsin coordinate system, south zone  
1000-meter Universal Transverse Mercator grid ticks, zone 16, shown in blue  
Red tint indicates areas in which only landmark buildings are shown



ROAD CLASSIFICATION

Heavy-duty	Light-duty
Medium-duty	Unimproved dirt
U. S. Route	State Route



This area also covered by 1:24 000-scale maps of Ixonia, Watertown, Helenville and Oconomowoc West 7.5 minute quadrangles, surveyed 1959  
WATERTOWN, WIS.  
N4300 - W830/15  
N4300' - W8300'15

THIS MAP COMPLIES WITH NATIONAL MAP ACCURACY STANDARDS  
FOR SALE BY U. S. GEOLOGICAL SURVEY, WASHINGTON 25, D. C.  
AND BY THE WISCONSIN GEOLOGICAL AND NATURAL HISTORY SURVEY, MADISON 6, WISCONSIN  
A FOLDER DESCRIBING TOPOGRAPHIC MAPS AND SYMBOLS IS AVAILABLE ON REQUEST

1959  
Copy  
1-1