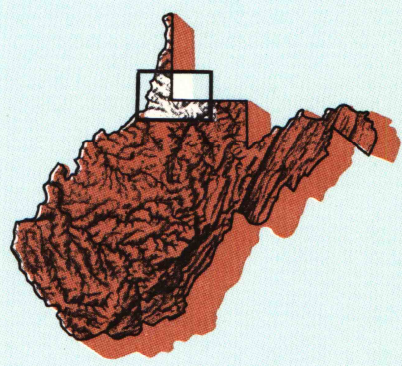


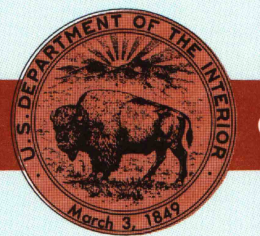
Moundsville
WEST VIRGINIA-PENNSYLVANIA-OHIO

1:100 000-scale metric
topographic map



30 X 60 MINUTE QUADRANGLE
SHOWING

- Contours and elevations in meters
- Highways, roads and other manmade structures
- Water features
- Woodland areas
- Geographic names



GEOLOGICAL SURVEY

1984

Produced by the United States Geological Survey
Compiled from USGS 1:24 000-scale topographic maps dated 1959-1979. Planimetry revised from aerial photographs taken 1980 and other source data. Revised information not field checked
Map edited 1984.

Projection and 10 000-meter grid, zone 17: Universal Transverse Mercator. 25 000-foot grid ticks based on West Virginia coordinate system, north zone, Pennsylvania coordinate system, south zone, and Ohio coordinate system, south zone.
1927 North American Datum
To place on the predicted North American Datum 1983 move the projection lines 5 meters south and 17 meters west.

There may be private inholdings within the boundaries of the National or State reservations shown on this map

CONTOUR INTERVAL 20 METERS
NATIONAL GEODETIC VERTICAL DATUM OF 1929
ELEVATIONS SHOWN TO NEAREST METER

THIS MAP COMPLIES WITH NATIONAL MAP ACCURACY STANDARDS

CONVERSION TABLE		DECLINATION DIAGRAM		ADJOINING MAPS			
Meters	Feet	Meters		1	2	3	
1	3.2808	Meters		4	5	6	
2	6.5617	Feet		7	8	9	
3	9.8425	UTM and convergence		10	11	12	
4	13.1234	(50 arcsec) magnetic		13	14	15	
5	16.4043	at center of map		16	17	18	
6	19.6852	Diagram is approximate		19	20	21	
7	22.9661			22	23	24	
8	26.2470			25	26	27	
9	29.5279			28	29	30	
10	32.8088			31	32	33	

FOR SALE BY U. S. GEOLOGICAL SURVEY
RESTON, VIRGINIA 22092

U. S. Regional
Repository Copy
DO NOT DISCARD

Topographic Map Symbols

Primary highway, hard surface	Secondary highway, hard surface	Light duty road, principal street, hard or improved surface	Other road or street, trail	Road marker: Interstate, U. S., State	Railroad: standard gauge, narrow gauge	Bridge: overpass, underpass	Tunnel: road, railroad	Built up area: locality, elevation	Airport: landing field, landing strip	National boundary	State boundary	County boundary	National or State reservation boundary	Land grant boundary	U. S. public lands survey: range, township, section	Range, township; section line: protracted	Power transmission line: pipeline	Dam: dam with lock	Cemetery: building	Windmill; water well; spring	Mine shaft; adit or cave; mine, quarry, gravel pit	Campground; picnic area; U. S. location monument	Ruin; cliff dwelling	Distorted surface: strip mine, lava; sand	Contours: index; intermediate; supplementary	Bathymetric contours: index; intermediate	Stream, lake, general; intermittent	Rapids, large and small; falls, large and small	Area to be submerged; marsh, swamp	Land subject to controlled inundation; woodland	Scrub; mangrove	Orchard; vineyard
-------------------------------	---------------------------------	---	-----------------------------	---------------------------------------	--	-----------------------------	------------------------	------------------------------------	---------------------------------------	-------------------	----------------	-----------------	--	---------------------	---	---	-----------------------------------	--------------------	--------------------	------------------------------	--	--	----------------------	---	--	---	-------------------------------------	---	------------------------------------	---	-----------------	-------------------

A pamphlet describing topographic maps is available on request

4H ROBINSON
MAP LIBRARY

FEB 27 1985

SET

University of Wisconsin
Madison

Boo6-9/8

MOUNDSVILLE, W. VA. - PA. - OHIO

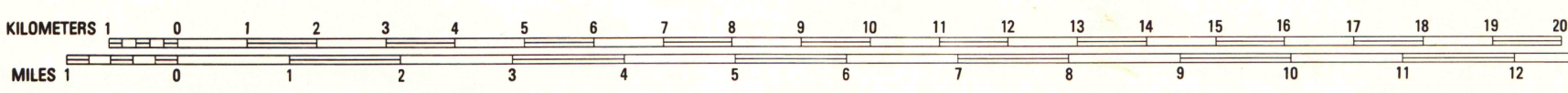
39080-EI-TM-100

1984

SCALE 1:100 000

1 CENTIMETER ON THE MAP REPRESENTS 1 KILOMETER ON THE GROUND

CONTOUR INTERVAL 20 METERS



INTERIOR-GEOLOGICAL SURVEY, RESTON, VIRGINIA-1984