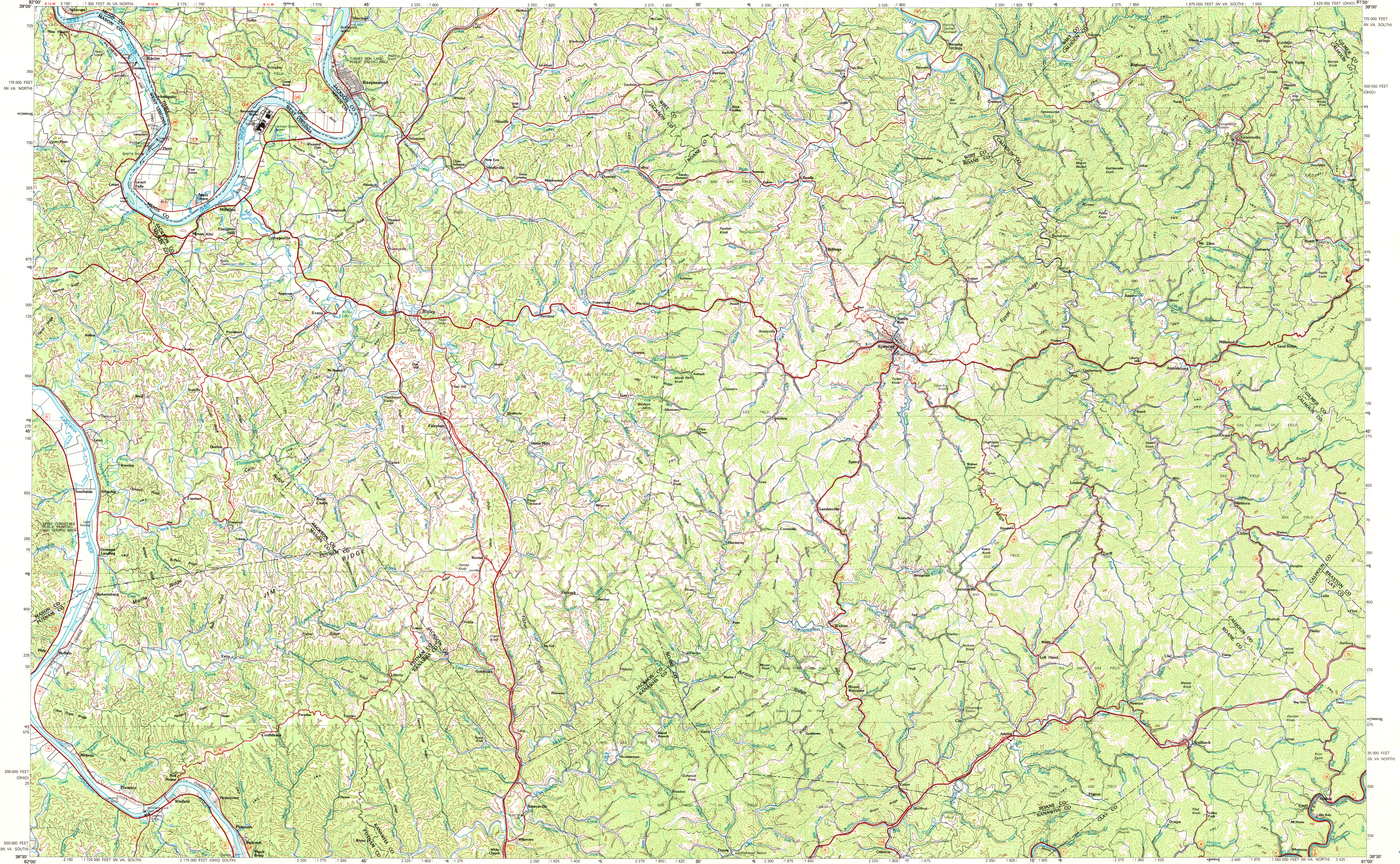


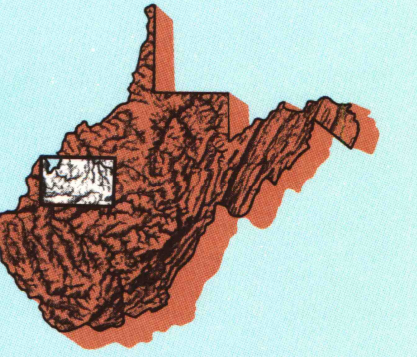
RIPLEY, WEST VIRGINIA—OHIO

30 X 60 MINUTE SERIES (TOPOGRAPHIC)



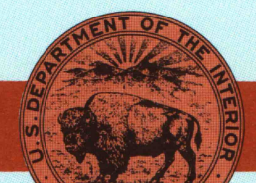
Ripley WEST VIRGINIA—OHIO

1:100 000-scale metric topographic map



30 X 60 MINUTE QUADRANGLE SHOWING

- Contours and elevations in meters
- Highways, roads and other manmade structures
- Water features
- Woodland areas
- Geographic names



GEOLOGICAL SURVEY

1984

Produced by the United States Geological Survey
 Compiled from USGS 1:24 000-scale topographic maps dated 1957-1976. Map edited 1984.
 Projection and 10 000-meter grid, zone 17: Universal Transverse Mercator
 25 000-foot grid ticks based on West Virginia coordinate system, south and north zones and Ohio coordinate system, south zone
 1927 North American Datum
 To place on the predicted North American Datum 1983 move the projection lines 6 meters south and 14 meters west
 Portions of West Virginia—Ohio boundary in dispute, not shown
 There may be private inholdings within the boundaries of the National or State reservations shown on this map

CONTOUR INTERVAL 50 METERS
 NATIONAL GEODETIC VERTICAL DATUM OF 1929
 ELEVATIONS SHOWN TO THE NEAREST METERS

THIS MAP COMPLIES WITH NATIONAL MAP ACCURACY STANDARDS

CONVERSION TABLE		DECLINATION DIAGRAM		ADJOINING MAPS		
Meters	Feet	UTM	GN	1	2	3
1	3.2808	0°	0°	1	2	3
2	6.5616	0°	0°	4	5	
3	9.8424	0°	0°			
4	13.1232	0°	0°			
5	16.4040	0°	0°			
6	19.6848	0°	0°			
7	22.9656	0°	0°			
8	26.2464	0°	0°			
9	29.5272	0°	0°			
10	32.8080	0°	0°			

To convert meters to feet multiply by 3.2808
 To convert feet to meters multiply by 0.3048

UTM grid convergence (GN) and 1984 magnetic declination (M) at center of map (Diagram as appropriate)

1	Wollaston
2	Parkersburg
3	Clarksburg
4	Ironston
5	Huntington
6	Charleston
7	Martinsburg
8	Marion

FOR SALE BY U.S. GEOLOGICAL SURVEY
 RESTON, VIRGINIA 22092

U.S. Regional Depository Copy
 DO NOT DISCARD

Topographic Map Symbols

- Primary highway, hard surface
- Secondary highway, hard surface
- Light duty road, principal street, hard or improved surface
- Other road or street, trail
- Route marker: Interstate, U. S. State
- Railroad: standard gage; narrow gage
- Bridge: overpass; underpass
- Tunnel: road; railroad
- Built up area, locality: elevation
- Airport: landing field; landing strip
- National boundary
- State boundary
- County boundary
- National or State reservation boundary
- Land grant boundary
- U. S. public lands survey: range, township; section
- Range, township; section line: protected
- Power transmission line: pipeline
- Dam: dam with lock
- Cemetery; building
- Windmill; water well; spring
- Mine shaft; edit or cave; mine, quarry; gravel pit
- Campground; picnic area; U. S. location monument
- Ruin: cliff dwelling
- Distorted surface: strip mine, lava; sand
- Contour: index; intermediate; supplementary
- Bathymetric contour: index; intermediate
- Stream, lake: perennial; intermittent
- Rapids, large and small; falls, large and small
- Area to be submerged: marsh, swamp
- Land subject to controlled inundation; woodland
- Scrub; mangrove
- Orchard; vineyard

A pamphlet describing topographic maps is available on request
 U.S. ROBINSON MAP LIBRARY

FEB 27 1995
 BOOG-9/8 SET

1984
 University of Wisconsin