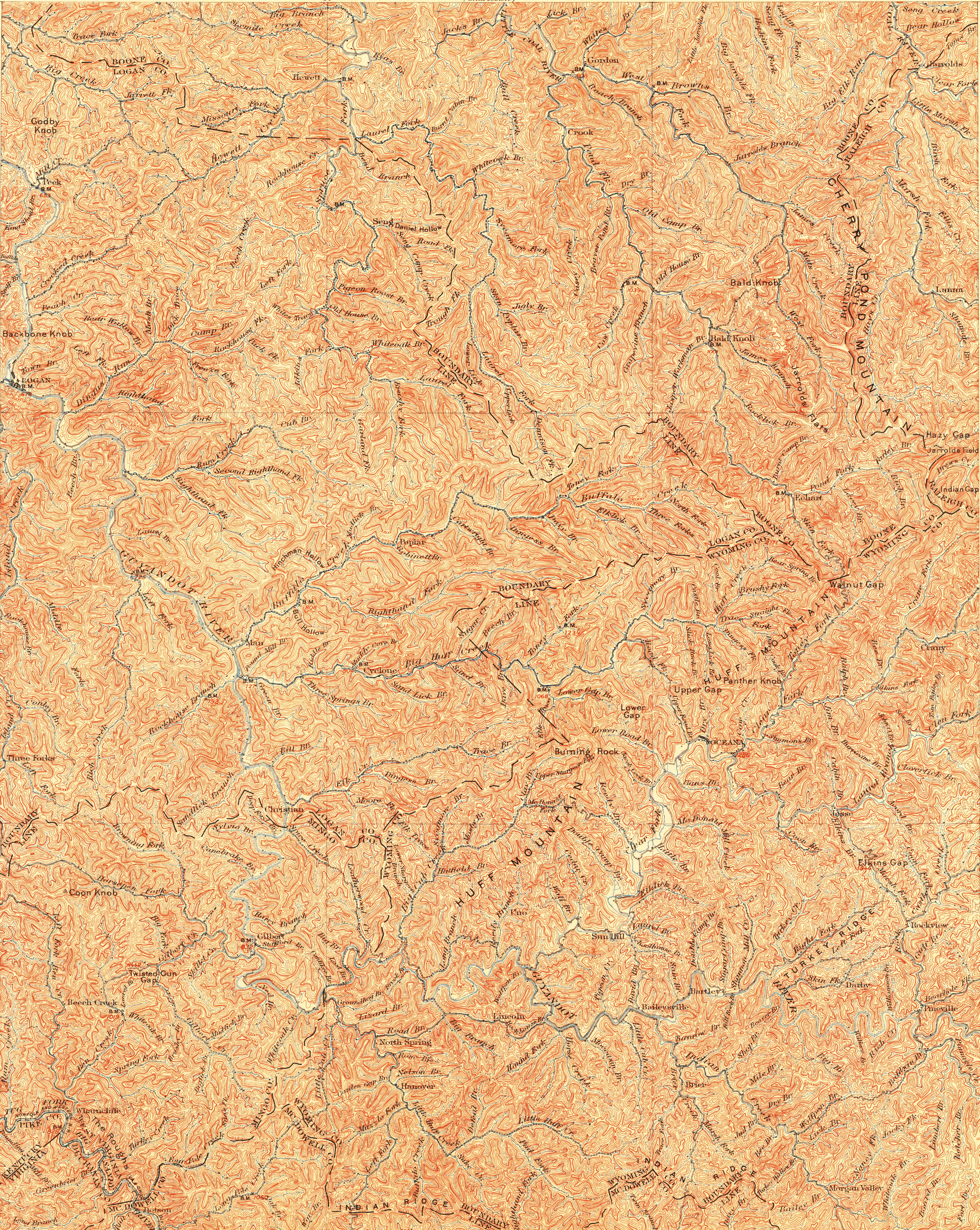


U. S. G. S.
FILE COPY
Ed. Div. Topographic Maps.

TOPOGRAPHIC SHEET

WEST VIRGINIA-VIRGINIA-KENTUCKY
OCEANA QUADRANGLE

U.S. GEOLOGICAL SURVEY
CHARLES D. WALCOTT, DIRECTOR



H.M. Wilson Geographer in charge.
Triangulation by J.H. Gore.
Topography by Hersey Munroe.
Surveyed in 1895-96.

Scale 1:25000
Miles
Kilometers
Contour interval 100 feet
Datum is mean sea level.

U.S. Geological Survey
NOV 30 1902
Ed. Div. Topographic Maps.

OCEANA

U. S. G. S.
FILE COPY
Ed. Div. Topographic Maps.

U. S. G. S.
FILE COPY
Ed. Div. Topographic Maps.

U. S. G. S.
FILE COPY
Ed. Div. Topographic Maps.