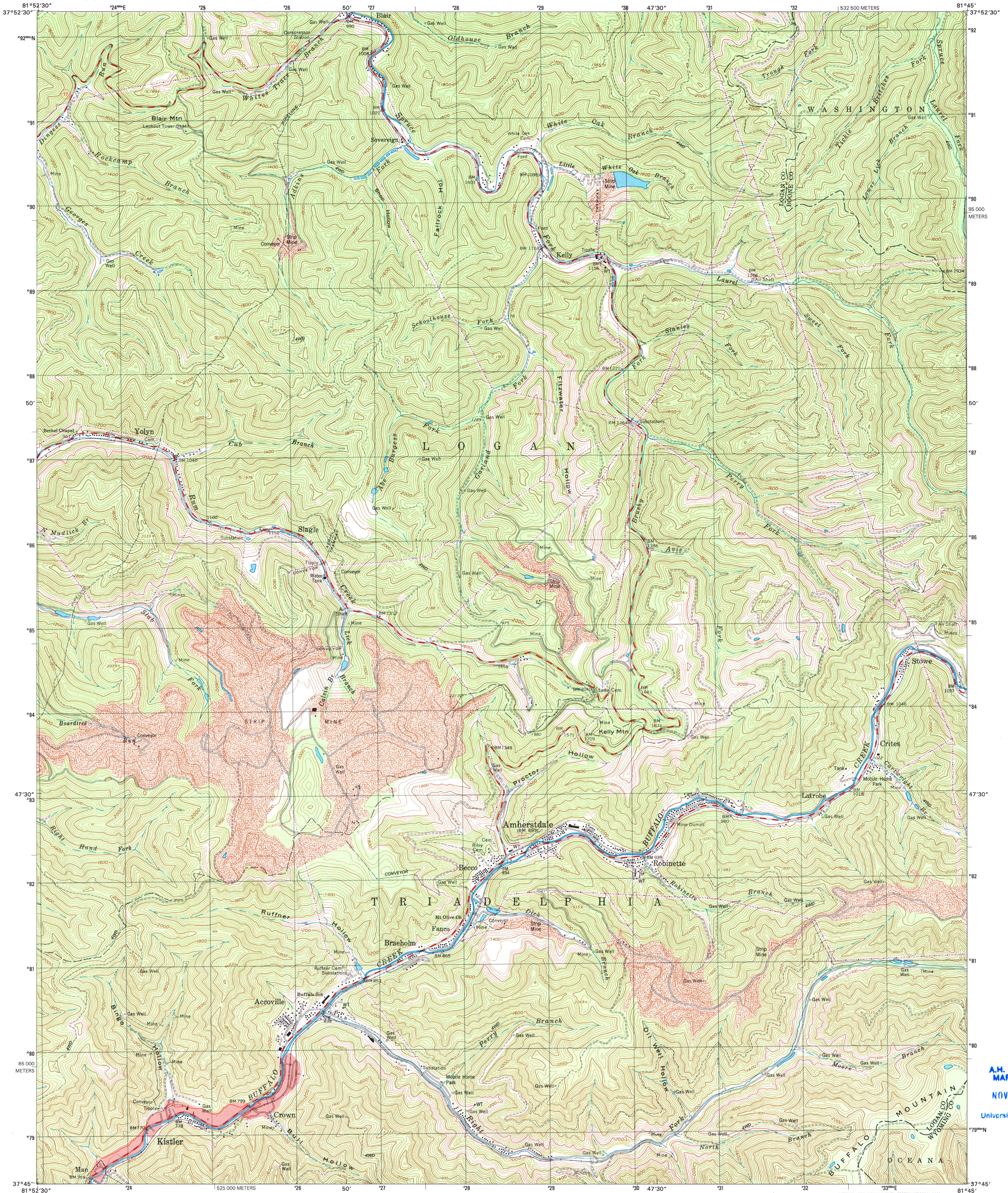


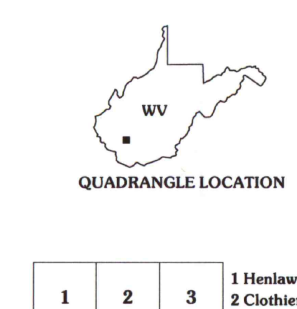
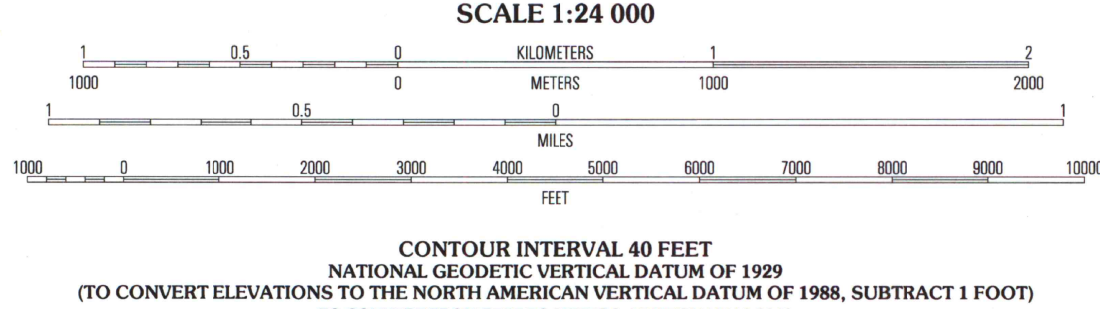
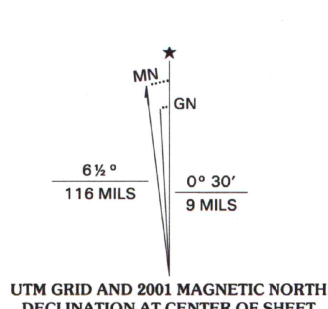


U.S. DEPARTMENT OF THE INTERIOR
U.S. GEOLOGICAL SURVEY

AMHERSTDALE QUADRANGLE
WEST VIRGINIA
7.5-MINUTE SERIES (TOPOGRAPHIC)



Produced by the United States Geological Survey
Topography compiled 1996. Planimetry derived from imagery taken 1996 and other sources. Survey control current as of 1963.
Boundaries current as of 2001.
North American Datum of 1983 (NAD 83). Projection and 1 000-meter grid: Universal Transverse Mercator, zone 17 2500-meter ticks: West Virginia Coordinate System of 1983 (south zone).
North American Datum of 1927 (NAD 27) is shown by dashed corner ticks. The values of the shift between NAD 83 and NAD 27 for 7.5-minute intersections are obtainable from National Geodetic Survey NADCON software.
Houses of worship, schools, and other labeled buildings verified 1963.



ROAD CLASSIFICATION
Primary highway
hard surface
Secondary highway
hard surface
Unimproved road
Light-duty road, hard or
improved surface
Unimproved road
Interstate Route
U.S. Route
State Route

1	2	3	1 Herkness
4	5	6	2 Clabber
7	8	9	3 Wharton
			4 Logan
			5 Lorado
			6 Man
			7 Mallory
			8 Oceana

AMHERSTDALE, WV
1996
NIMA 4659 IV SE-SERIES V854

A.M. ROBINSON
MAP LIBRARY
NOV 2 1 2002
University of Wisconsin
Madison

