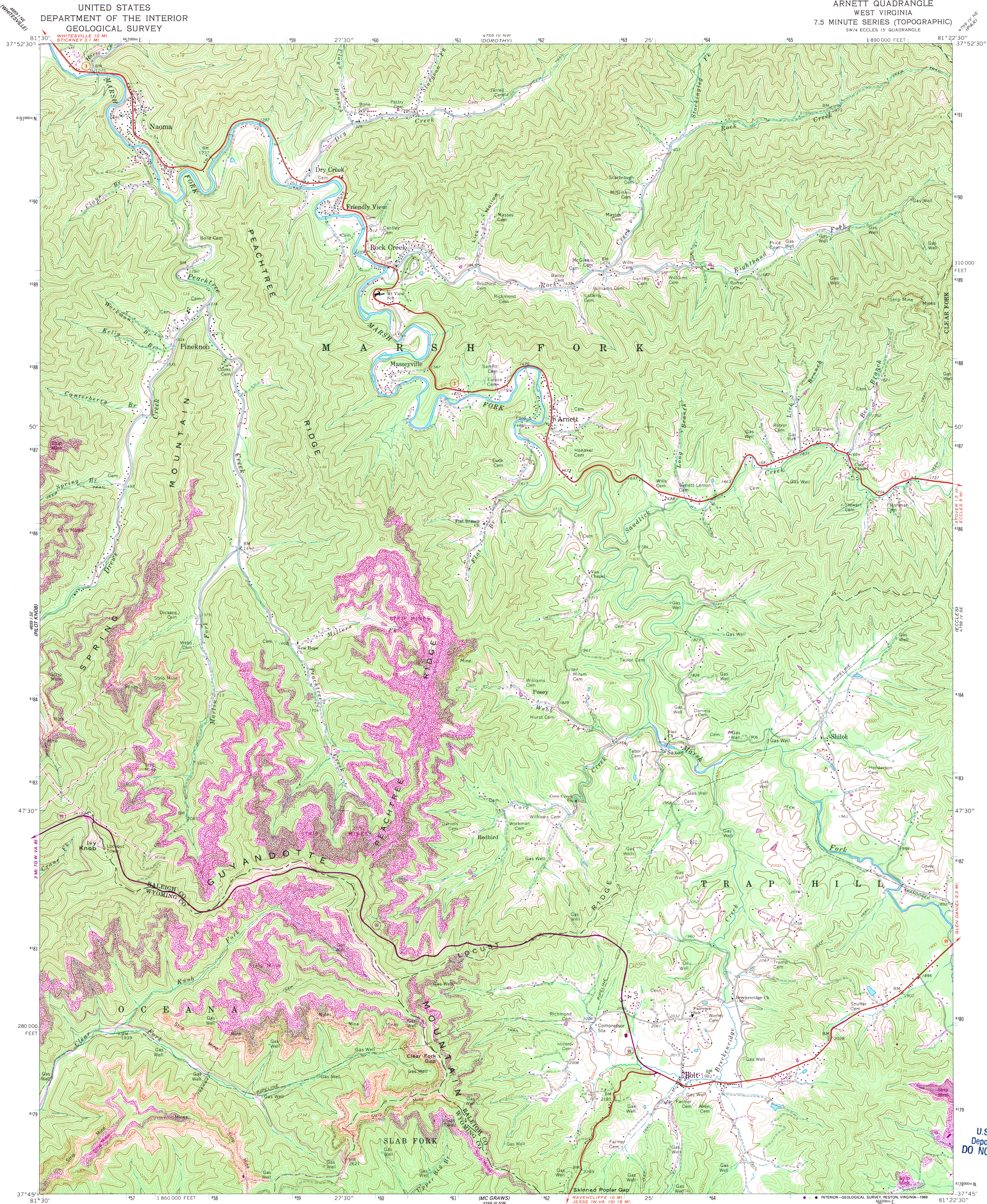


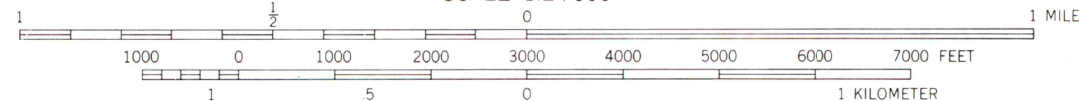
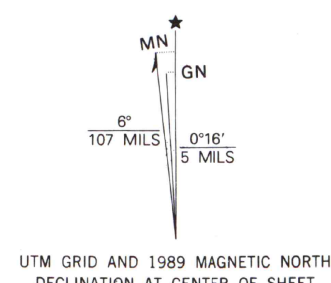
UNITED STATES  
DEPARTMENT OF THE INTERIOR  
GEOLOGICAL SURVEY

ARNETT QUADRANGLE  
WEST VIRGINIA  
7.5 MINUTE SERIES (TOPOGRAPHIC)  
SW/4 ECCLES 15' QUADRANGLE



U.S. Regional  
Depository Copy  
DO NOT DISCARD

Maped, edited, and published by the Geological Survey  
Control by USGS and USC&GS  
Topography by photogrammetric methods from aerial  
photographs taken 1963. Field checked 1964  
Polyconic projection. 1927 North American datum  
10,000-foot grid based on West Virginia coordinate system,  
south zone  
1000-meter Universal Transverse Mercator grid ticks,  
zone 17, shown in blue  
To place on the predicted North American Datum 1983  
move the projection lines 8 meters south and  
14 meters west as shown by dashed corner ticks  
Fine red dashed lines indicate selected fence and field lines where  
generally visible on aerial photographs. This information is unchecked



THIS MAP COMPLIES WITH NATIONAL MAP ACCURACY STANDARDS  
FOR SALE BY U.S. GEOLOGICAL SURVEY  
DENVER, COLORADO 80225 OR RESTON, VIRGINIA 22092  
A FOLDER DESCRIBING TOPOGRAPHIC MAPS AND SYMBOLS IS AVAILABLE ON REQUEST

Revisions shown in purple and woodland compiled in cooperation with  
State of West Virginia agencies from aerial photographs taken 1986  
and other sources. This information not field checked  
Map edited 1989

ROAD CLASSIFICATION  
Heavy-duty ———— Light-duty ————  
Unimproved dirt ————  
State Route ————

ARNETT, W. VA.  
SW/4 ECCLES 15' QUADRANGLE  
37081-G4-TF-024  
1964  
PHOTOREVISED 1989  
DMA 4759 IV SW-SERIES V854

A.H. ROBINSON  
MAP LIBRARY  
MAY 28 1990  
University of Wisconsin  
Madison