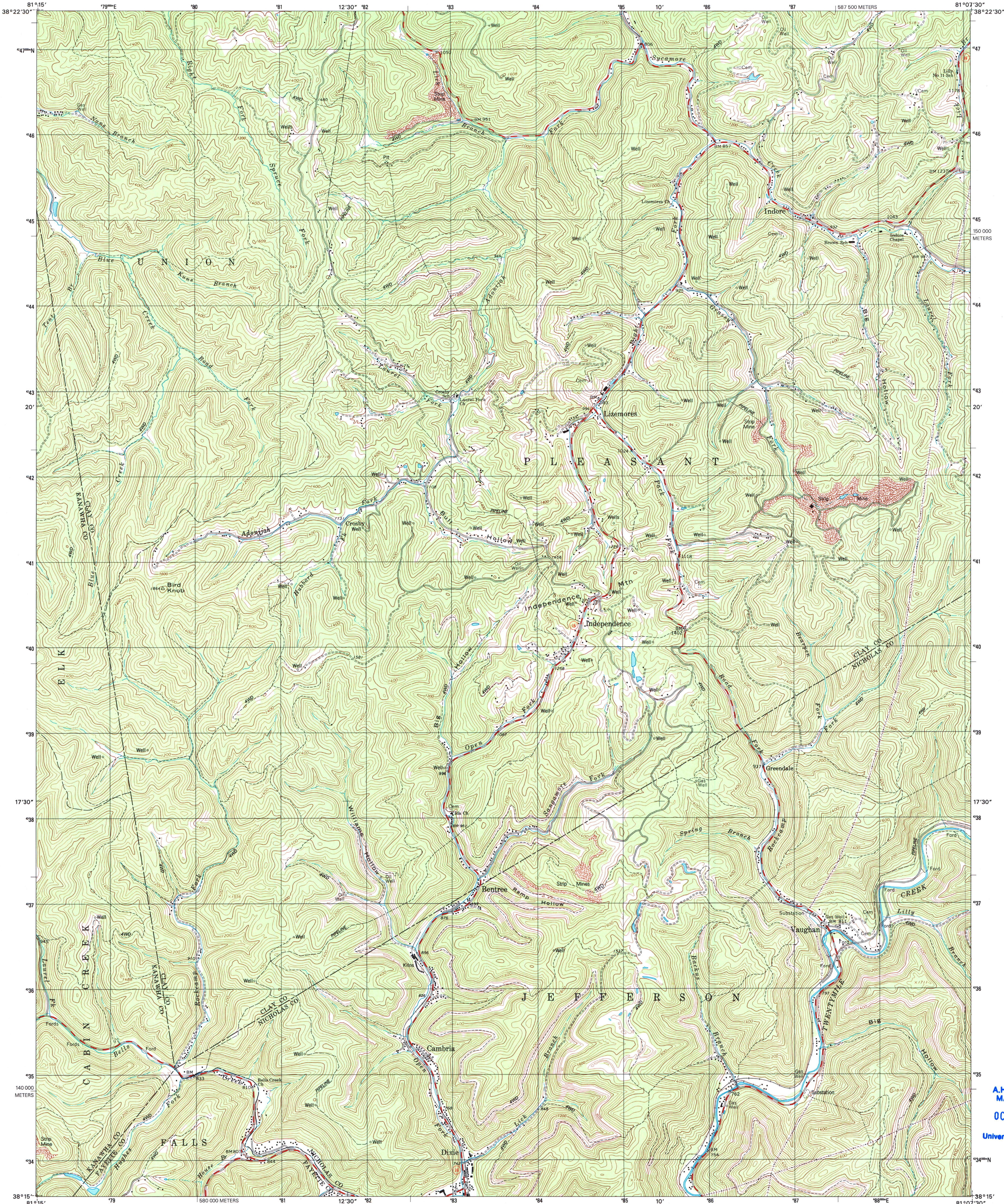


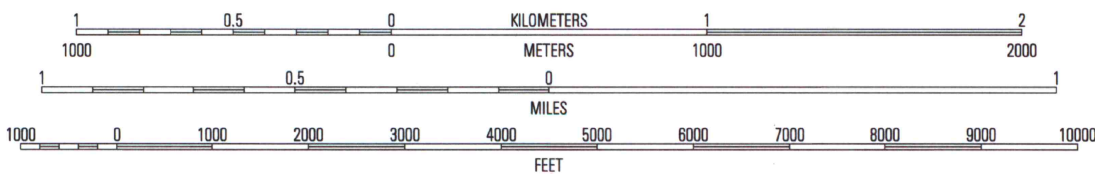
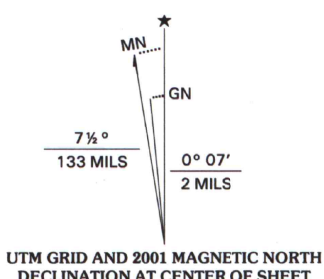


U.S. DEPARTMENT OF THE INTERIOR
U.S. GEOLOGICAL SURVEY

BENTREE QUADRANGLE
WEST VIRGINIA
7.5-MINUTE SERIES (TOPOGRAPHIC)



Produced by the United States Geological Survey
Topography compiled 1996. Planimetry derived from imagery taken 1996 and other sources. Survey control current as of 1967. Boundaries current as of 2001.
North American Datum of 1983 (NAD 83). Projection and 1 000-meter grid: Universal Transverse Mercator, zone 17 2 500-meter ticks: West Virginia Coordinate System of 1983 (south zone).
North American Datum of 1927 (NAD 27) is shown by dashed corner ticks. The values of the shift between NAD 83 and NAD 27 for 7.5-minute intersections are obtainable from National Geodetic Survey NADCON software.
Houses of worship, schools, and other labeled buildings verified 1967.



CONTOUR INTERVAL 40 FEET
NATIONAL GEODETIC VERTICAL DATUM OF 1999
(TO CONVERT ELEVATIONS TO THE NORTH AMERICAN VERTICAL DATUM OF 1988, SUBTRACT 1 FOOT)
TO CONVERT FROM FEET TO METERS, MULTIPLY BY 0.3048



QUADRANGLE LOCATION

ROAD CLASSIFICATION
Primary highway
hard surface
Secondary highway
hard surface
Light-duty road, hard or
improved surface
Unimproved road
Interstate Route U.S. Route State Route

1	2	3
4	5	6
7	8	9

U.S. Regional
Depository Copy
DO NOT DISCARD

BENTREE, WV
1996

NIMA 4760 I SW-SERIES V854

A.H. ROBINSON
MAP LIBRARY
OCT 30 2002
University of Wisconsin
Madison

