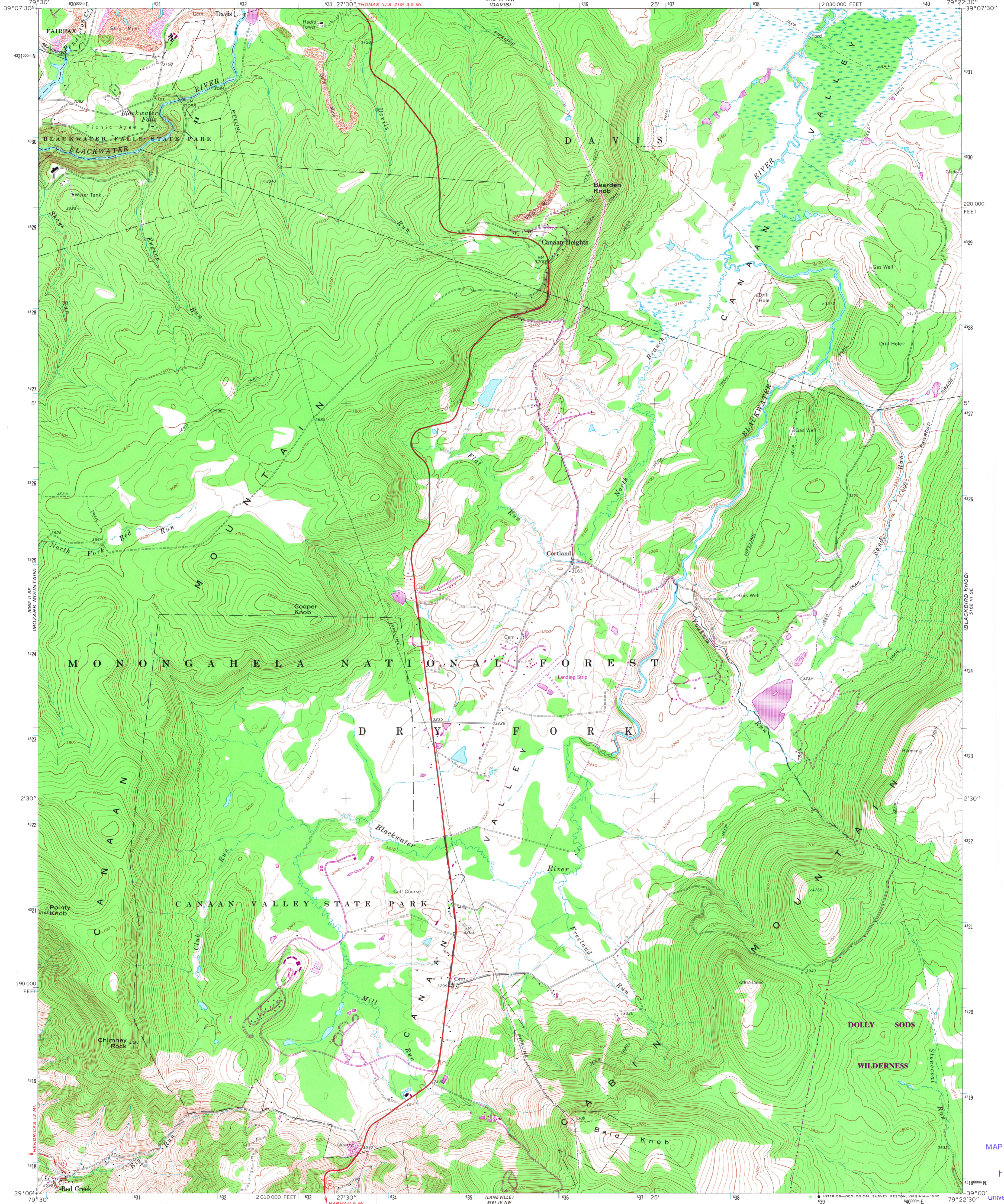


5162 III NW (DAVIS)

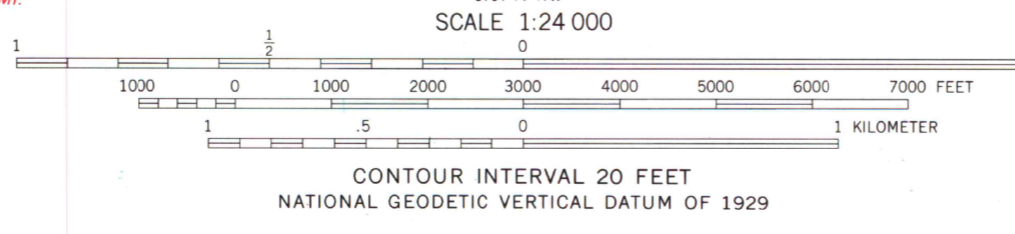
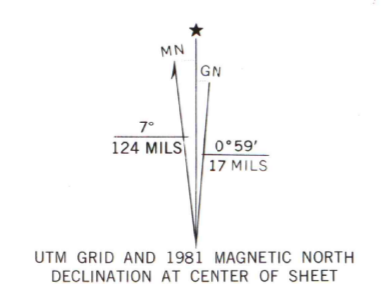
UNITED STATES
DEPARTMENT OF THE INTERIOR
GEOLOGICAL SURVEY

BLACKWATER FALLS QUADRANGLE
WEST VIRGINIA—TUCKER CO.
7.5 MINUTE SERIES (TOPOGRAPHIC)
SW/4 DAVIS 15' QUADRANGLE

5162 III NE (MOUNTAIN STORM LAKE)



Mapped, edited, and published by the Geological Survey
Control by USGS and NOS/NOAA
Topography by photogrammetric methods from aerial photographs taken 1966. Field checked 1968
Polyconic projection, 10,000-foot grid ticks based on West Virginia coordinate system north zone, 1000-meter Universal Transverse Mercator grid ticks zone 17, shown in blue. 1927 North American Datum To place on the predicted North American Datum 1983 move the projection lines 7 meters south and 20 meters west as shown by dashed corner ticks
Fine red dashed lines indicate selected fence and field lines where generally visible on aerial photographs. This information is unchecked
There may be private inholdings within the boundaries of the National or State reservations shown on this map



ROAD CLASSIFICATION

Primary highway, hard surface	Light-duty road, hard or improved surface
Secondary highway, hard surface	Unimproved road
Interstate Route	U.S. Route
	State Route



BLACKWATER FALLS, W. VA.
SW/4 DAVIS 15' QUADRANGLE
N3900—W7922.5/7.5

THIS MAP COMPLIES WITH NATIONAL MAP ACCURACY STANDARDS FOR SALE BY U.S. GEOLOGICAL SURVEY RESTON, VIRGINIA 22092 A FOLDER DESCRIBING TOPOGRAPHIC MAPS AND SYMBOLS IS AVAILABLE ON REQUEST

Revisions shown in purple and woodland compiled in cooperation with the State of West Virginia agencies from aerial photographs taken 1978 and other sources This information not field checked. Map edited 1981

1968
PHOTOREVISED 1981
DMA 5162 III SW—SERIES V854

MAP AND AIR PHOTO LIBRARY
Feb 25 1983
University of Wisconsin
Madison