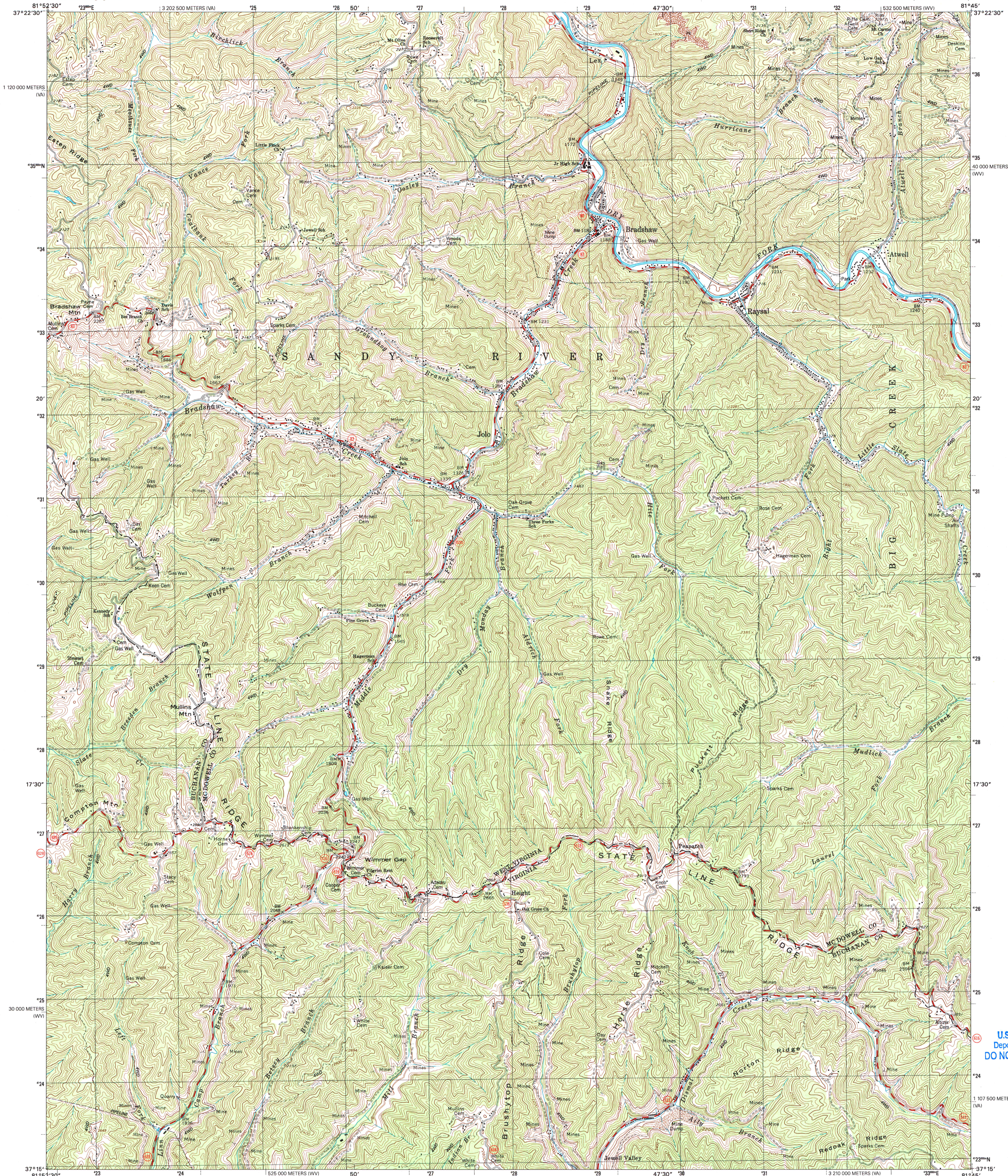




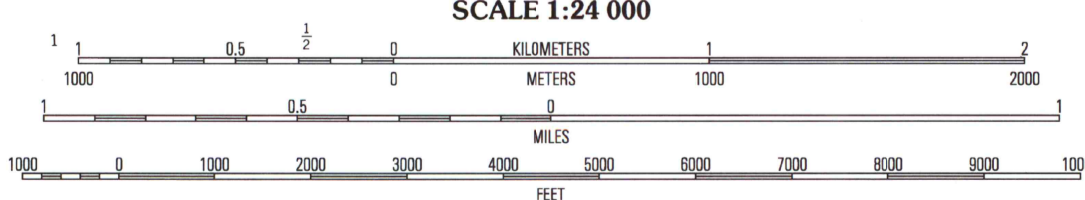
U.S. DEPARTMENT OF THE INTERIOR
U.S. GEOLOGICAL SURVEY

BRADSHAW QUADRANGLE
WEST VIRGINIA-VIRGINIA
7.5-MINUTE SERIES (TOPOGRAPHIC)



Produced by the United States Geological Survey
Topography compiled 1996. Planimetry derived from imagery taken 1996 and other sources. Survey control current as of 1964. Boundaries current as of 2002.
North American Datum of 1983 (NAD 83). Projection and 1 000-meter grid: Universal Transverse Mercator, zone 17. 2 500-meter ticks: West Virginia Coordinate System of 1983 (south zone) and Virginia Coordinate System of 1983 (south zone).
North American Datum of 1927 (NAD 27) is shown by dashed corner ticks. The values of the shift between NAD 83 and NAD 27 for 7.5-minute intersections are obtainable from National Geodetic Survey NADCON software.
Houses of worship, schools, and other labeled buildings verified 1964.

UTM GRID AND 2003 MAGNETIC NORTH DECLINATION AT CENTER OF SHEET



CONTOUR INTERVAL 40 FEET
NATIONAL GEODETIC VERTICAL DATUM OF 1929
TO CONVERT FROM FEET TO METERS, MULTIPLY BY 0.3048



ROAD CLASSIFICATION
Primary highway
hard surface
Secondary highway
hard surface
Unimproved road
Interstate Route
U.S. Route
State Route

1	2	3	1 Panther
			2 Jager
			3 Day
4		5	4 Patterson
			5 War
			6 Ken Mountain
6	7	8	7 Jewell Ridge
			8 Amonte

ARTHUR H. ROBINSON MAP LIBRARY
University of Wisconsin-Madison
BRADSHAW, WV-VA
1996
NIMA 4658 IV SE-SERIES V854

U.S. Regional
Depository Copy
DO NOT DISCARD

