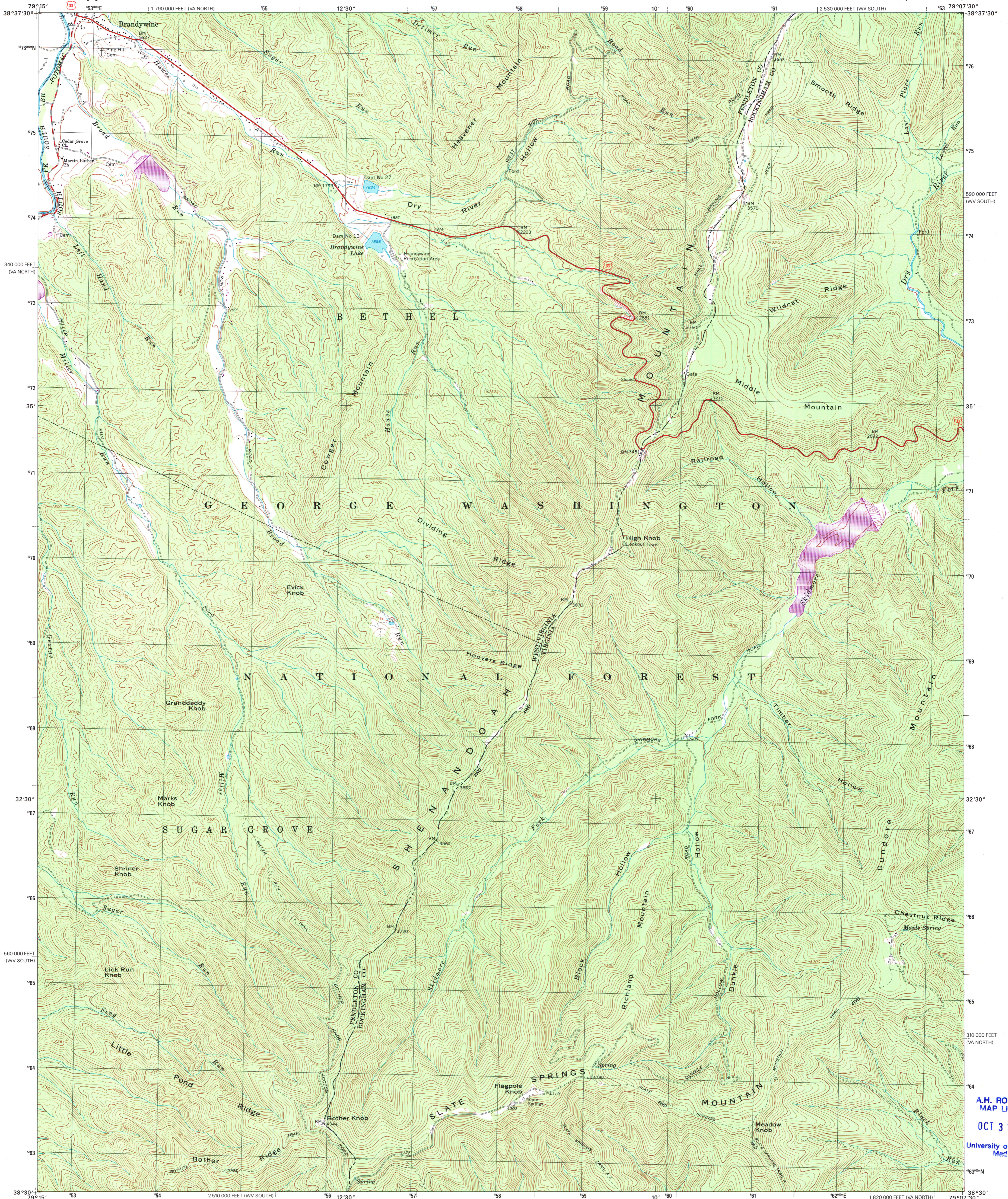




U.S. DEPARTMENT OF THE INTERIOR
U.S. GEOLOGICAL SURVEY

BRANDYWINE QUADRANGLE
WEST VIRGINIA-VIRGINIA
7.5-MINUTE SERIES (TOPOGRAPHIC)



Produced by the United States Geological Survey

Topography compiled 1965. Planimetry derived from imagery taken 1977 and other sources. Photoinspected using imagery dated 1999; no major culture or drainage changes observed. Survey control current as of 1969. Boundaries verified 2001

North American Datum of 1927 (NAD 27)

Projection: West Virginia coordinate system, south zone (Lambert conformal conic)

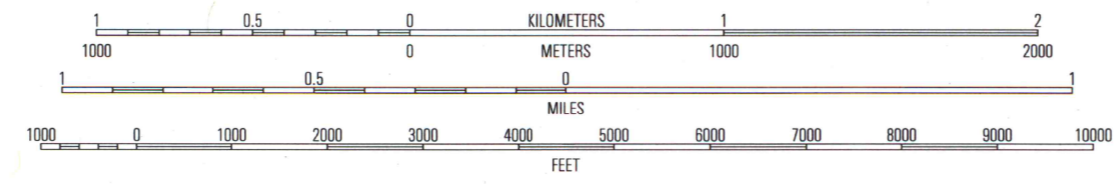
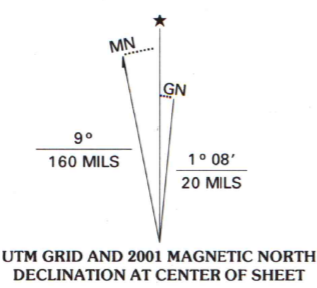
10 000-foot ticks: West Virginia coordinate system, south zone and Virginia coordinate system, north zone

1000-meter Universal Transverse Mercator grid, zone 17

North American Datum of 1983 (NAD 83) is shown by dashed corner ticks. The values of the shift between NAD 27 and NAD 83 for 7.5-minute intersections are obtainable from National Geodetic Survey NADCON software

There may be private inholdings within the boundaries of the National or State reservations shown on this map

Information shown in purple may not meet USGS content standards and may conflict with previously mapped contours



CONTOUR INTERVAL 40 FEET
NATIONAL GEODETIC VERTICAL DATUM OF 1929
TO CONVERT FROM FEET TO METERS, MULTIPLY BY 0.3048



QUADRANGLE LOCATION

ROAD CLASSIFICATION

Primary highway hard surface	Light-duty road, hard or improved surface
Secondary highway hard surface	Unimproved road
Interstate Route	U.S. Route
	State Route

1	2	3	1 Franklin
			2 Fort Seybert
			3 Cow Knob
			4 Sugar Grove
4		5	5 Rawley Springs
			6 Palo Alto
			7 Reddish Knob
			8 Briery Branch
6	7	8	

BRANDYWINE, WV-VA
1999

NIMA 5161 II SW-SERIES V854

A.H. ROBINSON
MAP LIBRARY
OCT 31 2001
University of Wisconsin
Madison



U.S. Regional
Depository Copy
DO NOT DISCARD

THIS MAP COMPLIES WITH NATIONAL MAP ACCURACY STANDARDS
FOR SALE BY U.S. GEOLOGICAL SURVEY, P.O. BOX 25286, DENVER, COLORADO 80225
AND VIRGINIA DIVISION OF MINERAL RESOURCES, CHARLOTTEVILLE, VIRGINIA 22903
A FOLDER DESCRIBING TOPOGRAPHIC MAPS AND SYMBOLS IS AVAILABLE ON REQUEST

