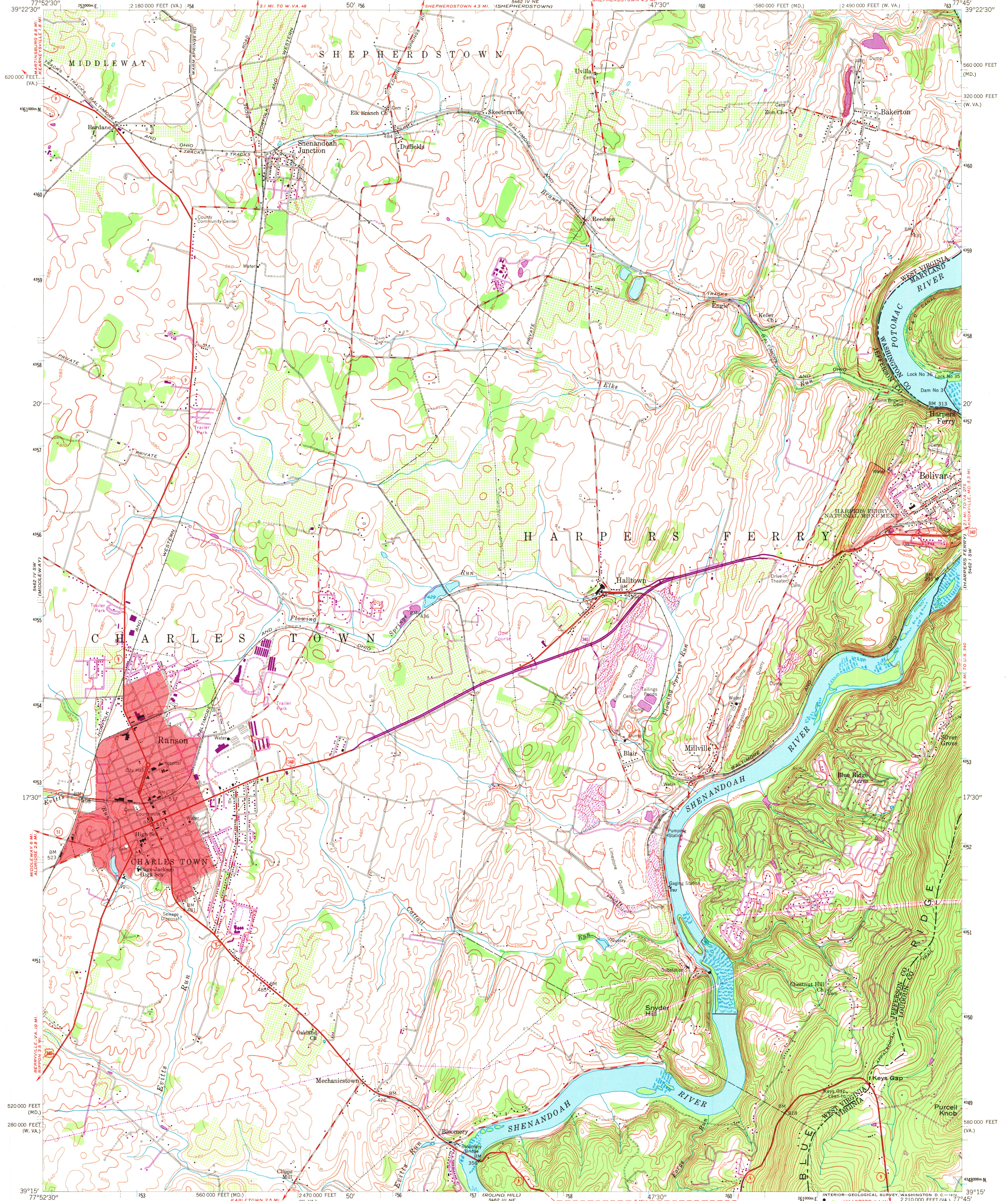


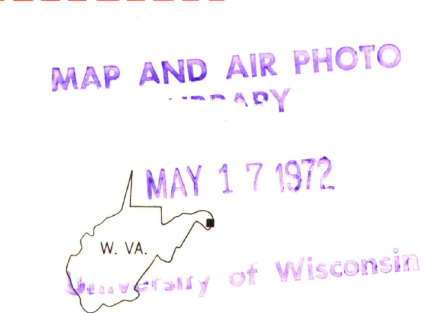
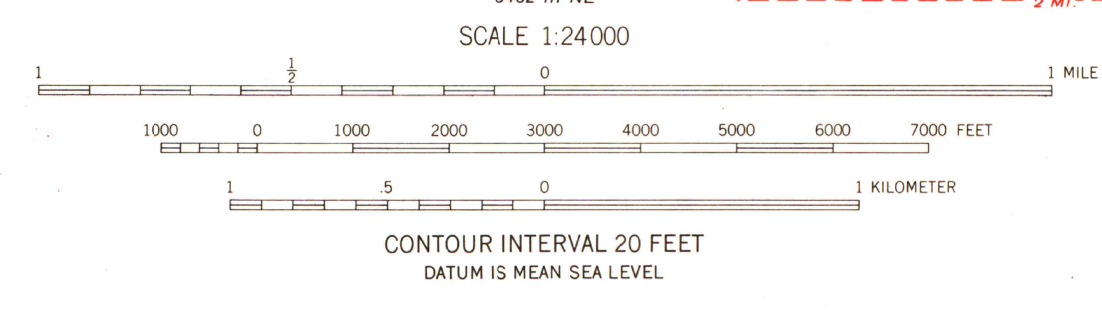
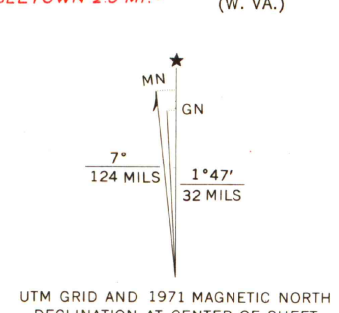
UNITED STATES
DEPARTMENT OF THE INTERIOR
GEOLOGICAL SURVEY

UNITED STATES
DEPARTMENT OF THE ARMY
CORPS OF ENGINEERS

CHARLES TOWN QUADRANGLE
WEST VIRGINIA—VIRGINIA—MARYLAND
7.5 MINUTE SERIES (TOPOGRAPHIC)
SE/4 MARTINSBURG 15' QUADRANGLE



Maped by the Army Map Service
Edited and published by the Geological Survey
Control by USGS, USC&GS, and USSCS
Topography from aerial photographs by photogrammetric
methods. Aerial photographs taken 1943. Field check 1944
Culture revised by the Geological Survey 1955
Polyconic projection. 1927 North American datum
10,000-foot grids based on West Virginia and Virginia
coordinate systems, north zones, and Maryland coordinate
system
Red tint indicates area in which only
landmark buildings are shown
Unchecked elevations are shown in brown
1000-meter Universal Transverse Mercator grid ticks,
zone 18, shown in blue



ROAD CLASSIFICATION
Heavy-duty ——— Light-duty ———
Medium-duty ——— Unimproved dirt ———
U.S. Route ——— State Route ———
1955
PHOTOREVISED 1971
AMS 5462 IV SE—SERIES V854

THIS MAP COMPLIES WITH NATIONAL MAP ACCURACY STANDARDS
FOR SALE BY U.S. GEOLOGICAL SURVEY, WASHINGTON, D.C. 20242
A FOLDER DESCRIBING TOPOGRAPHIC MAPS AND SYMBOLS IS AVAILABLE ON REQUEST

Revisions shown in purple compiled by the Geological Survey from
aerial photographs taken 1971. This information not field checked