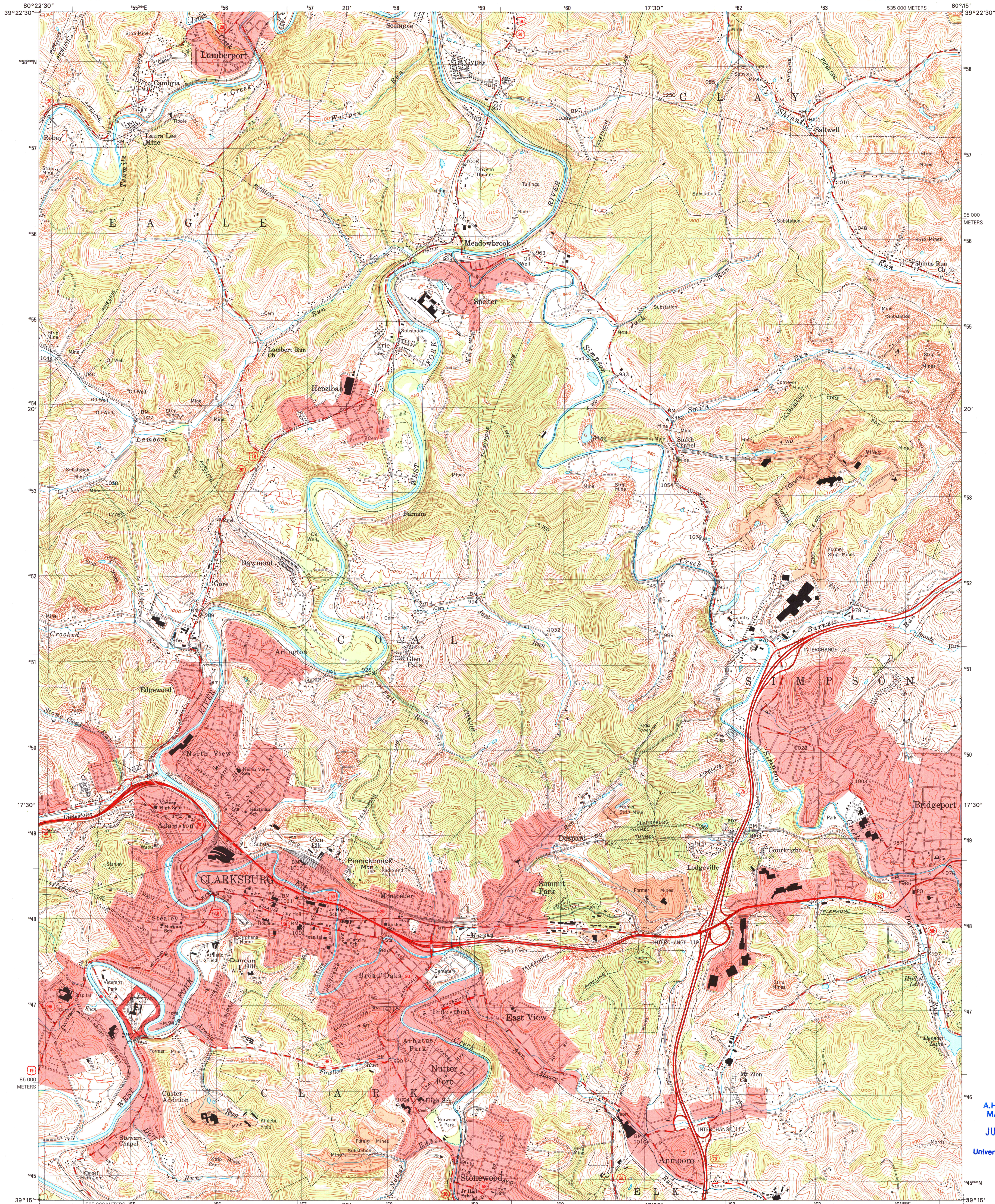




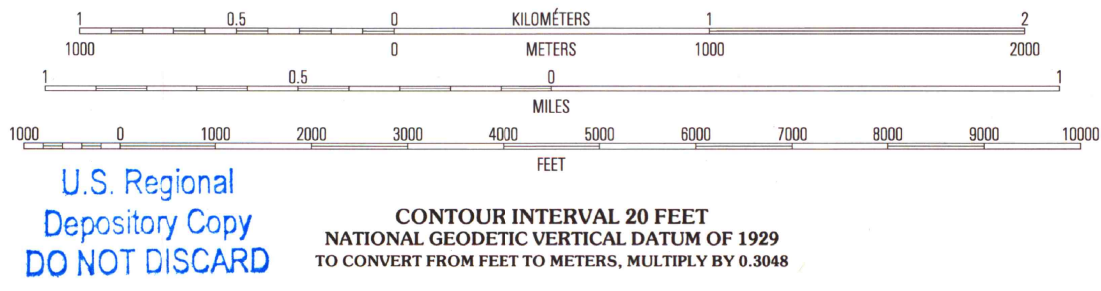
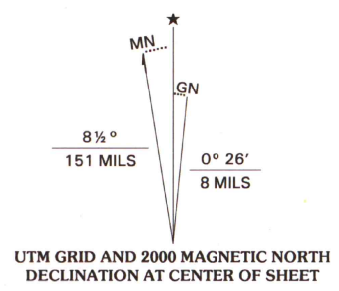
U.S. DEPARTMENT OF THE INTERIOR
U.S. GEOLOGICAL SURVEY

CLARKSBURG QUADRANGLE
WEST VIRGINIA-HARRISON CO.
7.5-MINUTE SERIES (TOPOGRAPHIC)



A.H. ROBINSON
MAP LIBRARY
JUN 29 2001
University of Wisconsin
Madison

Produced by the United States Geological Survey
Topography compiled 1955. Planimetry derived from imagery
taken 1956 and other sources. Survey control current as of 1958
North American Datum of 1983 (NAD 83). Projection and
1 000-meter grid: Universal Transverse Mercator, zone 17
2 500-meter ticks: West Virginia Coordinate System of 1983 (north zone)
North American Datum of 1927 (NAD 27) is shown by dashed
corner ticks. The values of the shift between NAD 83 and
NAD 27 for 7.5-minute intersections are obtainable from
National Geodetic Survey NADCON software.
There may be private inholdings within the boundaries of the
National or State reservations shown on this map.
Landmark buildings verified 1958.



U.S. Regional
Depository Copy
DO NOT DISCARD

CONTOUR INTERVAL 20 FEET
NATIONAL GEODETIC VERTICAL DATUM OF 1929
TO CONVERT FROM FEET TO METERS, MULTIPLY BY 0.3048



ADJOINING 7.5' QUADRANGLE NAMES

1	2	3
4	5	6
7	8	9

1 Wallace
2 Shinnston
3 Fairmont West
4 Wolf Summit
5 Rosemont
6 West Milford
7 Mount Clare
8 Brownstown

ROAD CLASSIFICATION
Primary highway
hard surface
Secondary highway
hard surface
Light-duty road, hard or
improved surface
Unimproved road
Interstate Route
U.S. Route
State Route

CLARKSBURG, WV
1996
NIMA 4962 IV SE-SERIES V854

THIS MAP COMPLIES WITH NATIONAL MAP ACCURACY STANDARDS
FOR SALE BY U.S. GEOLOGICAL SURVEY, P.O. BOX 25286, DENVER, COLORADO 80225
A FOLDER DESCRIBING TOPOGRAPHIC MAPS AND SYMBOLS IS AVAILABLE ON REQUEST

