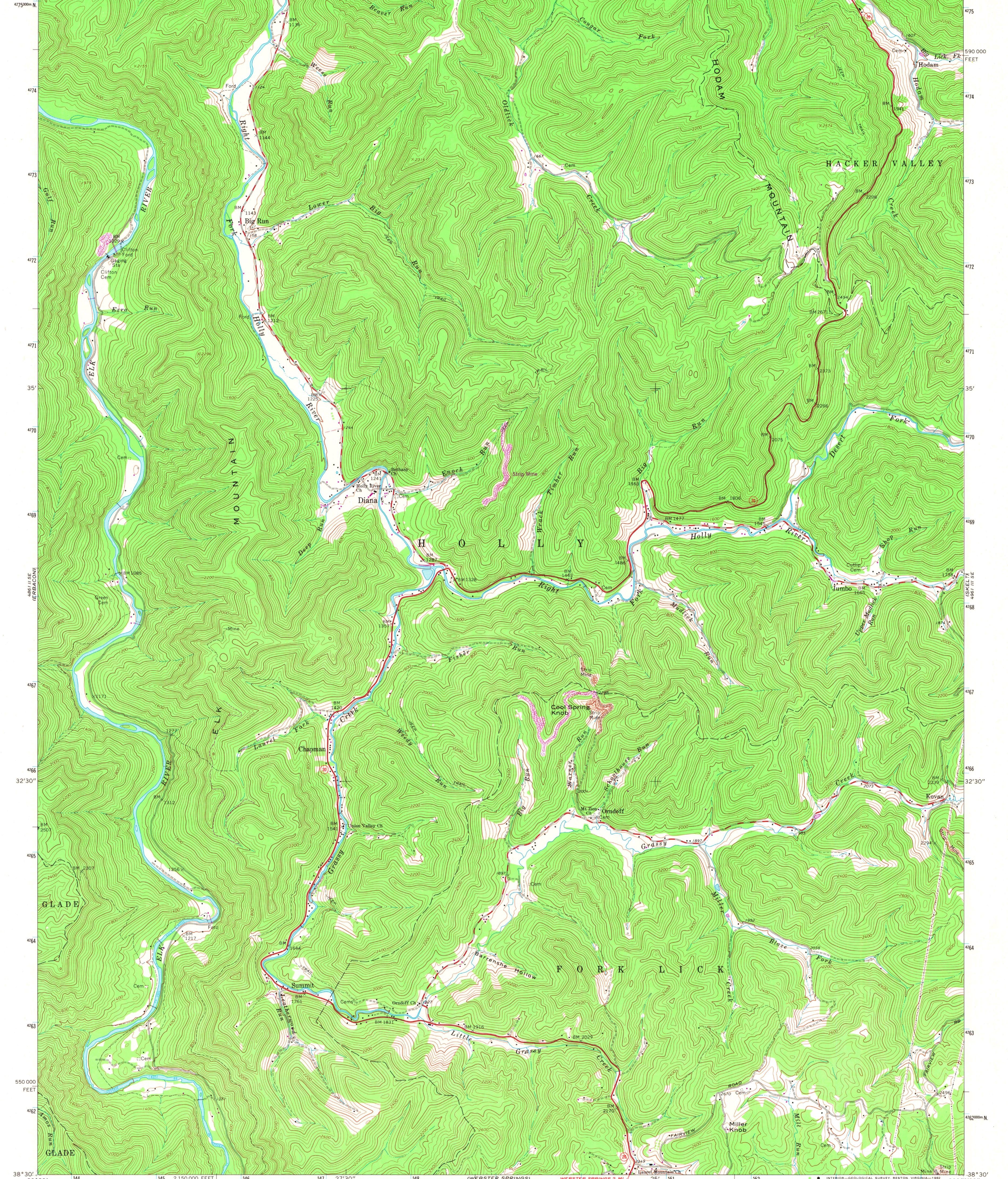


80° 30' 38° 37' 30" 144 145 146 147 27' 30" 148 149 150 25' 151 2 170 000 FEET 152 153 154 80° 22' 30" 38° 37' 30"



Mapped, edited, and published by the Geological Survey

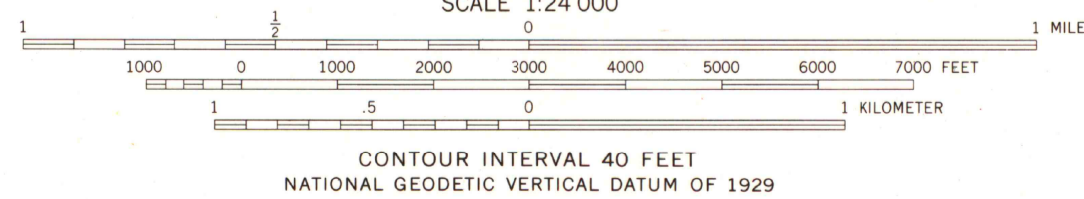
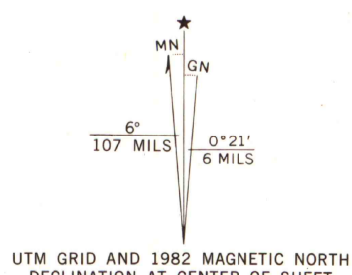
Control by USGS and NOS/NOAA

Topography by photogrammetric methods from aerial photographs taken 1963. Field checked 1967

Polycyclic projection. 10,000-foot grid ticks based on West Virginia coordinate system, south zone. 1000-meter Universal Transverse Mercator grid ticks, zone 17, shown in blue. 1927 North American Datum. To place on the predicted North American Datum 1983 move the projection lines 7 meters south and 18 meters west as shown by dashed corner ticks

Fine red dashed lines indicate selected fence and field lines where generally visible on aerial photographs. This information is unchecked

Revisions shown in purple and woodland compiled in cooperation with State of West Virginia agencies from aerial photographs taken 1979 and other sources. This information not field checked
Map edited 1982



ROAD CLASSIFICATION

Heavy-duty	Light-duty
Medium-duty	Unimproved dirt
State Route	

MAP AND AIR PHOTO LIBRARY

FEB 25 1983

University of Wisconsin

DIANA, W. VA.
SW/4 HACKER VALLEY 15' QUADRANGLE
N3830—W8022.5/7.5

1967
PHOTOREVISED 1982
DMA 4961 III SW—SERIES V854

THIS MAP COMPLIES WITH NATIONAL MAP ACCURACY STANDARDS FOR SALE BY U. S. GEOLOGICAL SURVEY, RESTON, VIRGINIA 22092 A FOLDER DESCRIBING TOPOGRAPHIC MAPS AND SYMBOLS IS AVAILABLE ON REQUEST