

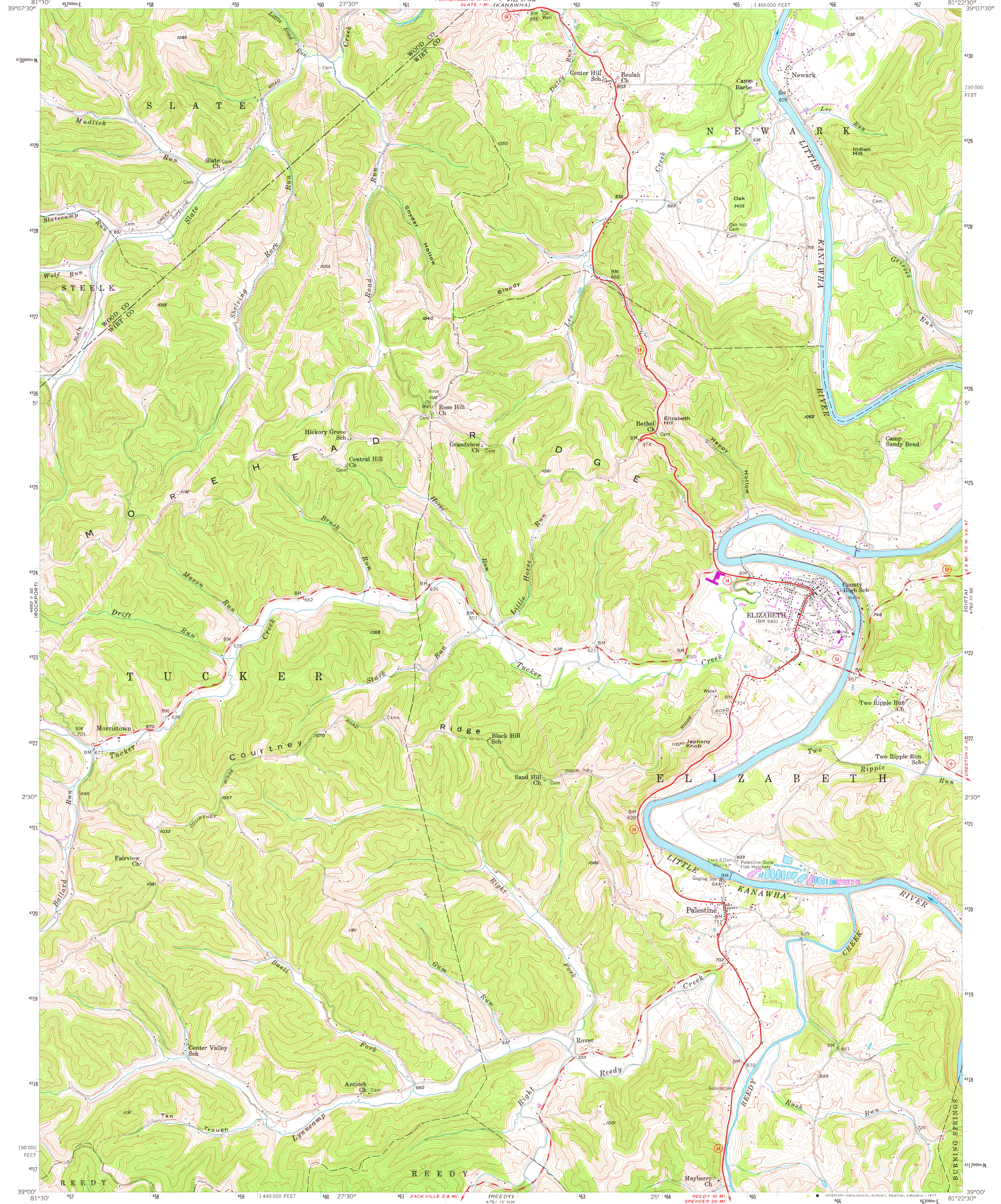
(SOUTH)  
PARKERSBURG  
461 1 NE

UNITED STATES  
DEPARTMENT OF THE INTERIOR  
GEOLOGICAL SURVEY

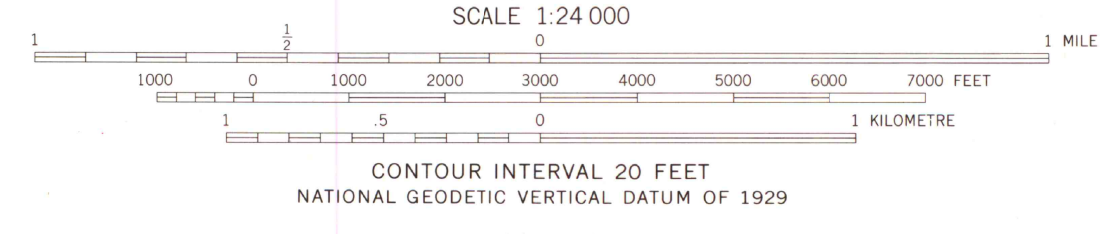
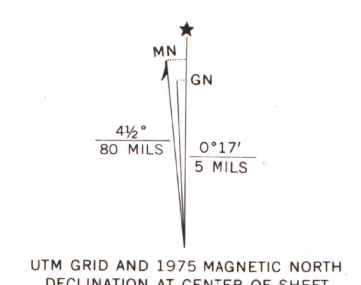
STATE OF WEST VIRGINIA  
REPRESENTED BY THE  
STATE OF WEST VIRGINIA GEOLOGICAL SURVEY  
AND OTHER STATE AGENCIES

ELIZABETH QUADRANGLE  
WEST VIRGINIA  
7.5 MINUTE SERIES (TOPOGRAPHIC)  
SW/4 ELIZABETH 15' QUADRANGLE

4762 III NW  
(PE TOLEUM)



Mapped, edited, and published by the Geological Survey  
Control by USGS, USC&GS, and USSCS  
Topography from aerial photographs by ER-55  
Aerial photographs taken 1956. Field check 1957  
Polyconic projection. 1927 North American datum  
10,000-foot grid based on West Virginia coordinate system,  
north zone  
1000-metre Universal Transverse Mercator grid ticks,  
zone 17, shown in blue  
Fine red dashed lines indicate selected fence and field lines  
visible on aerial photographs. This information is unchecked  
Unchecked elevations are shown in brown  
Revisions shown in purple compiled from aerial photographs  
taken 1975. This information not field checked



ROAD CLASSIFICATION  
Heavy-duty ——— Light-duty ———  
Medium-duty ——— Unimproved dirt ———  
○ State Route

MAP AND AIR PHOTO  
LIBRARY  
JUN 3 1977  
University of Wisconsin  
Madison

ELIZABETH, W. VA.  
SW/4 ELIZABETH 15' QUADRANGLE  
N 3900 — W 8122.5/7.5  
1957  
PHOTOREVISED 1975  
AMS 4762 III SW — SERIES V 854

THIS MAP COMPLIES WITH NATIONAL MAP ACCURACY STANDARDS  
FOR SALE BY U. S. GEOLOGICAL SURVEY, RESTON, VIRGINIA 22092  
A FOLDER DESCRIBING TOPOGRAPHIC MAPS AND SYMBOLS IS AVAILABLE ON REQUEST

LIVERPOOL  
461 1 NE

BURNING SPRINGS  
4762 III NW