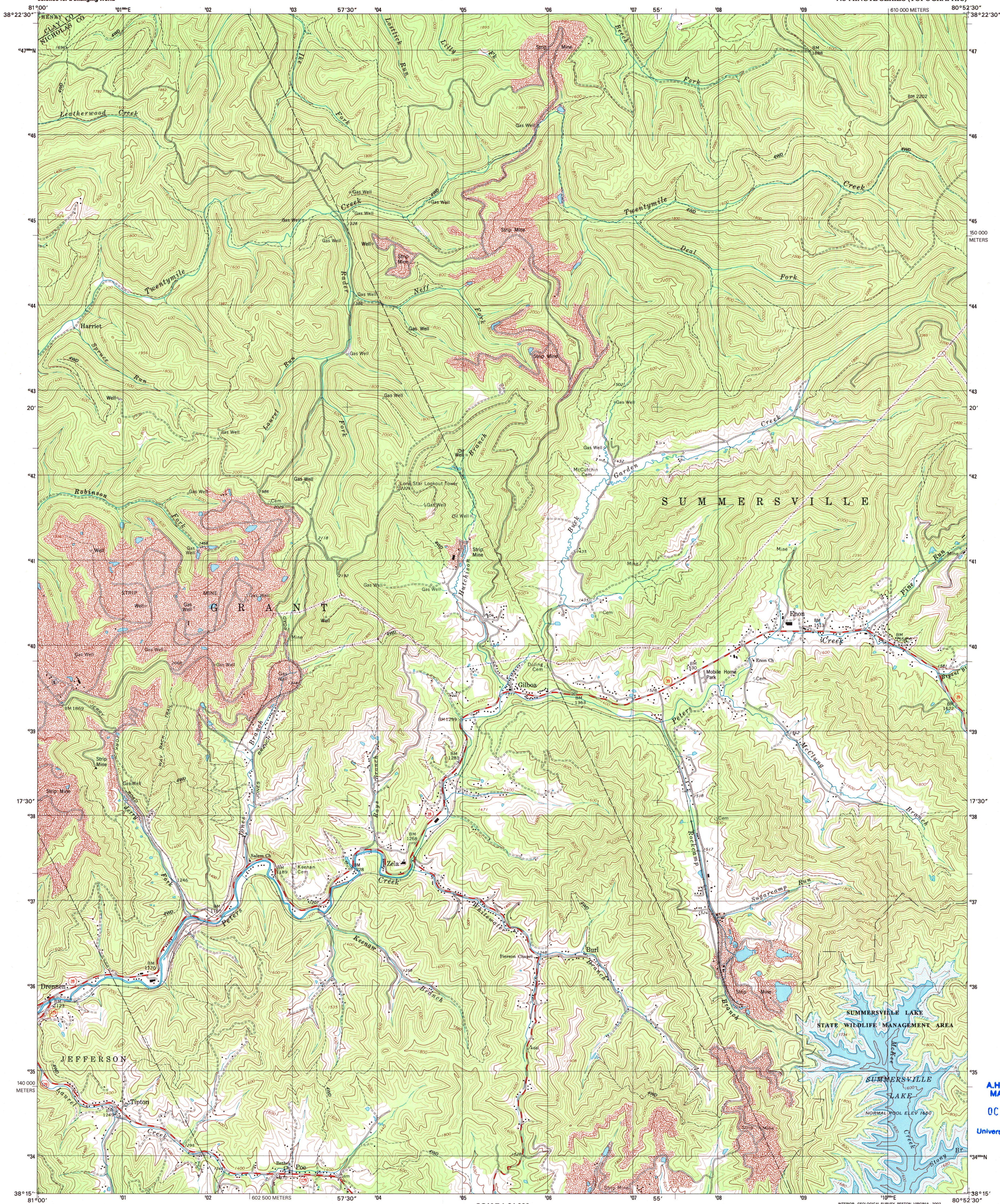




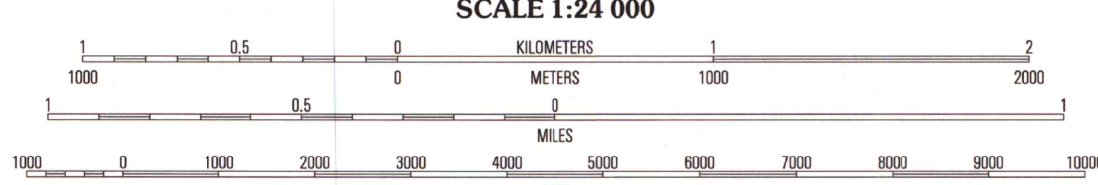
U.S. DEPARTMENT OF THE INTERIOR  
U.S. GEOLOGICAL SURVEY

GILBOA QUADRANGLE  
WEST VIRGINIA  
7.5-MINUTE SERIES (TOPOGRAPHIC)



Produced by the United States Geological Survey  
Topography compiled 1996. Planimetry derived from imagery taken 1996 and other sources. Survey control current as of 1967. Boundaries current as of 2001.  
North American Datum of 1983 (NAD 83). Projection and 1000-meter grid: Universal Transverse Mercator, zone 17. 2500-meter ticks: West Virginia Coordinate System of 1983 (south zone).  
North American Datum of 1927 (NAD 27) is shown by dashed corner ticks. The values of the shift between NAD 83 and NAD 27 for 7.5-minute intersections are obtainable from National Geodetic Survey NADCON software.  
There may be private inholdings within the boundaries of the National or State reservations shown on this map.  
Areas covered by dashed light-blue pattern are subject to controlled inundation.  
Houses of worship, schools, and other labeled buildings verified 1967.

7.5°  
133 MILS  
0° 02'  
1 MIL  
UTM GRID AND 2001 MAGNETIC NORTH DECLINATION AT CENTER OF SHEET



SCALE 1:24 000  
CONTOUR INTERVAL 40 FEET  
NATIONAL GEODETIC VERTICAL DATUM OF 1929  
(TO CONVERT ELEVATIONS TO THE NORTH AMERICAN VERTICAL DATUM OF 1988, SUBTRACT 1 FOOT)  
TO CONVERT FROM FEET TO METERS, MULTIPLY BY 0.3048



QUADRANGLE LOCATION

ROAD CLASSIFICATION  
Primary highway  
hard surface .....  
Secondary highway  
hard surface .....  
Light-duty road, hard or  
improved surface .....  
Unimproved road .....  
Interstate Route  
U.S. Route  
State Route

1	2	3	1 Clay
			2 Sandale
			3 Wilder
4		5	4 Lockwood
			5 Summersville
			6 Axtell
6	7	8	7 Summersville Dam
			8 Mount Nebo

GILBOA, WV  
1996  
NIMA 4860 IV SW-SERIES V854

A.H. ROBINSON  
MAP LIBRARY  
OCT 02 2002  
University of Wisconsin  
Madison

U.S. Regional  
Depository Copy  
DO NOT DISCARD

