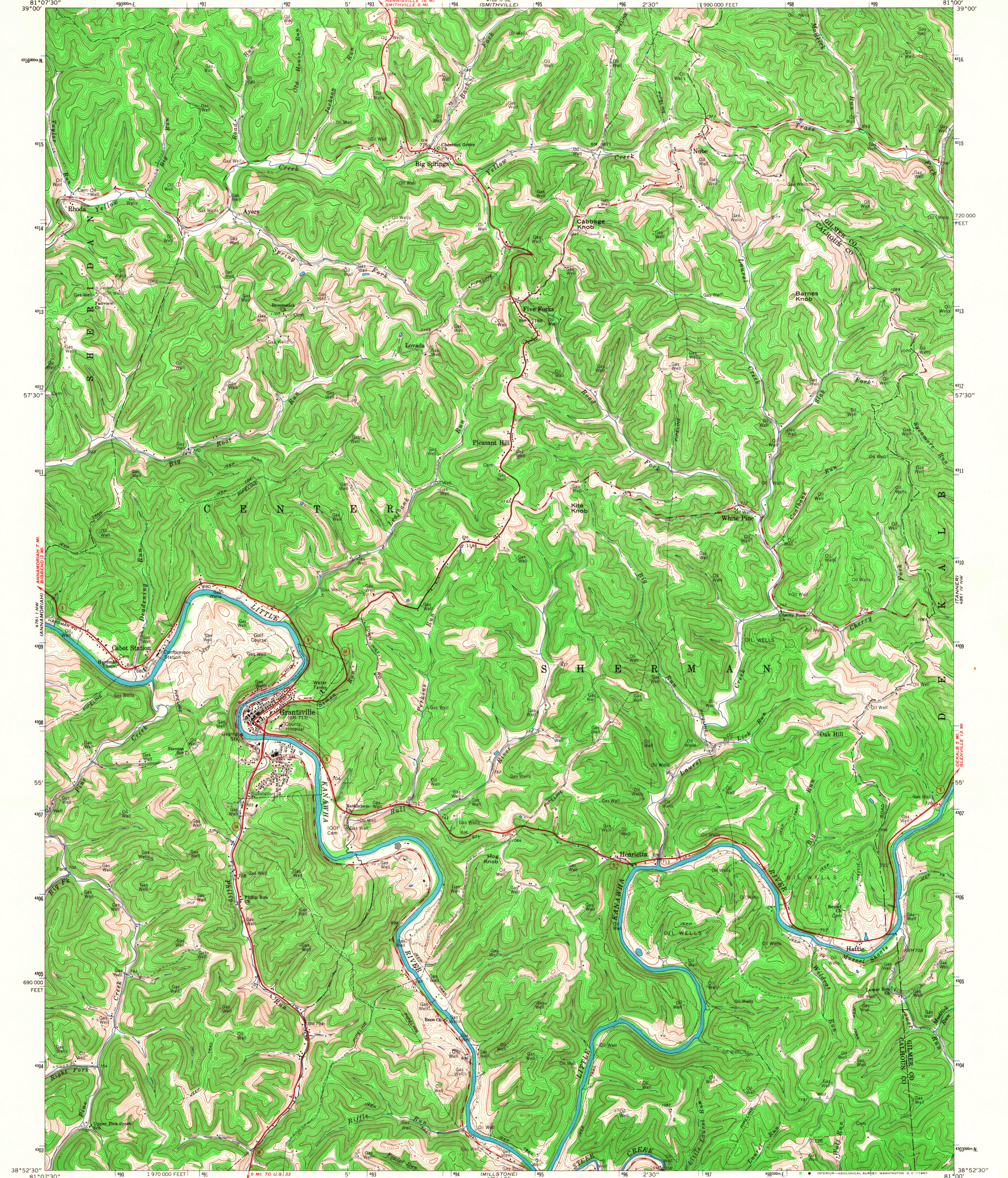
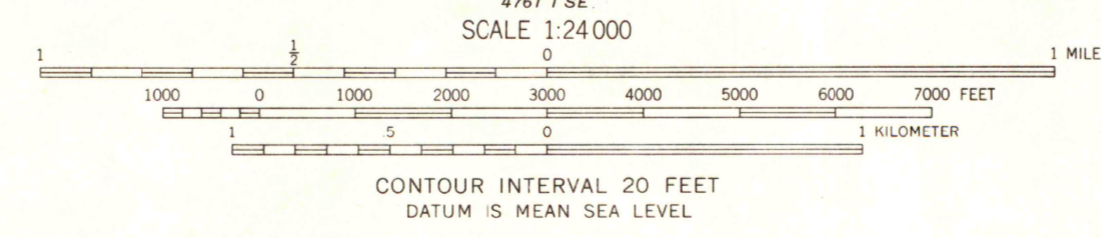
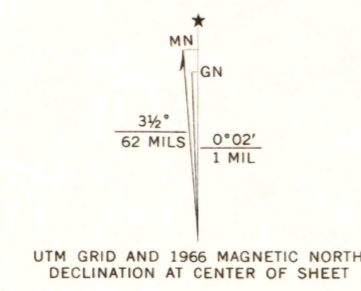


81°07'30"
39°00'

81°00'
39°00'



Maped, edited, and published by the Geological Survey
Control by USGS and US&GS
Topography by photogrammetric methods from aerial photographs
taken 1963. Field checked 1966
Polyconic projection. 1927 North American datum
10,000-foot grid based on West Virginia coordinate system,
south zone
1000-meter Universal Transverse Mercator grid ticks, zone 17,
shown in blue
Fine red dashed lines indicate selected fence and field lines where
generally visible on aerial photographs. This information is unchecked



MAP AND AIR PHOTO LIBRARY
University of Wisconsin

ROAD CLASSIFICATION

Heavy-duty	Light-duty
Medium-duty	Unimproved dirt
State Route	



GRANTSVILLE, W. VA.
NE/4 ARNOLDSBURG 15' QUADRANGLE
N3852.5-WB100/7.5

1966
AMS 4761 I NE-SERIES V854

THIS MAP COMPLIES WITH NATIONAL MAP ACCURACY STANDARDS
FOR SALE BY U. S. GEOLOGICAL SURVEY, WASHINGTON, D. C. 20242
A FOLDER DESCRIBING TOPOGRAPHIC MAPS AND SYMBOLS IS AVAILABLE ON REQUEST