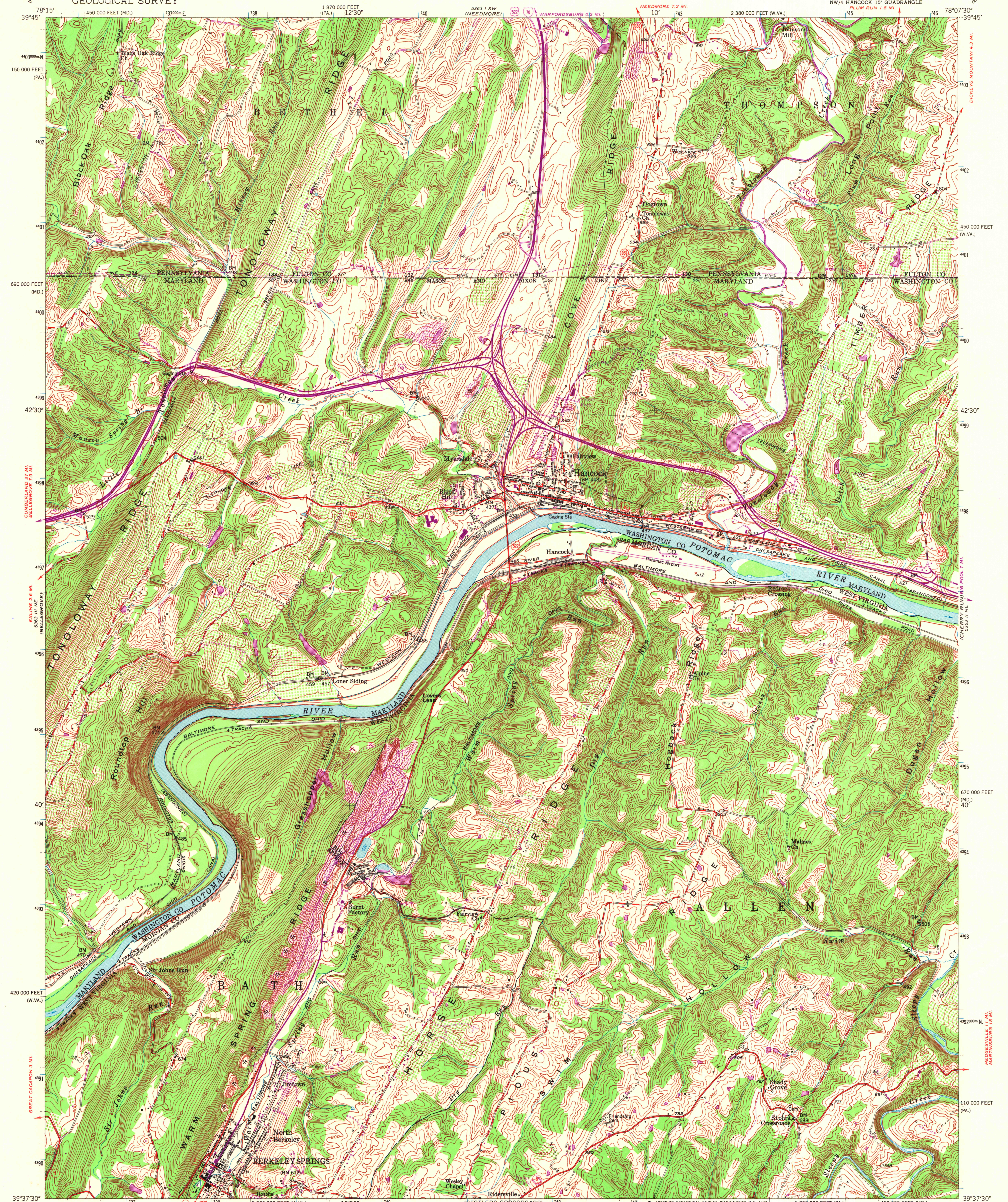


UNITED STATES
DEPARTMENT OF THE INTERIOR
GEOLOGICAL SURVEY

HANCOCK QUADRANGLE
WEST VIRGINIA-MARYLAND-PENNSYLVANIA
7.5 MINUTE SERIES (TOPOGRAPHIC)
NW/4 HANCOCK 15' QUADRANGLE
PLUM RUN 1.8 MI.

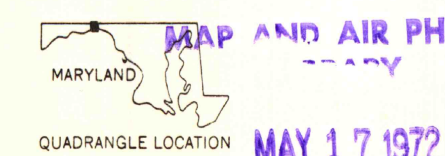
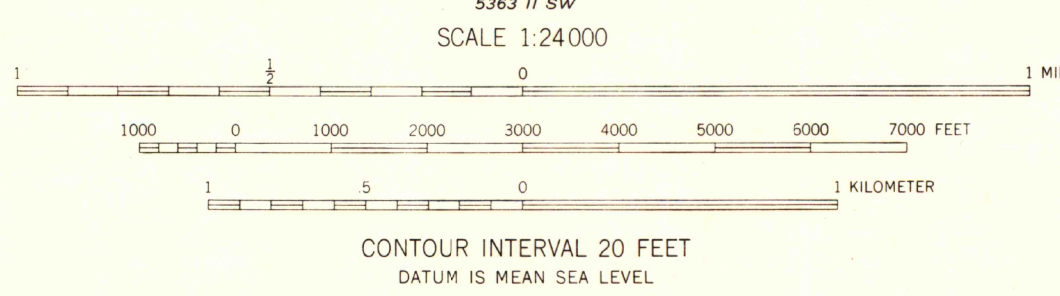
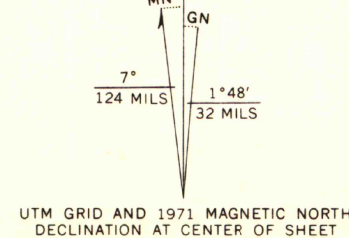


Mapped, edited, and published by the Geological Survey
Control by USGS and USC&GS

Topography from aerial photographs by multiplex methods
Aerial photographs taken 1947. Field check 1951

Polyconic projection. 1927 North American datum
10,000-foot grids based on West Virginia coordinate system,
north zone, Maryland coordinate system, and Pennsylvania
coordinate system, south zone
1000-meter Universal Transverse Mercator grid ticks,
zone 17, shown in blue

Revisions shown in purple compiled from aerial photographs
taken 1971. This information not field checked



ROAD CLASSIFICATION	
Heavy-duty	Light-duty
Medium-duty	Unimproved dirt
Interstate Route	U.S. Route
	State Route

HANCOCK, W. VA.-MD.-PA.
NW/4 HANCOCK 15' QUADRANGLE
N3937.5-W7807.5/7.5

1951
PHOTOREVISED 1971
ANS 5363 II NW-SERIES V854

THIS MAP COMPLIES WITH NATIONAL MAP ACCURACY STANDARDS
FOR SALE BY U.S. GEOLOGICAL SURVEY, WASHINGTON, D.C. 20242
A FOLDER DESCRIBING TOPOGRAPHIC MAPS AND SYMBOLS IS AVAILABLE ON REQUEST