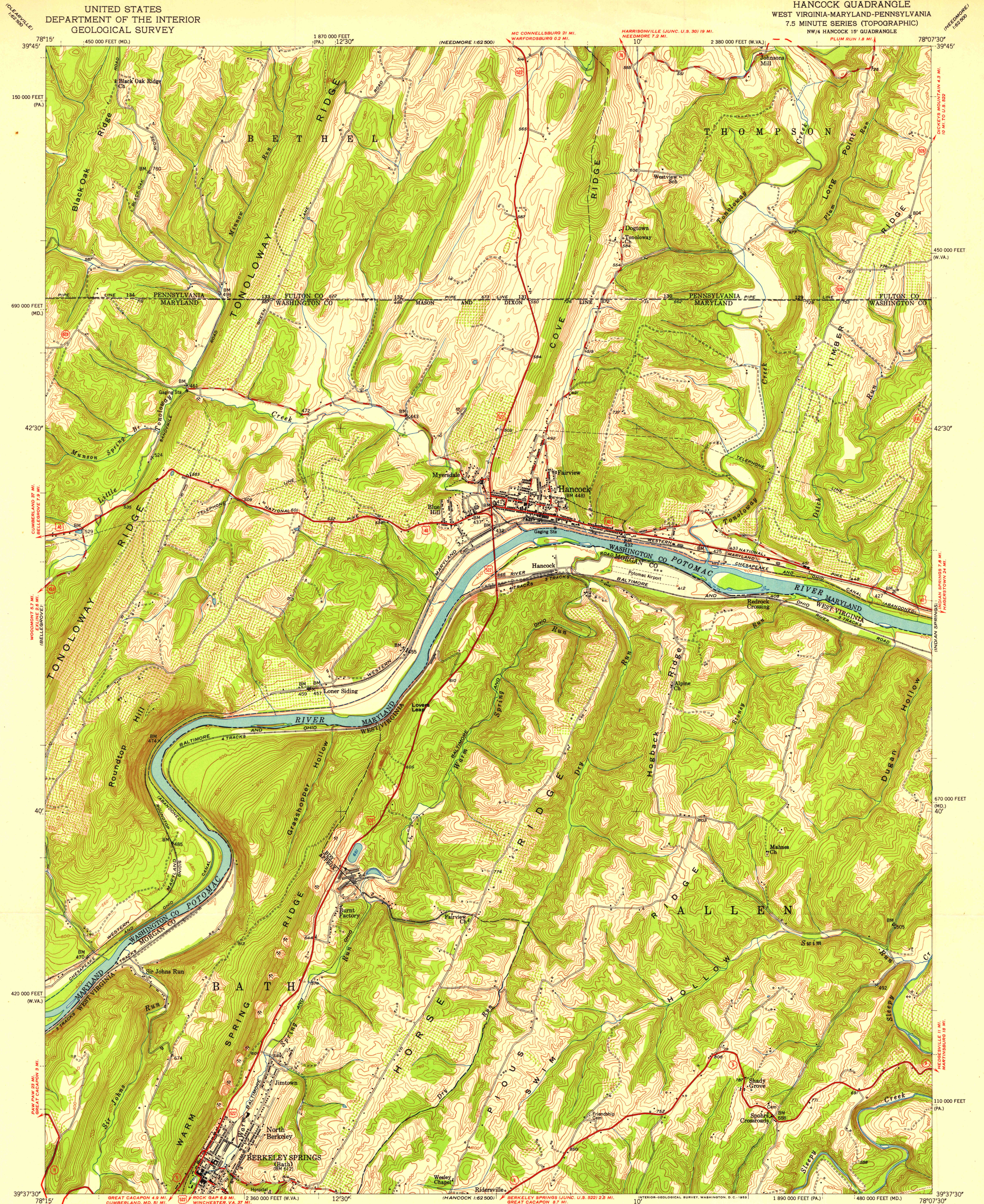


UNITED STATES
DEPARTMENT OF THE INTERIOR
GEOLOGICAL SURVEY

HANCOCK QUADRANGLE
WEST VIRGINIA-MARYLAND-PENNSYLVANIA
7.5 MINUTE SERIES (TOPOGRAPHIC)
NW/4 HANCOCK 15' QUADRANGLE



Mapped, edited, and published by the Geological Survey

Control by USGS and USC&GS

Topography from aerial photographs by multiplex methods
Aerial photographs taken 1947. Field check 1951

Polyconic projection. 1927 North American datum
10,000-foot grids based on West Virginia coordinate system,
north zone, Maryland coordinate system, and Pennsylvania
coordinate system, south zone

SCALE 1:24,000

1 000 0 1000 2000 3000 4000 5000 6000 7000 FEET
1 0 1 2 3 4 5 6 7 8 9 10 KILOMETER

CONTOUR INTERVAL 20 FEET
DATUM IS MEAN SEA LEVEL

ROAD CLASSIFICATION

Heavy-duty 4 LANE 16 LANE Light-duty
Medium-duty 4 LANE 16 LANE Unimproved dirt
U.S. Route State Route



HANCOCK, W. VA.-MD.-PA.
NW/4 HANCOCK 15' QUADRANGLE
N3937.5-W7807.5/7.5

1951

THIS MAP COMPLIES WITH NATIONAL MAP ACCURACY STANDARDS
FOR SALE BY U. S. GEOLOGICAL SURVEY, WASHINGTON 25, D. C.
A FOLDER DESCRIBING TOPOGRAPHIC MAPS AND SYMBOLS IS AVAILABLE ON REQUEST