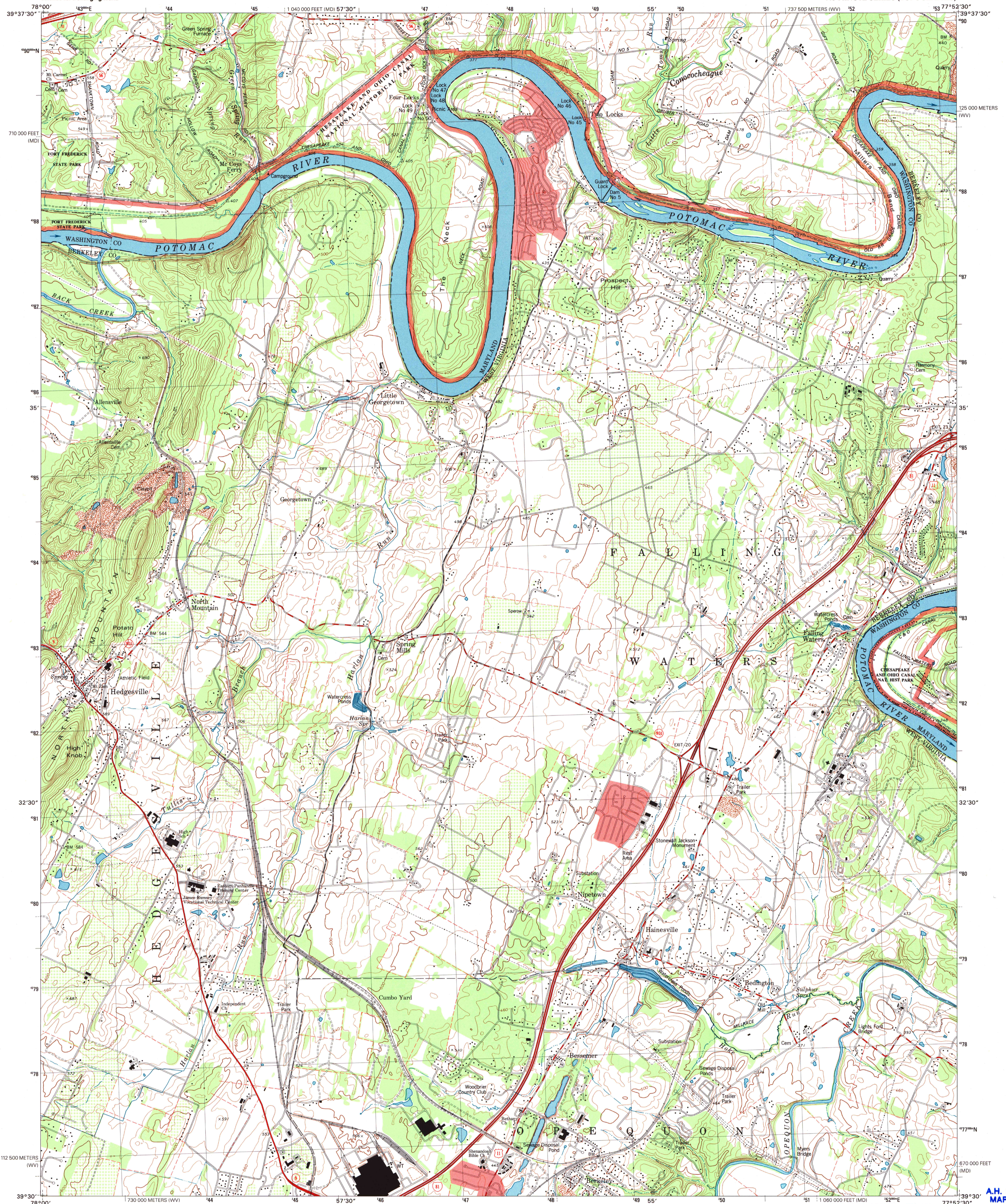




U.S. DEPARTMENT OF THE INTERIOR  
U.S. GEOLOGICAL SURVEY

HEDGESVILLE QUADRANGLE  
WEST VIRGINIA-MARYLAND  
7.5-MINUTE SERIES (TOPOGRAPHIC)



Produced by the United States Geological Survey  
Topography compiled 1974. Planimetry derived from imagery taken 1977 and other sources. Survey control current as of 1974 North American Datum of 1983 (NAD 83). Projection and 1000-meter grid: Universal Transverse Mercator, zone 18 2 500-meter ticks; West Virginia Coordinate System of 1983 (north zone) 10 000-foot ticks; Maryland Coordinate System of 1983 North American Datum of 1927 (NAD 27) is shown by dashed corner ticks. The values of the shift between NAD 83 and NAD 27 for 7.5-minute intersections are obtainable from National Geodetic Survey NADCON software  
There may be private inholdings within the boundaries of the National or State reservations shown on this map  
Landmark buildings verified 1974

SCALE 1:24 000

CONTOUR INTERVAL 20 FEET  
NATIONAL GEODETIC VERTICAL DATUM OF 1929  
TO CONVERT FROM FEET TO METERS, MULTIPLY BY 0.3048

ROAD CLASSIFICATION

Primary highway	Light-duty road, hard or improved surface
Secondary highway	Unimproved road
Hard surface	
Hard surface	

Interstate Route U.S. Route State Route

QUADRANGLE LOCATION

1	2	3	1 Cherry Run
4	5	6	2 Clear Spring
7	8	9	3 Mason and Dean
			4 Big Pool
			5 Williamsport
			6 Tallons Station
			7 Martinsburg
			8 Shepherdstown

HEDGESVILLE, WV-MD  
1997  
NIMA 5463 III SW-SERIES V854

THIS MAP COMPLIES WITH NATIONAL MAP ACCURACY STANDARDS  
FOR SALE BY U.S. GEOLOGICAL SURVEY, P.O. BOX 25886, DENVER, COLORADO 80225  
A FOLDER DESCRIBING TOPOGRAPHIC MAPS AND SYMBOLS IS AVAILABLE ON REQUEST

UTM GRID AND 2000 MAGNETIC NORTH DECLINATION AT CENTER OF SHEET

TOTAL RECOVERED FIBER

A.H. ROBINSON  
MAP LIBRARY  
NOV 28 2000  
University of Wisconsin  
Madison

U.S. Regional  
Depository Copy  
DO NOT DISCARD

ISBN 0-607-92155-2  
9 780607 921552