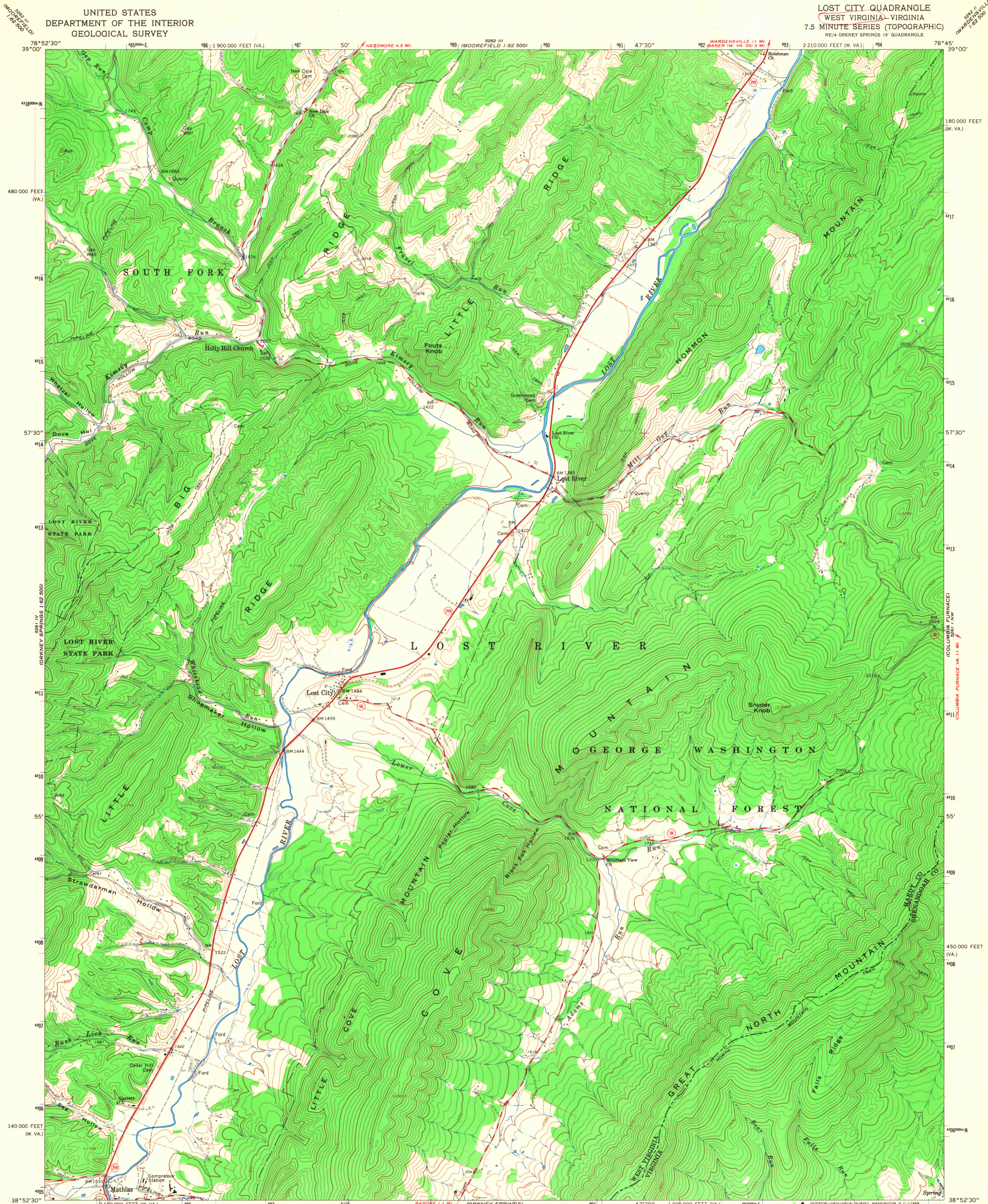
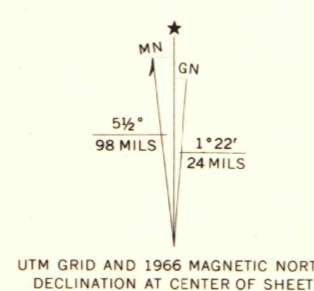


UNITED STATES
DEPARTMENT OF THE INTERIOR
GEOLOGICAL SURVEY

LOST CITY QUADRANGLE
WEST VIRGINIA-VIRGINIA
7.5 MINUTE SERIES (TOPOGRAPHIC)
NE/4 ORKNEY SPRINGS 15' QUADRANGLE



Maped, edited, and published by the Geological Survey
in cooperation with Virginia Division of Mineral Resources
Control by USGS and USC&GS
Topography by photogrammetric methods from aerial photographs
taken 1965. Field checked 1966
Polyconic projection. 1927 North American datum
10,000-foot grids based on West Virginia coordinate system, north zone
and Virginia coordinate system, north zone
1000-meter Universal Transverse Mercator grid ticks,
zone 17, shown in blue
Fine red dashed lines indicate selected fence and field lines where
generally visible on aerial photographs. This information is unchecked



SCALE 1:24,000
CONTOUR INTERVAL 40 FEET
DATUM IS MEAN SEA LEVEL

THIS MAP COMPLIES WITH NATIONAL MAP ACCURACY STANDARDS
FOR SALE BY U.S. GEOLOGICAL SURVEY, WASHINGTON, D.C. 20242
AND VIRGINIA DIVISION OF MINERAL RESOURCES, CHARLOTTESVILLE, VIRGINIA 22903
A FOLDER DESCRIBING TOPOGRAPHIC MAPS AND SYMBOLS IS AVAILABLE ON REQUEST



ROAD CLASSIFICATION
Heavy-duty ——— Light-duty ———
Medium-duty ——— Unimproved dirt ———
State Route ———

LOST CITY, W. VA.-VA.
NE/4 ORKNEY SPRINGS 15' QUADRANGLE
N3852.5-W7845/7.5

1966

AMS 5261 IV NE-SERIES V854

MAP AND AIR PHOTO LIBRARY
University of Wisconsin