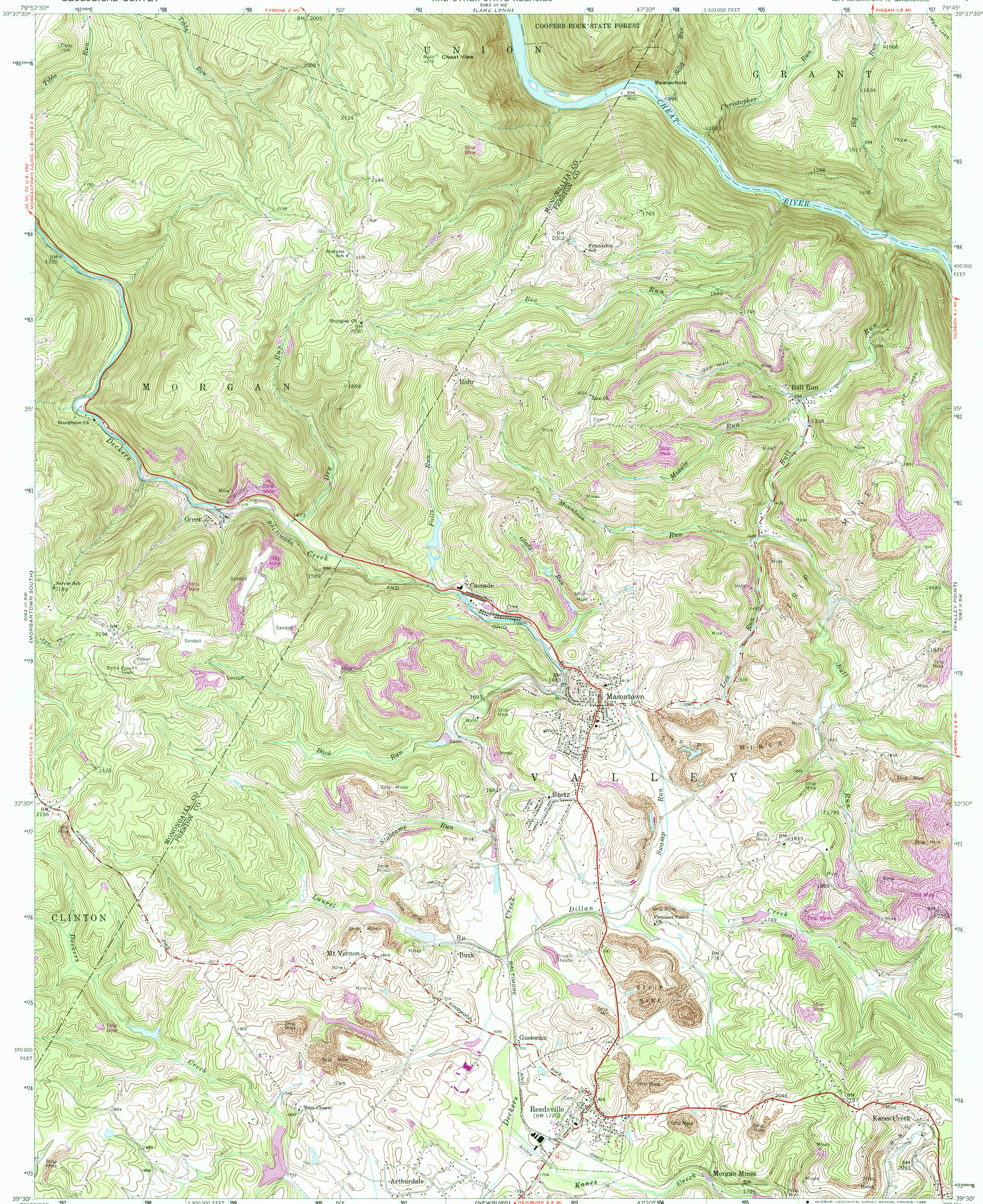


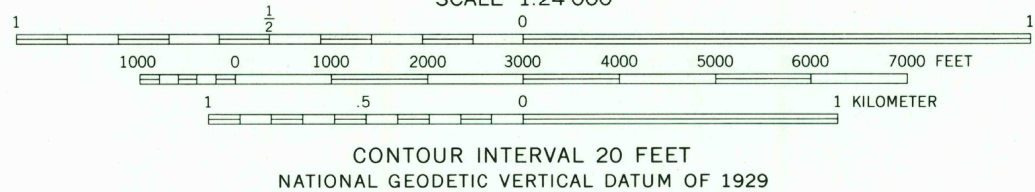
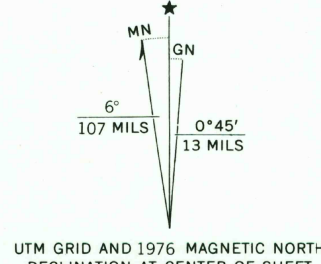
UNITED STATES
DEPARTMENT OF THE INTERIOR
GEOLOGICAL SURVEY

STATE OF WEST VIRGINIA
REPRESENTED BY THE
STATE OF WEST VIRGINIA GEOLOGICAL SURVEY
AND OTHER STATE AGENCIES

MASONTOWN QUADRANGLE
WEST VIRGINIA
7.5 MINUTE SERIES (TOPOGRAPHIC)
SE 1/4 MORGANTOWN 15' QUADRANGLE



Mapped, edited, and published by the Geological Survey
Control by USGS and USC&GS
Topography from aerial photographs by photogrammetric methods
Aerial photographs taken 1956. Field check 1960
Polyconic projection. 1927 North American datum
10,000-foot grid based on West Virginia coordinate system, north zone
1000-meter Universal Transverse Mercator grid ticks,
zone 17, shown in blue
Fine red dashed lines indicate selected fence and field lines where
generally visible on aerial photographs. This information is unchecked
Revisions shown in purple compiled from aerial photographs
taken 1976. This information not field checked



To place on the predicted North American Datum 1983,
move the projection lines 6 meters south and
19 meters west as shown by dashed corner ticks

ROAD CLASSIFICATION
Heavy-duty ——— Light-duty ———
Medium-duty ——— Unimproved dirt ———
○ State Route

MASONTOWN, W. VA.
SE 1/4 MORGANTOWN 15' QUADRANGLE
39079-E7-TF-024
1960
PHOTOREVISED 1976
DMA 5063 III SE—SERIES Y854

USGS NMD HISTORICAL MAP
APR 13 1996
REC'D FILE COPY