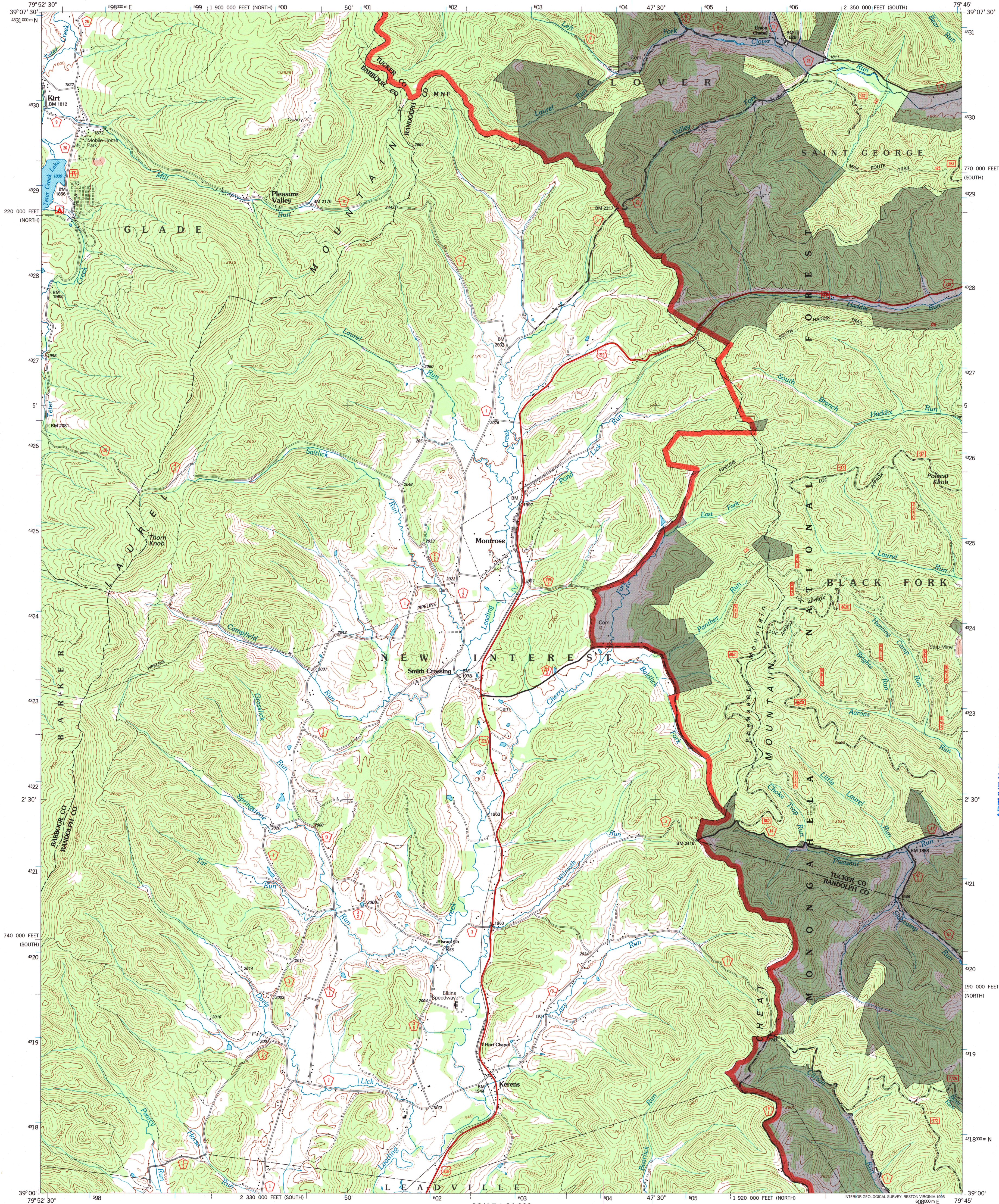


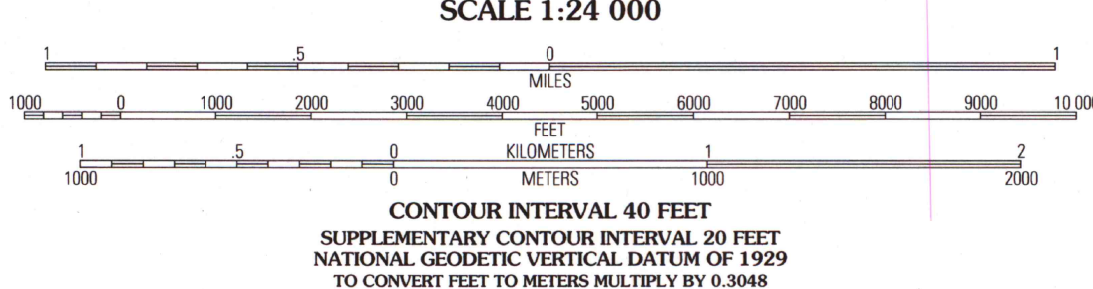
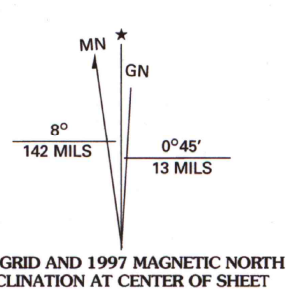
UNITED STATES
DEPARTMENT OF THE INTERIOR
GEOLOGICAL SURVEY

UNITED STATES
DEPARTMENT OF AGRICULTURE
FOREST SERVICE

MONTROSE QUADRANGLE
WEST VIRGINIA
7.5-MINUTE SERIES (TOPOGRAPHIC)



Produced by the U.S. Geological Survey
Revised by the U.S. Forest Service
Areas outside the National Forest System lands may not have been revised
Topography compiled 1964. Planimetry derived from imagery taken 1990
Partial field check by U.S. Forest Service 1995
North American Datum of 1927 (NAD 27). Projection and 10 000-foot ticks:
West Virginia coordinate system, south and north zones (Lambert conformal conic)
Blue 1000-meter Universal Transverse Mercator ticks, zone 17
North American Datum of 1983 (NAD 83) is shown by dashed corner ticks
The values of the shift between NAD 27 and NAD 83 for 7.5-minute
intersections are obtainable from National Geodetic Survey NADCON software
Non-National Forest System lands within the National Forest
Inholdings may exist in other National or State reservations
This map is not a legal land line or ownership document. Public lands are
subject to change and leasing, and may have access restrictions; check
with local offices. Obtain permission before entering private lands



1	2	3
4	5	6
7	8	9

1 Nestorville
2 Colebank
3 Saint George
4 Belington
5 Parsons
6 Junior
7 Elkins
8 Bowden

ADJOINING 7.5' QUADRANGLES

Interstate	U. S.	State	County	National Forest, suitable for passenger cars	National Forest, suitable for high clearance vehicles	National Forest Trail	Primary highway	Secondary highway	Light-duty road	Paved	Gravel	Dirt	Composition unspecified	Unimproved; 4 wheel drive	Trail	Gate
1	2	3	4	5	6	7	8	9	10	11	12	13	14	15	16	17

MONTROSE, WV
1995
DMA 5062 III SE - SERIES V854

THIS MAP COMPLIES WITH NATIONAL MAP ACCURACY STANDARDS
FOR SALE BY U.S. GEOLOGICAL SURVEY, P.O. BOX 25286, DENVER, COLORADO 80225
A FOLDER DESCRIBING TOPOGRAPHIC MAPS AND SYMBOLS IS AVAILABLE ON REQUEST

ARTHUR H. ROBINSON MAP LIBRARY
University of Wisconsin-Madison
U.S. Regional
Depository Copy
MAY 28 1999
DO NOT DISCARD

