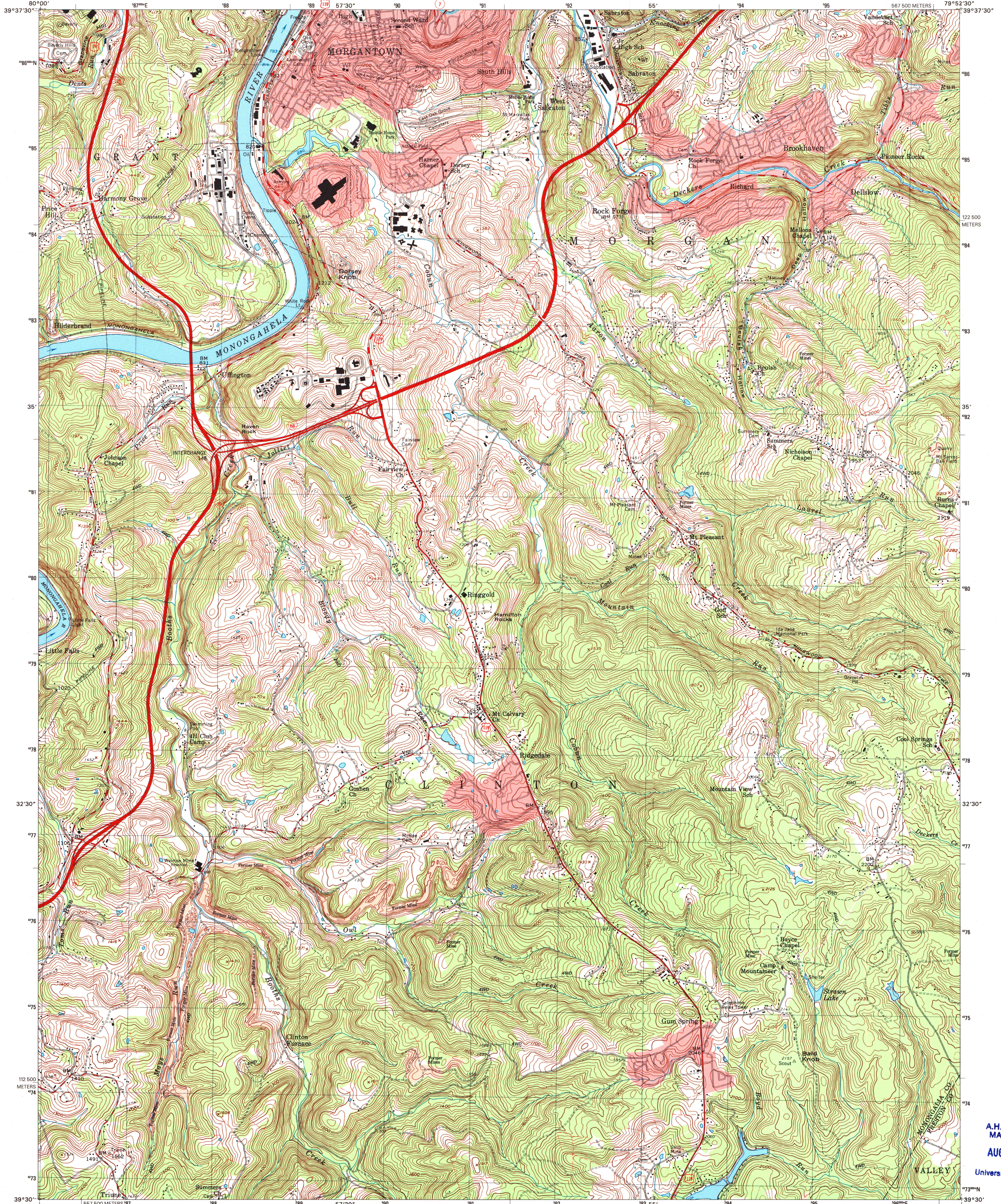


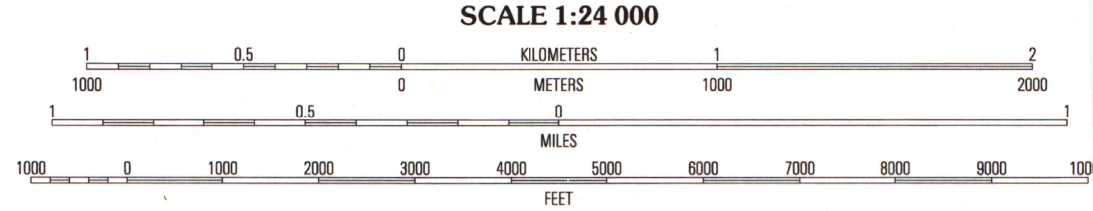
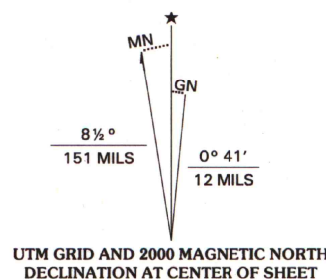


U.S. DEPARTMENT OF THE INTERIOR
U.S. GEOLOGICAL SURVEY

MORGANTOWN SOUTH QUADRANGLE
WEST VIRGINIA
7.5-MINUTE SERIES (TOPOGRAPHIC)



Produced by the United States Geological Survey
Topography compiled 1955. Planimetry derived from imagery taken 1977 and other sources. Survey control current as of 1957
North American Datum of 1983 (NAD 83). Projection and 1000-meter grid: Universal Transverse Mercator, zone 17
2500-meter ticks: West Virginia Coordinate System of 1983 (north zone)
North American Datum of 1927 (NAD 27) is shown by dashed corner ticks. The values of the shift between NAD 83 and NAD 27 for 7.5-minute intersections are obtainable from National Geodetic Survey NADCON software
Landmark buildings verified 1957



CONTOUR INTERVAL 20 FEET
NATIONAL GEODETIC VERTICAL DATUM OF 1929
TO CONVERT FROM FEET TO METERS, MULTIPLY BY 0.3048



ROAD CLASSIFICATION
Primary highway
hard surface
Secondary highway
hard surface
Light-duty road, hard or
improved surface
Unimproved road
Interstate Route
U.S. Route
State Route

1	2	3
4	5	6
7	8	9

MORGANTOWN SOUTH, WV
1997
NIMA 5063 III SW-SERIES V854

A.H. ROBINSON
MAP LIBRARY
AUG 22 2001
University of Wisconsin
Madison

U.S. Regional
Depository Copy
DO NOT DISCARD

