

CAMERON
80°52'30"
39°45'
640 000 FEET (OHIO)
4399000 N
42°30'
40'
420 000 FEET (W. VA.)
39°37'30"

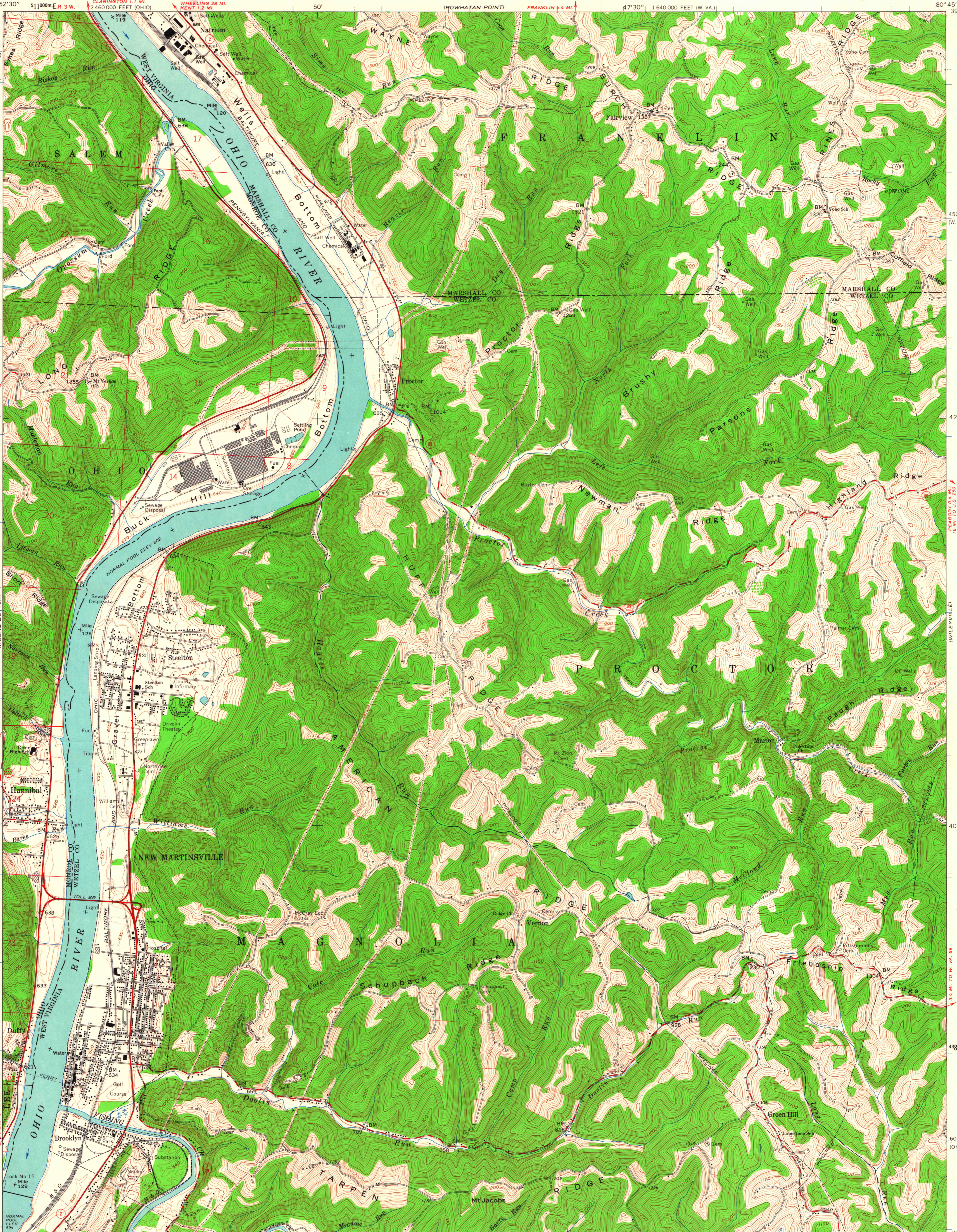
UNITED STATES
DEPARTMENT OF THE INTERIOR
GEOLOGICAL SURVEY

STATE OF WEST VIRGINIA
REPRESENTED BY THE
STATE OF WEST VIRGINIA GEOLOGICAL SURVEY
AND OTHER STATE AGENCIES

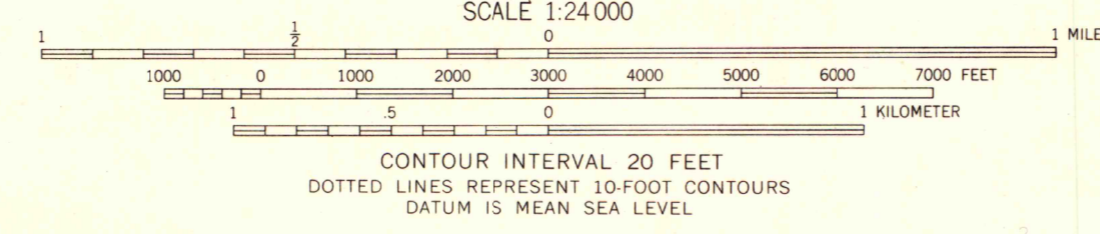
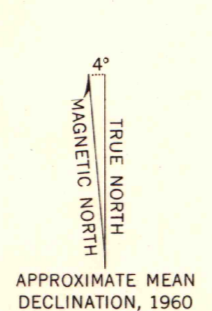
STATE OF OHIO
DEPARTMENT OF HIGHWAYS
DEPARTMENT OF NATURAL RESOURCES
DIVISION OF GEOLOGICAL SURVEY

NEW MARTINSVILLE QUADRANGLE
WEST VIRGINIA—OHIO
7.5 MINUTE SERIES (TOPOGRAPHIC)
NE 4 NEW MARTINSVILLE 15 QUADRANGLE

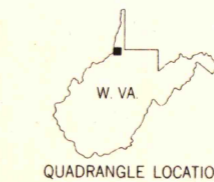
(GLEN EASTON)
450 000 FEET (W. VA.)
42°30'
40'
4388000 N
500 000 FEET (OHIO)
39°37'30"



Mapped, edited, and published by the Geological Survey
Control by USGS, USC&GS, and USCE
Topography by photogrammetric methods from aerial
photographs taken 1956. Field checked 1960
Polyconic projection. 1927 North American datum
10,000-foot grids based on West Virginia coordinate system,
north zone, and Ohio coordinate system, south zone
1000-meter Universal Transverse Mercator grid ticks,
zone 17, shown in blue
Fine red dashed lines indicate selected fence and field lines where
generally visible on aerial photographs. This information is unchecked
The state boundary as shown represents the approximate position of the
low water line as determined from U. S. Corps of Engineers Ohio
River charts, surveyed 1913, and supplementary information
Ohio area lies within the Old Seven Ranges
Land lines based on the Ohio River Base



CONTOUR INTERVAL 20 FEET
DOTTED LINES REPRESENT 10-FOOT CONTOURS
DATUM IS MEAN SEA LEVEL



ROAD CLASSIFICATION

Heavy-duty	Light-duty
Medium-duty	Unimproved dirt
State Route	

NEW MARTINSVILLE, W. VA.—OHIO
NE 4 NEW MARTINSVILLE 15 QUADRANGLE
N3937.5—W8045.77.5
1960

THIS MAP COMPLIES WITH NATIONAL MAP ACCURACY STANDARDS
FOR SALE BY U. S. GEOLOGICAL SURVEY, WASHINGTON 25, D. C.
A FOLDER DESCRIBING TOPOGRAPHIC MAPS AND SYMBOLS IS AVAILABLE ON REQUEST

MAP AND AIR PHOTO LIBRARY
University of Wisconsin