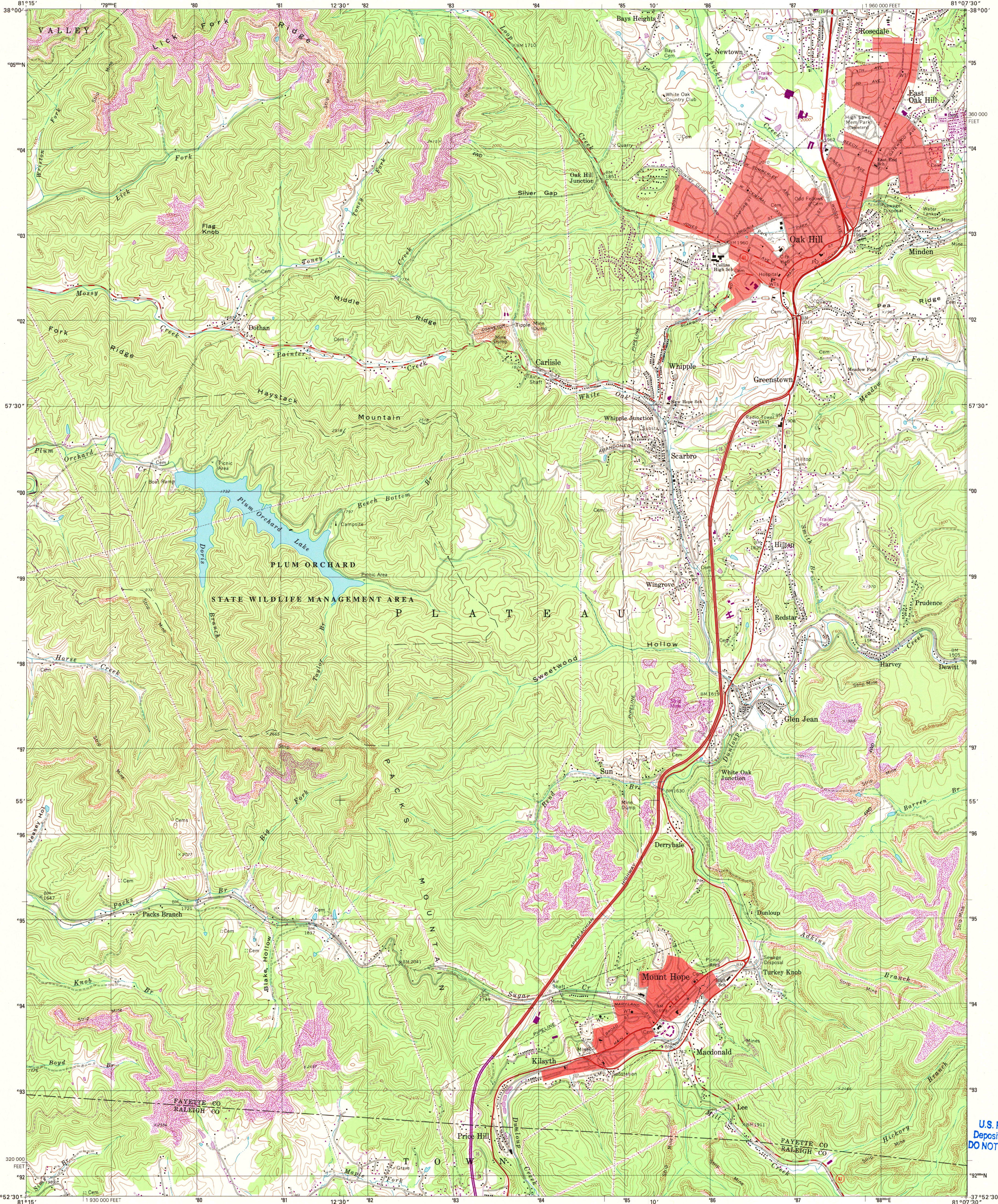




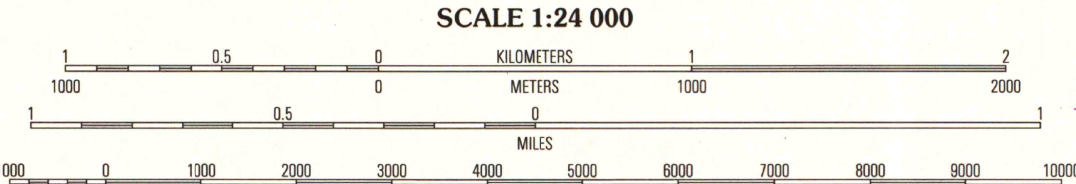
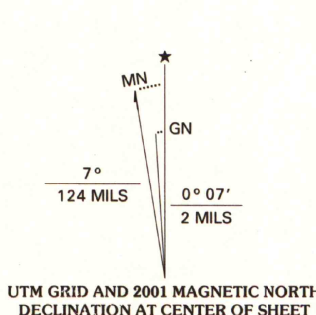
U.S. DEPARTMENT OF THE INTERIOR  
U.S. GEOLOGICAL SURVEY

STATE OF WEST VIRGINIA  
REPRESENTED BY THE  
STATE OF WEST VIRGINIA GEOLOGICAL AND ECONOMIC SURVEY  
AND OTHER STATE AGENCIES

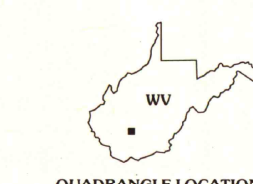
OAK HILL QUADRANGLE  
WEST VIRGINIA  
7.5-MINUTE SERIES (TOPOGRAPHIC)



Produced by the United States Geological Survey  
Topography compiled 1969. Planimetry derived from imagery taken 1986 and other sources. Photoinspected using imagery dated 1997; no major culture or drainage changes observed. Survey control current as of 1969. Boundaries, other than corporate, verified 2001  
North American Datum of 1927 (NAD 27). Projection and 10 000-foot ticks: West Virginia coordinate system, south zone (Lambert conformal conic)  
1000-meter Universal Transverse Mercator grid, zone 17  
North American Datum of 1983 (NAD 83) is shown by dashed corner ticks. The values of the shift between NAD 27 and NAD 83 for 7.5-minute intersections are obtainable from National Geodetic Survey NADCON software  
There may be private inholdings within the boundaries of the National or State reservations shown on this map  
Information shown in purple may not meet USGS content standards and may conflict with previously mapped contours



CONTOUR INTERVAL 40 FEET  
NATIONAL GEODETIC VERTICAL DATUM OF 1929  
TO CONVERT FROM FEET TO METERS, MULTIPLY BY 0.3048  
THIS MAP COMPLIES WITH NATIONAL MAP ACCURACY STANDARDS  
FOR SALE BY U.S. GEOLOGICAL SURVEY, P.O. BOX 25286, DENVER, COLORADO 80225  
A FOLDER DESCRIBING TOPOGRAPHIC MAPS AND SYMBOLS IS AVAILABLE ON REQUEST



QUADRANGLE LOCATION

ROAD CLASSIFICATION  
Primary highway  
hard surface .....  
Secondary highway  
hard surface .....  
Light-duty road, hard or  
improved surface .....  
Unimproved road .....  
Interstate Route  
U.S. Route  
State Route

1	2	3
4	5	6
7	8	9

A.H. ROBINSON  
MAP LIBRARY  
SEP 11 2001  
University of Wisconsin  
Madison

OAK HILL, WV  
1997  
NIMA 4759 1 NW-SERIES V854

U.S. Regional  
Depository Copy  
DO NOT DISCARD

