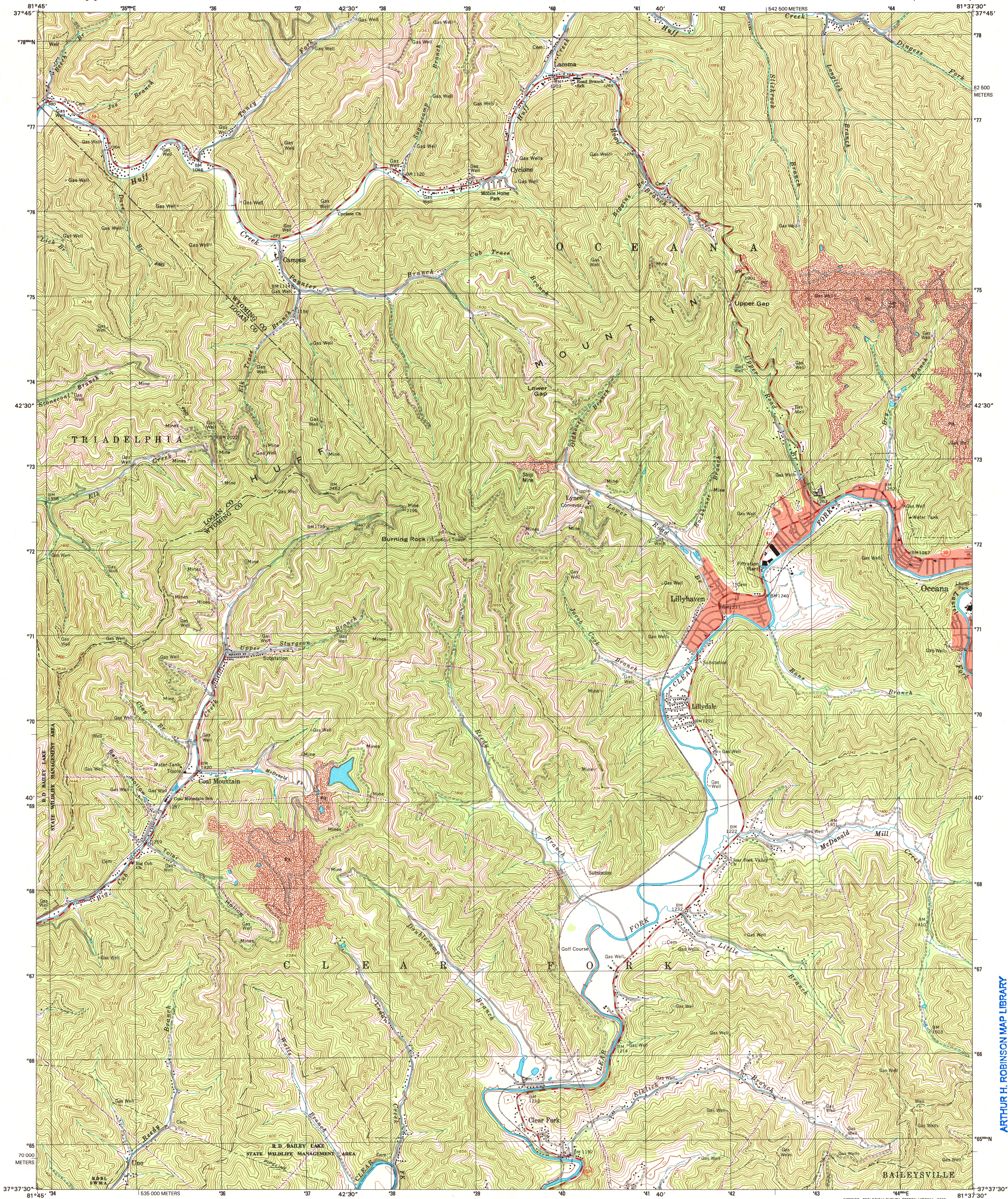


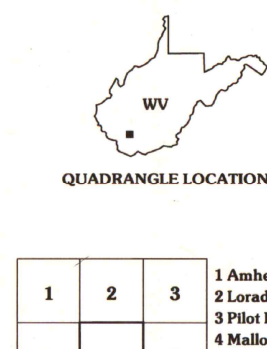
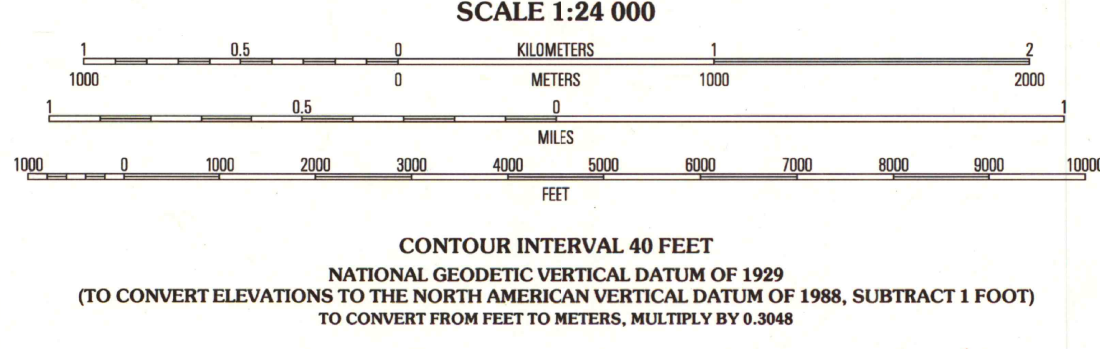
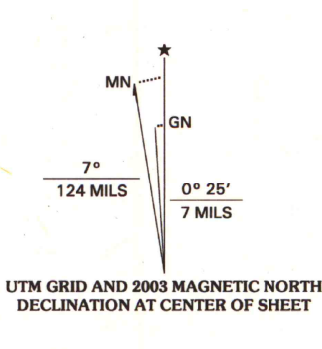


U.S. DEPARTMENT OF THE INTERIOR
U.S. GEOLOGICAL SURVEY

OCEANA QUADRANGLE
WEST VIRGINIA
7.5-MINUTE SERIES (TOPOGRAPHIC)



Produced by the United States Geological Survey
Topography compiled 1996. Planimetry derived from imagery
taken 1996 and other sources. Survey control current as of 1968
Boundaries current as of 2002
North American Datum of 1983 (NAD 83). Projection and
1 000-meter grid: Universal Transverse Mercator, zone 17
2 500-meter ticks: West Virginia Coordinate System of 1983
(south zone)
North American Datum of 1927 (NAD 27) is shown by dashed
corner ticks. The values of the shift between NAD 83 and
NAD 27 for 7.5-minute intersections are obtainable from
National Geodetic Survey NADCON software
There may be private inholdings within the boundaries of the
National or State reservations shown on this map
Houses of worship, schools, and other labeled buildings verified 1968



ROAD CLASSIFICATION
Primary highway
hard surface
Secondary highway
hard surface
Light-duty road, hard or
improved surface
Unimproved road
Interstate Route
U.S. Route
State Route

1	2	3
4	5	6
7	8	9

U.S. Regional
Depository Copy
DO NOT DISCARD

OCEANA, WV
1996

NIMA 4659 II NW-SERIES V854

ARTHUR H. ROBINSON MAP LIBRARY
University of Wisconsin-Madison

JUL 1 2004

