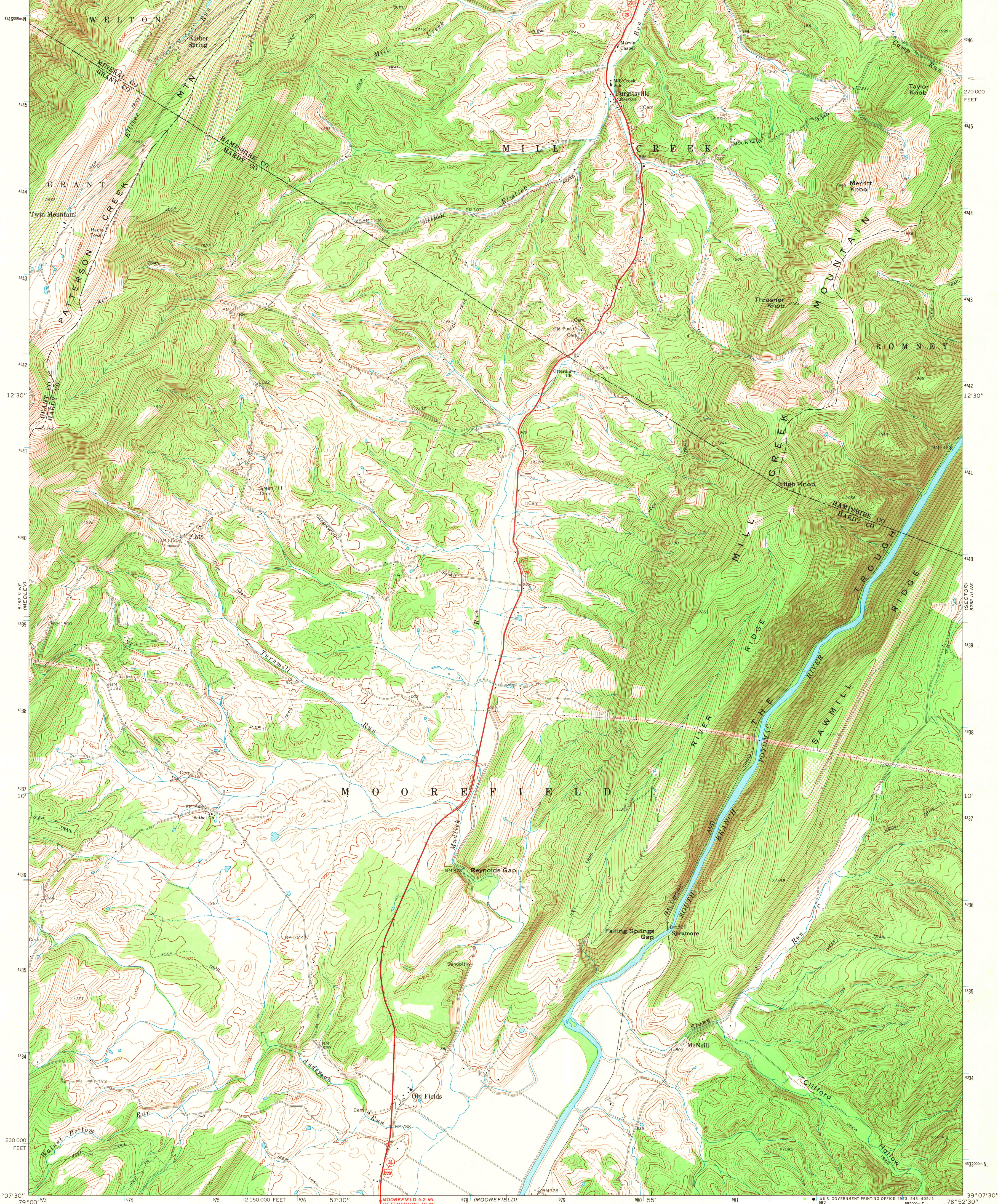
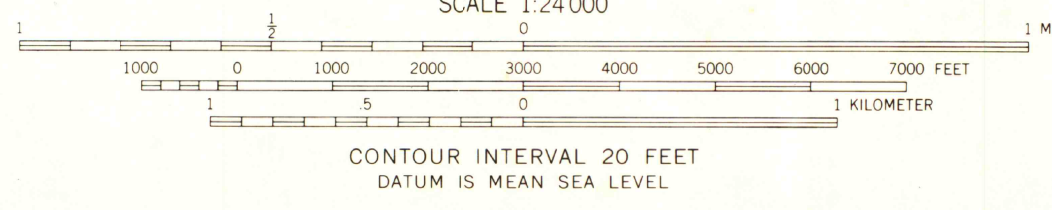
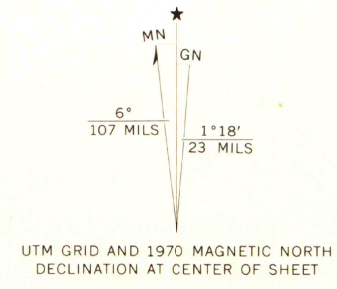


79°00' 79°05' 79°10' 79°15' 79°20' 79°25' 79°30' 79°35' 79°40' 79°45' 79°50' 79°55' 80°00' 80°05' 80°10' 80°15' 80°20' 80°25' 80°30' 80°35' 80°40' 80°45' 80°50' 80°55' 81°00' 81°05' 81°10' 81°15' 81°20' 81°25' 81°30' 81°35' 81°40' 81°45' 81°50' 81°55' 82°00'



Mapped, edited, and published by the Geological Survey  
Control by USGS and USC&GS  
Topography by photogrammetric methods from aerial  
photographs taken 1966. Field checked 1970  
Projection and 10,000-foot grid ticks: West Virginia coordinate  
system, north zone (Lambert conformal conic)  
1000-meter Universal Transverse Mercator grid ticks,  
zone 17, shown in blue. 1927 North American datum  
Fine red dashed lines indicate selected fence and field lines where  
generally visible on aerial photographs. This information is unchecked



| ROAD CLASSIFICATION             |   |
|---------------------------------|---|
| Primary highway, hard surface   | Light-duty road, hard or improved surface |
| Secondary highway, hard surface | Unimproved road                           |
| Interstate Route                | U. S. Route                               |
|                                 | State Route                               |



DEC 17 1973

OLD FIELDS, W. VA.  
NW/4 MOOREFIELD 15' QUADRANGLE  
N3907.5—W7852.5/7.5

THIS MAP COMPLIES WITH NATIONAL MAP ACCURACY STANDARDS  
FOR SALE BY U. S. GEOLOGICAL SURVEY, WASHINGTON, D. C. 20242  
A FOLDER DESCRIBING TOPOGRAPHIC MAPS AND SYMBOLS IS AVAILABLE ON REQUEST

1970  
AMS 5262 III NW—SERIES V854