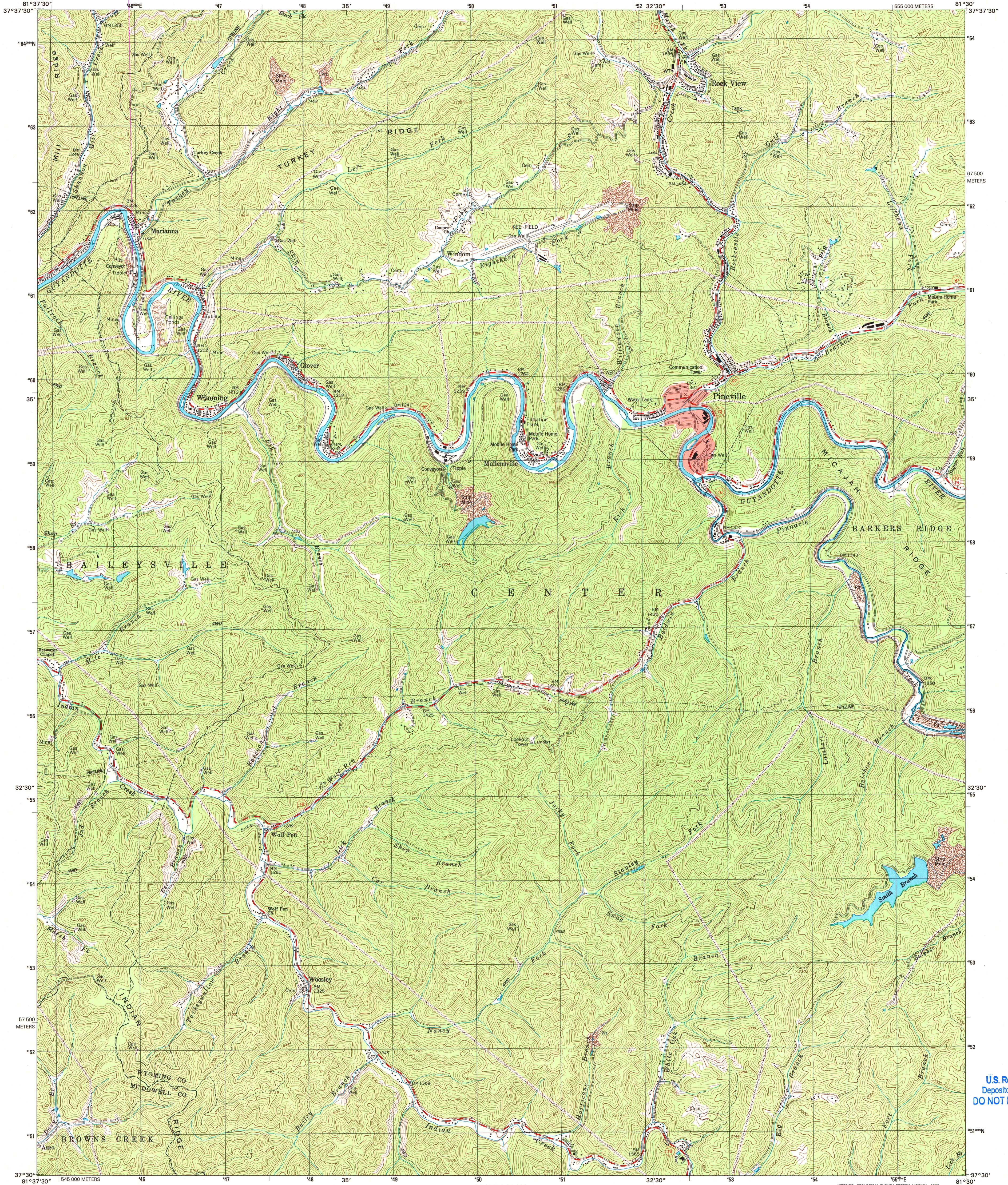




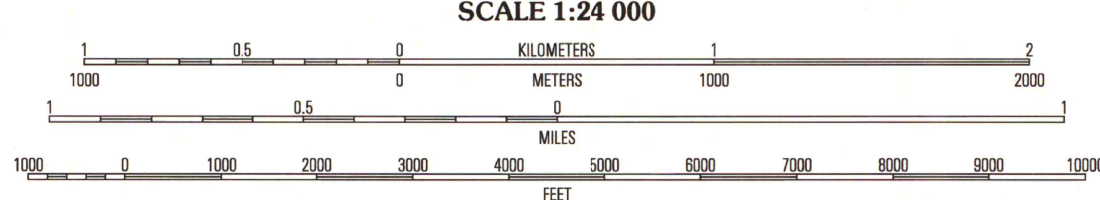
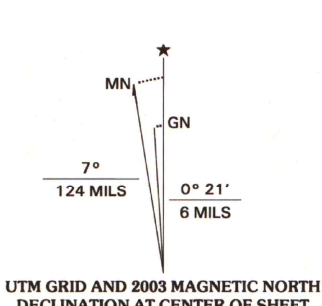
U.S. DEPARTMENT OF THE INTERIOR
U.S. GEOLOGICAL SURVEY

PINEVILLE QUADRANGLE
WEST VIRGINIA
7.5-MINUTE SERIES (TOPOGRAPHIC)



U.S. Regional
Depository Copy
DO NOT DISCARD

Produced by the United States Geological Survey
Topography compiled 1996. Planimetry derived from imagery
taken 1996 and other sources. Survey control current as of 1967
Boundaries current as of 2002
North American Datum of 1983 (NAD 83). Projection and
1 000-meter grid: Universal Transverse Mercator, zone 17
2 500-meter ticks: West Virginia Coordinate System of 1983
(south zone)
North American Datum of 1927 (NAD 27) is shown by dashed
corner ticks. The values of the shift between NAD 83 and
NAD 27 for 7.5-minute intersections are obtainable from
National Geodetic Survey NADCON software
Houses of worship, schools, and other labeled buildings verified 1967



CONTOUR INTERVAL 40 FEET
NATIONAL GEODETIC VERTICAL DATUM OF 1929
TO CONVERT FROM FEET TO METERS, MULTIPLY BY 0.3048



ROAD CLASSIFICATION
Primary highway
hard surface
Secondary highway
hard surface
Light-duty road, hard or
improved surface
Unimproved road
Interstate Route
U.S. Route
State Route

| | | | |
|---|---|---|---------------|
| 1 | 2 | 3 | 1 Ocean |
| 4 | 5 | 6 | 2 Matheny |
| 7 | 8 | 9 | 3 McGraw |
| | | | 4 Baileyville |
| | | | 5 Mullens |
| | | | 6 Day |
| | | | 7 Welch |
| | | | 8 Keystone |

ARTHUR H. ROBINSON MAP LIBRARY
University of Wisconsin-Madison

PINEVILLE, WV
1996

NIMA 4659 II SE-SERIES V854

THIS MAP COMPLIES WITH NATIONAL MAP ACCURACY STANDARDS
FOR SALE BY U.S. GEOLOGICAL SURVEY, P.O. BOX 25286, DENVER, COLORADO 80225
A FOLDER DESCRIBING TOPOGRAPHIC MAPS AND SYMBOLS IS AVAILABLE ON REQUEST

